

STX5 / Syntaxin 5 Antibody (aa51-307)
Rabbit Polyclonal Antibody
Catalog # ALS16906**Specification**

STX5 / Syntaxin 5 Antibody (aa51-307) - Product Information

Application	IHC, ICC, WB
Primary Accession	Q13190
Other Accession	6811
Reactivity	Human, Rat
Host	Rabbit
Clonality	Polyclonal
Isotype	IgG
Calculated MW	39673

STX5 / Syntaxin 5 Antibody (aa51-307) - Additional Information**Gene ID** 6811**Other Names**

STX5, SED5, STX5A, Syntaxin 5A, Syntaxin-5, Syntaxin 5

Target/Specificity

Human STX5 / Syntaxin 5

Reconstitution & Storage

0.1 M Tris-glycine, pH 7.0, 20% glycerol, 0.01% Thimerosal. Keep as concentrated solution. Aliquot and store at -20°C or below. Avoid multiple freeze-thaw cycles.

Precautions

STX5 / Syntaxin 5 Antibody (aa51-307) is for research use only and not for use in diagnostic or therapeutic procedures.

STX5 / Syntaxin 5 Antibody (aa51-307) - Protein Information**Name** STX5**Synonyms** STX5A**Function**

Mediates endoplasmic reticulum to Golgi transport. Together with p115/USO1 and GM130/GOLGA2, involved in vesicle tethering and fusion at the cis-Golgi membrane to maintain the stacked and inter- connected structure of the Golgi apparatus.

Cellular Location

Endoplasmic reticulum-Golgi intermediate compartment membrane {ECO:0000250|UniProtKB:Q08851}; Single-pass type IV membrane protein. Golgi apparatus membrane. Note=Localizes throughout the Golgi apparatus, but most abundant in the cis-most

cisternae

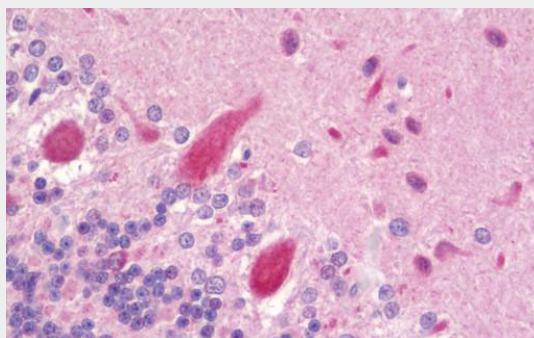
Volume
50 μ l

STX5 / Syntaxin 5 Antibody (aa51-307) - Protocols

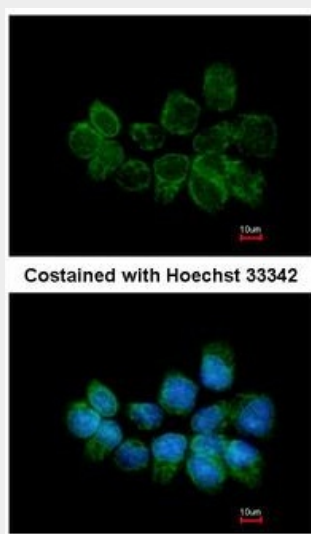
Provided below are standard protocols that you may find useful for product applications.

- [Western Blot](#)
- [Blocking Peptides](#)
- [Dot Blot](#)
- [Immunohistochemistry](#)
- [Immunofluorescence](#)
- [Immunoprecipitation](#)
- [Flow Cytometry](#)
- [Cell Culture](#)

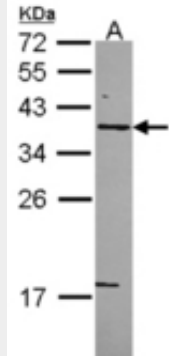
STX5 / Syntaxin 5 Antibody (aa51-307) - Images



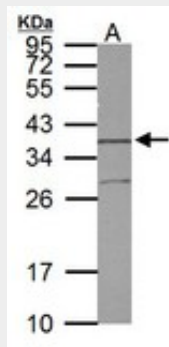
Anti-STX5 / Syntaxin 5 antibody IHC staining of human brain, cerebellum.



Immunofluorescence of methanol-fixed A431 using Syntaxin 5 antibody at 1:200 dilution.



Sample (30 ug of whole cell lysate).



Sample (30 ug of whole cell lysate).

STX5 / Syntaxin 5 Antibody (aa51-307) - Background

Mediates endoplasmic reticulum to Golgi transport.

STX5 / Syntaxin 5 Antibody (aa51-307) - References

- Ravichandran V., et al. J. Mol. Neurosci. 8:159-161(1997).
Bechtel S., et al. BMC Genomics 8:399-399(2007).
Ota T., et al. Nat. Genet. 36:40-45(2004).
Kalnine N., et al. Submitted (OCT-2004) to the EMBL/GenBank/DDBJ databases.
Taylor T.D., et al. Nature 440:497-500(2006).