

HSPA6 Antibody (aa377-628)
Rabbit Polyclonal Antibody
Catalog # ALS16902**Specification**

HSPA6 Antibody (aa377-628) - Product Information

Application	IHC, ICC, WB
Primary Accession	P17066
Other Accession	3310
Reactivity	Human
Host	Rabbit
Clonality	Polyclonal
Isotype	IgG
Calculated MW	71028

HSPA6 Antibody (aa377-628) - Additional Information**Gene ID** 3310**Other Names**

HSPA6, Heat shock 70 kd protein b, Heat shock 70 kDa protein 6, Heat shock 70 kDa protein B, Heat shock 70 kd protein 7, HSP70B

Target/Specificity

Human HSPA6

Reconstitution & Storage

0.1 M Tris-glycine, pH 7.0, 10% glycerol, 0.01% Thimerosal. Keep as concentrated solution. Aliquot and store at -20°C or below. Avoid multiple freeze-thaw cycles.

Precautions

HSPA6 Antibody (aa377-628) is for research use only and not for use in diagnostic or therapeutic procedures.

HSPA6 Antibody (aa377-628) - Protein Information**Name** HSPA6**Synonyms** HSP70B'**Function**

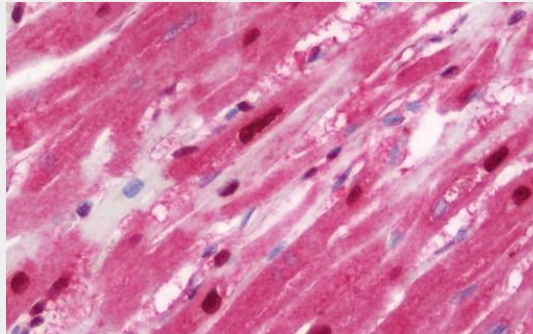
Molecular chaperone implicated in a wide variety of cellular processes, including protection of the proteome from stress, folding and transport of newly synthesized polypeptides, activation of proteolysis of misfolded proteins and the formation and dissociation of protein complexes. Plays a pivotal role in the protein quality control system, ensuring the correct folding of proteins, the re-folding of misfolded proteins and controlling the targeting of proteins for subsequent degradation. This is achieved through cycles of ATP binding, ATP hydrolysis and ADP release, mediated by co-chaperones. The affinity for polypeptides is regulated by its nucleotide bound

state. In the ATP-bound form, it has a low affinity for substrate proteins. However, upon hydrolysis of the ATP to ADP, it undergoes a conformational change that increases its affinity for substrate proteins. It goes through repeated cycles of ATP hydrolysis and nucleotide exchange, which permits cycles of substrate binding and release (PubMed:26865365).

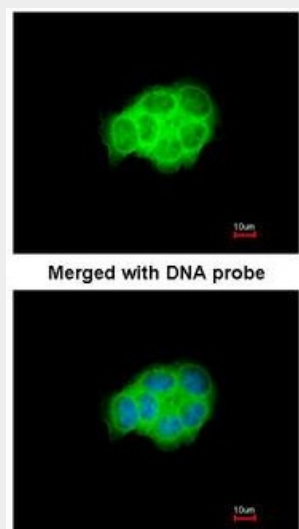
Volume50 μ l**HSPA6 Antibody (aa377-628) - Protocols**

Provided below are standard protocols that you may find useful for product applications.

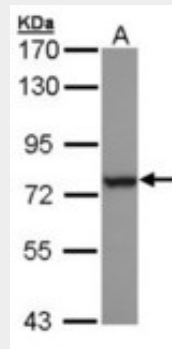
- [Western Blot](#)
- [Blocking Peptides](#)
- [Dot Blot](#)
- [Immunohistochemistry](#)
- [Immunofluorescence](#)
- [Immunoprecipitation](#)
- [Flow Cytometry](#)
- [Cell Culture](#)

HSPA6 Antibody (aa377-628) - Images

Anti-HSPA6 antibody IHC staining of human heart.



Immunofluorescence of paraformaldehyde-fixed A431 using HSPA6 antibody at 1:200 dilution.



Sample (30 ug of whole cell lysate). A: H1299. 7.5% SDS PAGE. HSPA6 antibody diluted at 1:1000

HSPA6 Antibody (aa377-628) - Background

In cooperation with other chaperones, Hsp70s stabilize preexistent proteins against aggregation and mediate the folding of newly translated polypeptides in the cytosol as well as within organelles. These chaperones participate in all these processes through their ability to recognize nonnative conformations of other proteins. They bind extended peptide segments with a net hydrophobic character exposed by polypeptides during translation and membrane translocation, or following stress-induced damage (By similarity).

HSPA6 Antibody (aa377-628) - References

- Leung T.K.C., et al. *Biochem. J.* 267:125-132(1990).
- Gregory S.G., et al. *Nature* 441:315-321(2006).
- Leung T.K.C., et al. *Genomics* 12:74-79(1992).
- Schiller P., et al. *J. Mol. Biol.* 203:97-105(1988).
- Jakobsson M.E., et al. *J. Biol. Chem.* 288:27752-27763(2013).