

PSPH Antibody (aa1-175)
Rabbit Polyclonal Antibody
Catalog # ALS16887

Specification

PSPH Antibody (aa1-175) - Product Information

Application	IHC, ICC, WB
Primary Accession	P78330
Other Accession	5723
Reactivity	Human
Host	Rabbit
Clonality	Polyclonal
Isotype	IgG
Calculated MW	25008

PSPH Antibody (aa1-175) - Additional Information

Gene ID 5723

Other Names

PSPH, L-3-phosphoserine phosphatase, Phosphoserine phosphatase, PSPase, PSP, PSPHD

Target/Specificity

Human PSPH

Reconstitution & Storage

0.1 M Tris-glycine, pH 7.0, 10% glycerol, 0.01% Thimerosal. Keep as concentrated solution. Aliquot and store at -20°C or below. Avoid multiple freeze-thaw cycles.

Precautions

PSPH Antibody (aa1-175) is for research use only and not for use in diagnostic or therapeutic procedures.

PSPH Antibody (aa1-175) - Protein Information

Name PSPH ([HGNC:9577](#))

Function

Catalyzes the last irreversible step in the biosynthesis of L-serine from carbohydrates, the dephosphorylation of O-phospho-L-serine to L-serine (PubMed: [12213811](http://www.uniprot.org/citations/12213811), PubMed: [14673469](http://www.uniprot.org/citations/14673469), PubMed: [15291819](http://www.uniprot.org/citations/15291819), PubMed: [25080166](http://www.uniprot.org/citations/25080166), PubMed: [9222972](http://www.uniprot.org/citations/9222972)). L-serine can then be used in protein synthesis, to produce other amino acids, in nucleotide metabolism or in glutathione synthesis, or can be racemized to D-serine, a neuromodulator (PubMed: [14673469](http://www.uniprot.org/citations/14673469)). May also act

on O-phospho-D-serine (Probable).

Cellular Location

Cytoplasm, cytosol.

Volume

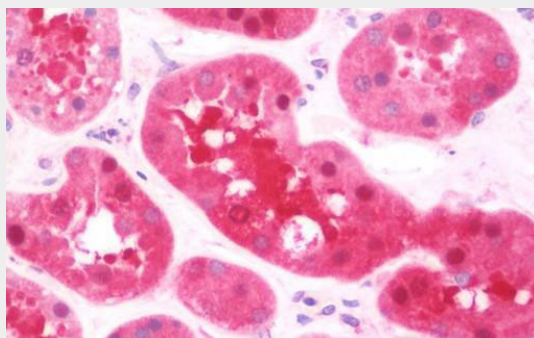
50 μ l

PSPH Antibody (aa1-175) - Protocols

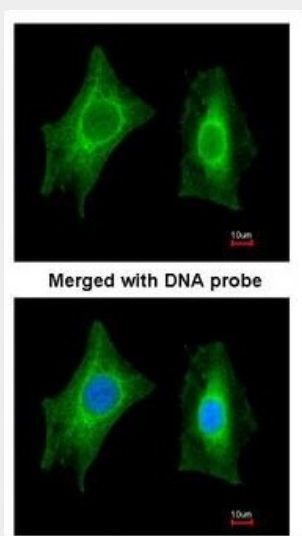
Provided below are standard protocols that you may find useful for product applications.

- [Western Blot](#)
- [Blocking Peptides](#)
- [Dot Blot](#)
- [Immunohistochemistry](#)
- [Immunofluorescence](#)
- [Immunoprecipitation](#)
- [Flow Cytometry](#)
- [Cell Culture](#)

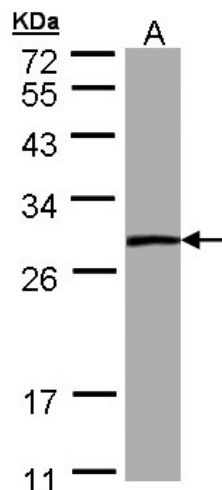
PSPH Antibody (aa1-175) - Images



Anti-PSPH / PSP antibody IHC staining of human kidney.



Immunofluorescence of paraformaldehyde-fixed HeLa using PSPH antibody at 1:200 dilution.



Sample (30 ug of whole cell lysate). A: A431. 12% SDS PAGE. PSPH antibody diluted at 1:1000

PSPH Antibody (aa1-175) - Background

Catalyzes the last step in the biosynthesis of serine from carbohydrates. The reaction mechanism proceeds via the formation of a phosphoryl-enzyme intermediates.

PSPH Antibody (aa1-175) - References

- Collet J.-F.,et al.FEBS Lett. 408:281-284(1997).
- Ota T.,et al.Nat. Genet. 36:40-45(2004).
- Bechtel S.,et al.BMC Genomics 8:399-399(2007).
- Mural R.J.,et al.Submitted (JUL-2005) to the EMBL/GenBank/DDBJ databases.
- Gauci S.,et al.Anal. Chem. 81:4493-4501(2009).