

MAPK4 / ERK4 Antibody (aa1-326)
Rabbit Polyclonal Antibody
Catalog # ALS16883

Specification

MAPK4 / ERK4 Antibody (aa1-326) - Product Information

Application	IHC, ICC, WB
Primary Accession	P31152
Other Accession	5596
Reactivity	Human
Host	Rabbit
Clonality	Polyclonal
Isotype	IgG
Calculated MW	65922

MAPK4 / ERK4 Antibody (aa1-326) - Additional Information

Gene ID 5596

Other Names

MAPK4, ERK-4, Erk3-related, Erk4, MAP kinase isoform p63, PRKM4, RMNK2, MAP kinase 4, ERK3, MAPK 4, p63-MAPK, p63MAPK

Target/Specificity

Human MAPK4 / ERK4

Reconstitution & Storage

0.1 M Tris-glycine, pH 7.0, 10% glycerol, 0.01% Thimerosal. Keep as concentrated solution. Aliquot and store at -20°C or below. Avoid multiple freeze-thaw cycles.

Precautions

MAPK4 / ERK4 Antibody (aa1-326) is for research use only and not for use in diagnostic or therapeutic procedures.

MAPK4 / ERK4 Antibody (aa1-326) - Protein Information

Name MAPK4

Synonyms ERK4, PRKM4

Function

Atypical MAPK protein. Phosphorylates microtubule-associated protein 2 (MAP2) and MAPKAPK5. The precise role of the complex formed with MAPKAPK5 is still unclear, but the complex follows a complex set of phosphorylation events: upon interaction with atypical MAPKAPK5, ERK4/MAPK4 is phosphorylated at Ser-186 and then mediates phosphorylation and activation of MAPKAPK5, which in turn phosphorylates ERK4/MAPK4. May promote entry in the cell cycle (By similarity).

Cellular Location

Cytoplasm. Nucleus. Note=Translocates to the cytoplasm following interaction with MAPKAPK5

Tissue Location

High expression in heart and brain.

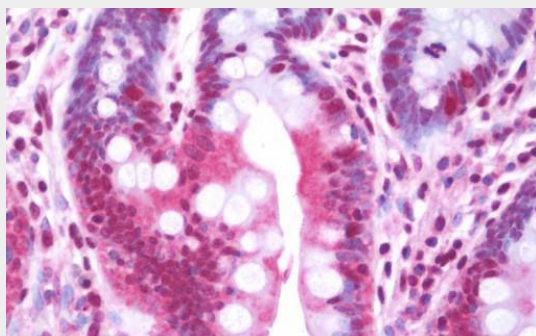
Volume

50 μ l

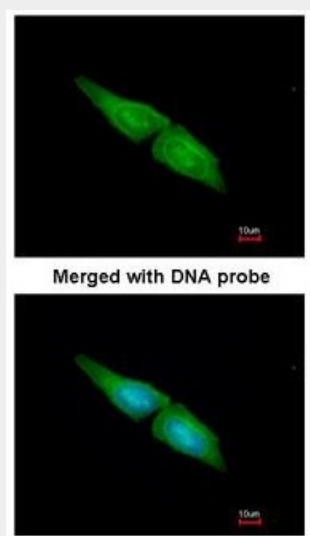
MAPK4 / ERK4 Antibody (aa1-326) - Protocols

Provided below are standard protocols that you may find useful for product applications.

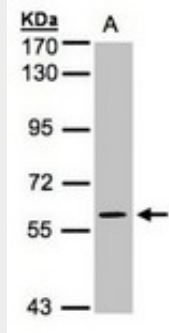
- [Western Blot](#)
- [Blocking Peptides](#)
- [Dot Blot](#)
- [Immunohistochemistry](#)
- [Immunofluorescence](#)
- [Immunoprecipitation](#)
- [Flow Cytometry](#)
- [Cell Culture](#)

MAPK4 / ERK4 Antibody (aa1-326) - Images

Anti-MAPK4 / ERK4 antibody IHC staining of human small intestine.



Immunofluorescence of paraformaldehyde-fixed HeLa using MAPK4 antibody at 1:200 dilution.



Sample (30 ug whole cell lysate). A: H1299. 7.5% SDS PAGE. MAPK4 / ERK4 antibody diluted at 1:1000

MAPK4 / ERK4 Antibody (aa1-326) - Background

Atypical MAPK protein. Phosphorylates microtubule-associated protein 2 (MAP2) and MAPKAPK5. The precise role of the complex formed with MAPKAPK5 is still unclear, but the complex follows a complex set of phosphorylation events: upon interaction with atypical MAPKAPK5, ERK4/MAPK4 is phosphorylated at Ser-186 and then mediates phosphorylation and activation of MAPKAPK5, which in turn phosphorylates ERK4/MAPK4. May promote entry in the cell cycle (By similarity).

MAPK4 / ERK4 Antibody (aa1-326) - References

- Gonzalez F.A., et al. FEBS Lett. 304:170-178(1992).
- Ota T., et al. Nat. Genet. 36:40-45(2004).
- Nusbaum C., et al. Nature 437:551-555(2005).
- Mural R.J., et al. Submitted (JUL-2005) to the EMBL/GenBank/DDBJ databases.
- Dephore N., et al. Proc. Natl. Acad. Sci. U.S.A. 105:10762-10767(2008).