

RAB4A / RAB4 Antibody (clone 4E11)
Mouse Monoclonal Antibody
Catalog # ALS16878**Specification**

RAB4A / RAB4 Antibody (clone 4E11) - Product Information

Application	IHC, WB, E
Primary Accession	P20338
Other Accession	5867
Reactivity	Human, Mouse, Monkey
Host	Mouse
Clonality	Monoclonal
Isotype	IgG1
Calculated MW	24390

RAB4A / RAB4 Antibody (clone 4E11) - Additional Information**Gene ID** 5867**Other Names**

RAB4A, HRES-1/RAB4, Oncogene RAB4, RAB4, Ras-related protein Rab-4A

Target/Specificity

Human RAB4A / RAB4

Reconstitution & Storage

PBS, 0.05% sodium azide, 0.5% protein stabilizer. Long term: -20°C; Short term: +4°C; Avoid freeze-thaw cycles.

Precautions

RAB4A / RAB4 Antibody (clone 4E11) is for research use only and not for use in diagnostic or therapeutic procedures.

RAB4A / RAB4 Antibody (clone 4E11) - Protein Information**Name** RAB4A**Synonyms** RAB4**Function**

Small GTPase which cycles between an active GTP-bound and an inactive GDP-bound state (PubMed: [15907487](http://www.uniprot.org/citations/15907487), PubMed: [16034420](http://www.uniprot.org/citations/16034420)). Involved in protein transport (PubMed: [29425100](http://www.uniprot.org/citations/29425100)). Plays a role in vesicular traffic. Mediates VEGFR2 endosomal trafficking to enhance VEGFR2 signaling (PubMed: [29425100](http://www.uniprot.org/citations/29425100)). Acts as a regulator of platelet alpha- granule release during activation and aggregation of platelets (By

similarity).

Cellular Location

Membrane; Peripheral membrane protein. Cytoplasm Early endosome membrane {ECO:0000250|UniProtKB:P05714}; Peripheral membrane protein {ECO:0000250|UniProtKB:P05714}. Recycling endosome membrane {ECO:0000250|UniProtKB:P05714}; Peripheral membrane protein {ECO:0000250|UniProtKB:P05714}. Note=Generally associated with membranes. Cytoplasmic when phosphorylated by CDK1

Volume

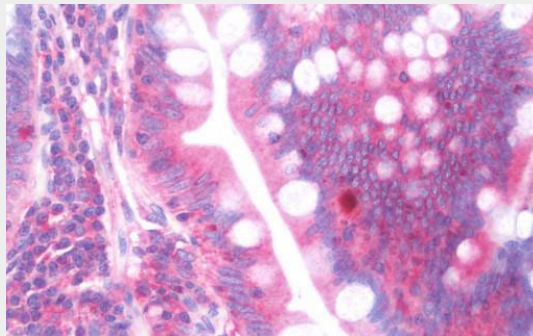
50 μ l

RAB4A / RAB4 Antibody (clone 4E11) - Protocols

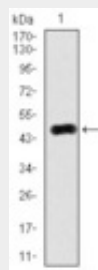
Provided below are standard protocols that you may find useful for product applications.

- [Western Blot](#)
- [Blocking Peptides](#)
- [Dot Blot](#)
- [Immunohistochemistry](#)
- [Immunofluorescence](#)
- [Immunoprecipitation](#)
- [Flow Cytometry](#)
- [Cell Culture](#)

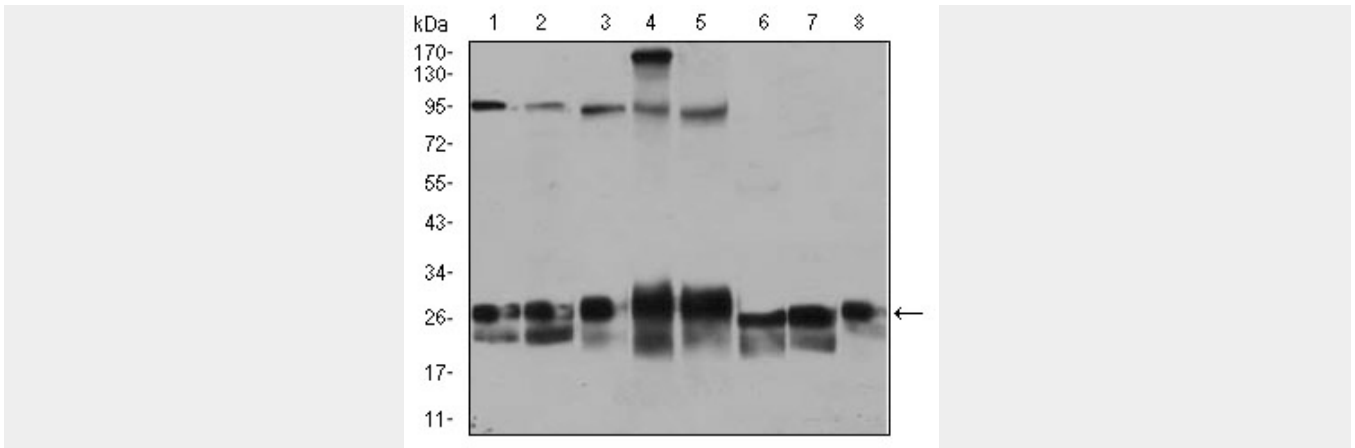
RAB4A / RAB4 Antibody (clone 4E11) - Images



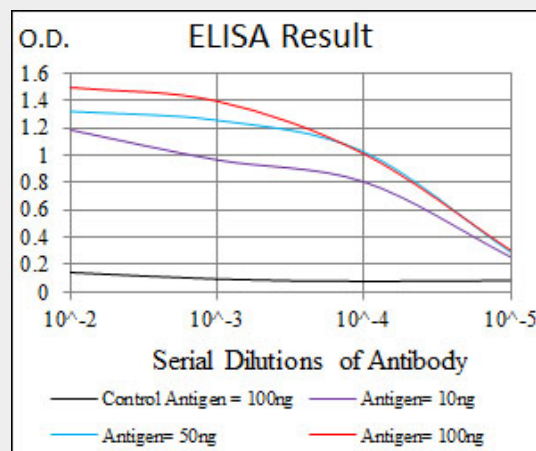
Anti-RAB4A / RAB4 antibody IHC staining of human small intestine.



Western blot using RAB4A monoclonal antibody against human RAB4A (AA: 22-218) recombinant protein.



Western blot using RAB4A mouse monoclonal antibody against Jurkat (1), HeLa (2), A549 (3),...



Red: Control Antigen (100ng); Purple: Antigen (10ng); Green: Antigen (50ng); Blue: Antigen (100ng);

RAB4A / RAB4 Antibody (clone 4E11) - Background

Protein transport. Probably involved in vesicular traffic (By similarity).

RAB4A / RAB4 Antibody (clone 4E11) - References

- Zahraoui A., et al. J. Biol. Chem. 264:12394-12401(1989).
- Nagy G., et al. J. Biol. Chem. 281:34574-34591(2006).
- Puhl H.L. III, et al. Submitted (APR-2002) to the EMBL/GenBank/DDBJ databases.
- Ota T., et al. Nat. Genet. 36:40-45(2004).
- Gregory S.G., et al. Nature 441:315-321(2006).