

PSAT1 Antibody (aa48-328)
Rabbit Polyclonal Antibody
Catalog # ALS16845

Specification

PSAT1 Antibody (aa48-328) - Product Information

Application	IHC, ICC, WB
Primary Accession	O9Y617
Other Accession	29968
Reactivity	Human, Mouse
Host	Rabbit
Clonality	Polyclonal
Isotype	IgG
Calculated MW	40423

PSAT1 Antibody (aa48-328) - Additional Information

Gene ID 29968

Other Names

PSAT1, EPIP, Phosphoserine aminotransferase, PSA, PSAT

Target/Specificity

Human PSAT1

Reconstitution & Storage

0.1 M Tris-glycine, pH 7.0, 10% glycerol, 0.01% Thimerosal. Keep as concentrated solution. Aliquot and store at -20°C or below. Avoid multiple freeze-thaw cycles.

Precautions

PSAT1 Antibody (aa48-328) is for research use only and not for use in diagnostic or therapeutic procedures.

PSAT1 Antibody (aa48-328) - Protein Information

Name PSAT1 ([HGNC:19129](#))

Synonyms PSA

Function

Involved in L-serine biosynthesis via the phosphorylated pathway, a three-step pathway converting the glycolytic intermediate 3- phospho-D-glycerate into L-serine. Catalyzes the second step, that is the pyridoxal 5'-phosphate-dependent transamination of 3- phosphohydroxypyruvate and L-glutamate to O-phosphoserine (OPS) and alpha-ketoglutarate.

Tissue Location

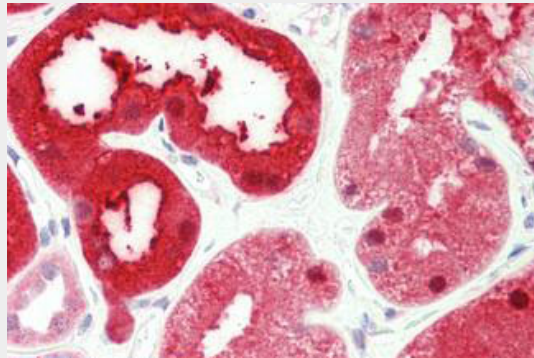
Expressed at high levels in the brain, liver, kidney and pancreas, and very weakly expressed in the thymus, prostate, testis and colon.

PSAT1 Antibody (aa48-328) - Protocols

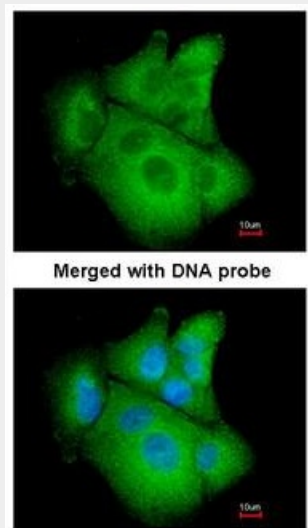
Provided below are standard protocols that you may find useful for product applications.

- [Western Blot](#)
- [Blocking Peptides](#)
- [Dot Blot](#)
- [Immunohistochemistry](#)
- [Immunofluorescence](#)
- [Immunoprecipitation](#)
- [Flow Cytometry](#)
- [Cell Culture](#)

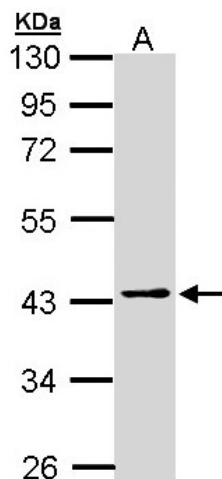
PSAT1 Antibody (aa48-328) - Images



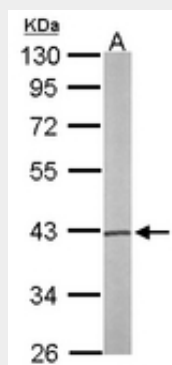
Anti-PSAT1 antibody IHC staining of human kidney.



Immunofluorescence of paraformaldehyde-fixed A549 using PSAT1 antibody at 1:200 dilution.



Sample (30 ug of whole cell lysate). A: H1299. 10% SDS PAGE. PSAT1 antibody diluted at 1:1000



Sample (50 ug of whole cell lysate). A: Mouse brain. 10% SDS PAGE. PSAT1 antibody diluted at 1:1000.

PSAT1 Antibody (aa48-328) - Background

Catalyzes the reversible conversion of 3- phosphohydroxypyruvate to phosphoserine and of 3-hydroxy-2-oxo-4- phosphonoxybutanoate to phosphohydroxythreonine.

PSAT1 Antibody (aa48-328) - References

- Baek J.Y.,et al.Biochem. J. 373:191-200(2003).
- Kalnine N.,et al.Submitted (MAY-2003) to the EMBL/GenBank/DDBJ databases.
- Humphray S.J.,et al.Nature 429:369-374(2004).
- Mural R.J.,et al.Submitted (JUL-2005) to the EMBL/GenBank/DDBJ databases.
- Gauci S.,et al.Anal. Chem. 81:4493-4501(2009).