

LAMP1 / CD107a Antibody (clone 5H6)
Mouse Monoclonal Antibody
Catalog # ALS16826**Specification**

LAMP1 / CD107a Antibody (clone 5H6) - Product Information

Application	IHC, ICC, WB
Primary Accession	P11279
Other Accession	3916
Reactivity	Human, Mouse, Rat, Pig, Bovine
Host	Mouse
Clonality	Monoclonal
Isotype	IgG1
Calculated MW	44882

LAMP1 / CD107a Antibody (clone 5H6) - Additional Information**Gene ID** 3916**Other Names**

LAMP1, CD107a, CD107a antigen, LAMP-1, LGP120, LAMPA

Reconstitution & Storage

PBS, 10 mM sodium azide. +4°C or -20°C, Avoid repeated freezing and thawing.

Precautions

LAMP1 / CD107a Antibody (clone 5H6) is for research use only and not for use in diagnostic or therapeutic procedures.

LAMP1 / CD107a Antibody (clone 5H6) - Protein Information**Name** LAMP1 {ECO:0000303|PubMed:23632890, ECO:0000312|HGNC:HGNC:6499}**Function**

Lysosomal membrane glycoprotein which plays an important role in lysosome biogenesis, lysosomal pH regulation, autophagy and cholesterol homeostasis (PubMed:37390818). Acts as an important regulator of lysosomal lumen pH regulation by acting as a direct inhibitor of the proton channel TMEM175, facilitating lysosomal acidification for optimal hydrolase activity (PubMed:37390818). Also plays an important role in NK-cells cytotoxicity (PubMed:2022921, PubMed:23632890). Mechanistically, participates in cytotoxic granule movement to the cell surface and perforin trafficking to the lytic granule (PubMed:23632890). In addition, protects NK-cells from degranulation-associated damage induced by their own cytotoxic granule content (PubMed:23847195). Presents

carbohydrate ligands to selectins (PubMed:7685349).

Cellular Location

Lysosome membrane; Single-pass type I membrane protein. Endosome membrane; Single-pass type I membrane protein. Late endosome membrane; Single-pass type I membrane protein. Cell membrane; Single-pass type I membrane protein. Cytolytic granule membrane; Single-pass type I membrane protein. Note=This protein shuttles between lysosomes, endosomes, and the plasma membrane (By similarity). Colocalizes with OSBPL1A at the late endosome (PubMed:16176980). {ECO:0000250|UniProtKB:P05300, ECO:0000269|PubMed:16176980, ECO:0000269|PubMed:17897319}

Volume

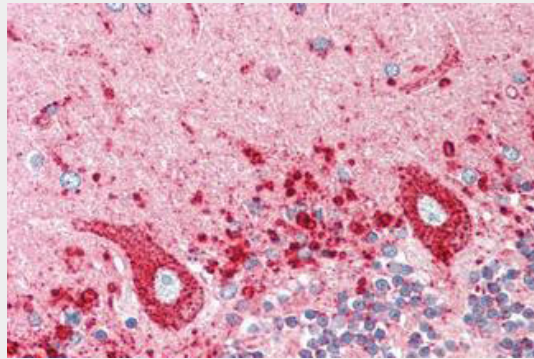
50 µl

LAMP1 / CD107a Antibody (clone 5H6) - Protocols

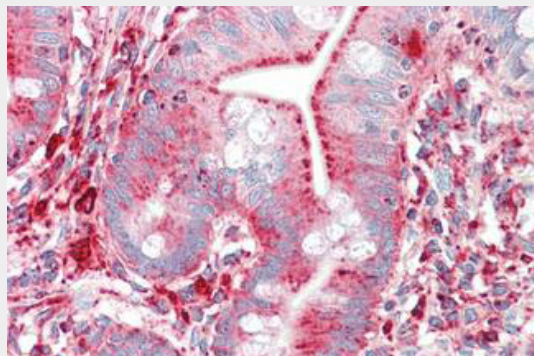
Provided below are standard protocols that you may find useful for product applications.

- [Western Blot](#)
- [Blocking Peptides](#)
- [Dot Blot](#)
- [Immunohistochemistry](#)
- [Immunofluorescence](#)
- [Immunoprecipitation](#)
- [Flow Cytometry](#)
- [Cell Culture](#)

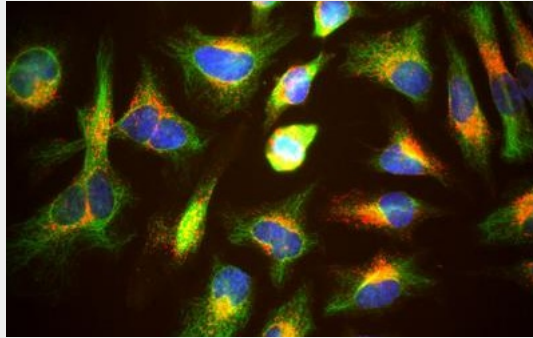
LAMP1 / CD107a Antibody (clone 5H6) - Images



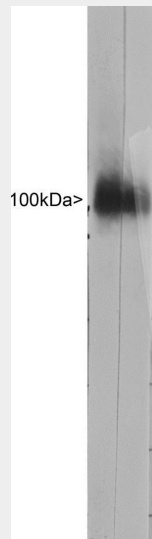
Anti-LAMP1 / CD107a antibody IHC staining of human brain, cerebellum.



Anti-LAMP1 / CD107a antibody IHC staining of human small intestine.



HeLa cells staining with CD107a / LAMP1 antibody (red), and counterstained with chicken...



Western strip blots of HeLa cell crude extracts stained with anti LAMP1 antibody CD107a / LAMP1...

LAMP1 / CD107a Antibody (clone 5H6) - Background

Presents carbohydrate ligands to selectins. Also implicated in tumor cell metastasis.

LAMP1 / CD107a Antibody (clone 5H6) - References

- Fukuda M.,et al.J. Biol. Chem. 263:18920-18928(1988).
- Ota T.,et al.Nat. Genet. 36:40-45(2004).
- Dunham A.,et al.Nature 428:522-528(2004).
- Mural R.J.,et al.Submitted (JUL-2005) to the EMBL/GenBank/DDBJ databases.
- Mane S.M.,et al.Arch. Biochem. Biophys. 268:360-378(1989).