

**ALDOC / Aldolase C Antibody (clone IgG1, k)**  
**Mouse Monoclonal Antibody**  
**Catalog # ALS16825**

**Specification**

---

**ALDOC / Aldolase C Antibody (clone IgG1, k) - Product Information**

Application	IHC
Primary Accession	<a href="#">P09972</a>
Other Accession	<a href="#">230</a>
Reactivity	Human, Bovine
Host	Mouse
Clonality	Monoclonal
Isotype	IgG1,k
Calculated MW	39456

**ALDOC / Aldolase C Antibody (clone IgG1, k) - Additional Information**

**Gene ID** [230](#)

**Other Names**

ALDOC, ALDC, Aldolase 3, Fructoaldolase C, Brain-type aldolase

**Target/Specificity**

Recognizes aldolase C specifically both in western blots and in immunocytochemical experiments. Western blot shows a 40 kD band.

**Reconstitution & Storage**

PBS with 0.05% sodium azide. Short term 4°C, long term aliquot and store at -20°C, avoid freeze thaw cycles. Store undiluted.

**Precautions**

ALDOC / Aldolase C Antibody (clone IgG1, k) is for research use only and not for use in diagnostic or therapeutic procedures.

**ALDOC / Aldolase C Antibody (clone IgG1, k) - Protein Information**

**Name** ALDOC

**Synonyms** ALDC

**Volume**

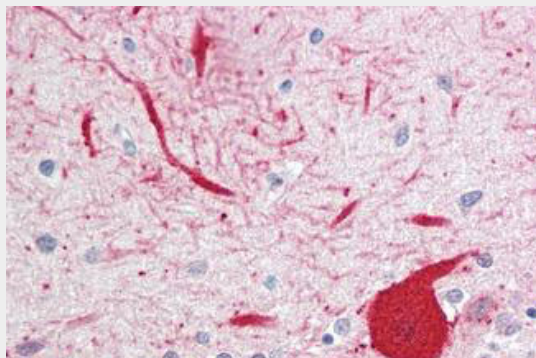
50 µl

**ALDOC / Aldolase C Antibody (clone IgG1, k) - Protocols**

Provided below are standard protocols that you may find useful for product applications.

- [Western Blot](#)
- [Blocking Peptides](#)
- [Dot Blot](#)
- [Immunohistochemistry](#)
- [Immunofluorescence](#)
- [Immunoprecipitation](#)
- [Flow Cytometry](#)
- [Cell Culture](#)

#### **ALDOC / Aldolase C Antibody (clone IgG1, k) - Images**



Anti-ALDOC / Aldolase 3 antibody IHC staining of human brain, cerebellum.

#### **ALDOC / Aldolase C Antibody (clone IgG1, k) - References**

- Rottmann W.H., et al. *Biochimie* 69:137-145(1987).  
Buono P., et al. *Nucleic Acids Res.* 16:4733-4733(1988).  
Buono P., et al. *Eur. J. Biochem.* 192:805-811(1990).  
Yu W., et al. Submitted (MAR-1998) to the EMBL/GenBank/DDBJ databases.  
Kalnina N., et al. Submitted (MAY-2003) to the EMBL/GenBank/DDBJ databases.