

SDCCAG8 Antibody (aa469-483)
Goat Polyclonal Antibody
Catalog # ALS16815**Specification**

SDCCAG8 Antibody (aa469-483) - Product Information

| | |
|-------------------|------------------------|
| Application | IHC |
| Primary Accession | O86S07 |
| Other Accession | 10806 |
| Reactivity | Human |
| Host | Goat |
| Clonality | Polyclonal |
| Calculated MW | 82682 |

SDCCAG8 Antibody (aa469-483) - Additional Information

Gene ID 10806

Other Names

SDCCAG8, Antigen NY-CO-8, CCCAP, CCCAP SLSN7, HCCCAP, NPHP10, NY-CO-8, HSPC085, SLSN7, BBS16

Target/Specificity

Human SDCCAG8.

Reconstitution & Storage

Tris-buffered saline, pH 7.3, 0.5% BSA, 0.02% sodium azide. Store at -20°C. Minimize freezing and thawing.

Precautions

SDCCAG8 Antibody (aa469-483) is for research use only and not for use in diagnostic or therapeutic procedures.

SDCCAG8 Antibody (aa469-483) - Protein Information

Name SDCCAG8

Synonyms CCCAP, NPHP10

Function

Plays a role in the establishment of cell polarity and epithelial lumen formation (By similarity). Also plays an essential role in ciliogenesis and subsequent Hedgehog signaling pathway that requires the presence of intact primary cilia for pathway activation. Mechanistically, interacts with and mediates RABEP2 centrosomal localization which is critical for ciliogenesis (PubMed:27224062).

Cellular Location

Cytoplasm, cytoskeleton, microtubule organizing center, centrosome, centriole. Cytoplasm,

cytoskeleton, microtubule organizing center, centrosome. Cytoplasm, cytoskeleton, cilium basal body. Cell junction. Note=Located at the distal ends of both centrioles and colocalizes to centrosomes throughout the cell cycle

Tissue Location

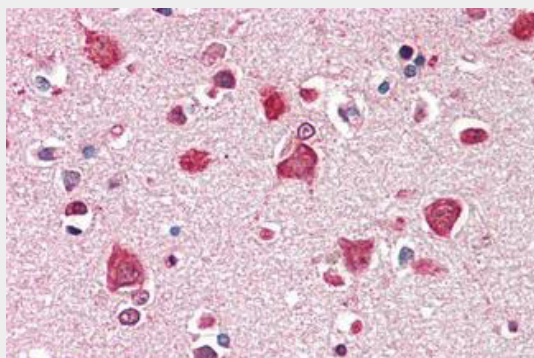
Expressed in thymus, prostate, testis, ovary, small intestine, colon, mucosa, colon and renal cancer tumors

SDCCAG8 Antibody (aa469-483) - Protocols

Provided below are standard protocols that you may find useful for product applications.

- [Western Blot](#)
- [Blocking Peptides](#)
- [Dot Blot](#)
- [Immunohistochemistry](#)
- [Immunofluorescence](#)
- [Immunoprecipitation](#)
- [Flow Cytometry](#)
- [Cell Culture](#)

SDCCAG8 Antibody (aa469-483) - Images



Anti-SDCCAG8 antibody IHC staining of human brain, cortex.

SDCCAG8 Antibody (aa469-483) - Background

Plays a role in the establishment of cell polarity and epithelial lumen formation (By similarity). May play a role in ciliogenesis.

SDCCAG8 Antibody (aa469-483) - References

Kenedy A.A., et al. *Gene* 303:35-46(2003).
Zhang Q.-H., et al. *Genome Res.* 10:1546-1560(2000).
Scanlan M.J., et al. *Int. J. Cancer* 76:652-658(1998).
Andersen J.S., et al. *Nature* 426:570-574(2003).
Otto E.A., et al. *Nat. Genet.* 42:840-850(2010).