

SERPINA1 / Alpha 1 Antitrypsin Antibody (clone 9A1)
Mouse Monoclonal Antibody
Catalog # ALS16806

Specification

SERPINA1 / Alpha 1 Antitrypsin Antibody (clone 9A1) - Product Information

| | |
|-------------------|------------------------|
| Application | IHC, WB, FC |
| Primary Accession | P01009 |
| Other Accession | 5265 |
| Reactivity | Human, Monkey, Dog |
| Host | Mouse |
| Clonality | Monoclonal |
| Isotype | IgG1 |
| Calculated MW | 46737 |

SERPINA1 / Alpha 1 Antitrypsin Antibody (clone 9A1) - Additional Information

Gene ID 5265

Other Names

SERPINA1, A1A, A1AT, AAT, Alpha 1 Antitrypsin, Alpha-1 protease inhibitor, Alpha-1-antiproteinase, Alpha-1-antitrypsin, Alpha1AT, PRO2275, Alpha-1-antitrypsin null, PI1, Serpin A1

Target/Specificity

Human SERPINA1 / Alpha 1 Antitrypsin

Reconstitution & Storage

PBS, pH 7.3, 1% BSA, 50% glycerol, 0.02% sodium azide. Store at -20°C. Minimize freezing and thawing.

Precautions

SERPINA1 / Alpha 1 Antitrypsin Antibody (clone 9A1) is for research use only and not for use in diagnostic or therapeutic procedures.

SERPINA1 / Alpha 1 Antitrypsin Antibody (clone 9A1) - Protein Information

Name SERPINA1 ([HGNC:8941](#))

Synonyms AAT, PI

Function

Inhibitor of serine proteases. Its primary target is elastase, but it also has a moderate affinity for plasmin and thrombin. Irreversibly inhibits trypsin, chymotrypsin and plasminogen activator. The aberrant form inhibits insulin-induced NO synthesis in platelets, decreases coagulation time and has proteolytic activity against insulin and plasmin.

Cellular Location

Secreted. Endoplasmic reticulum. Note=The S and Z allele are not secreted effectively and

accumulate intracellularly in the endoplasmic reticulum

Tissue Location

Ubiquitous. Expressed in leukocytes and plasma.

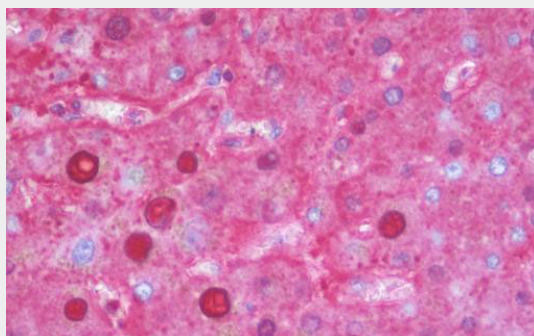
Volume

50 μ l

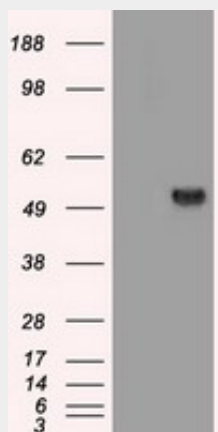
SERPINA1 / Alpha 1 Antitrypsin Antibody (clone 9A1) - Protocols

Provided below are standard protocols that you may find useful for product applications.

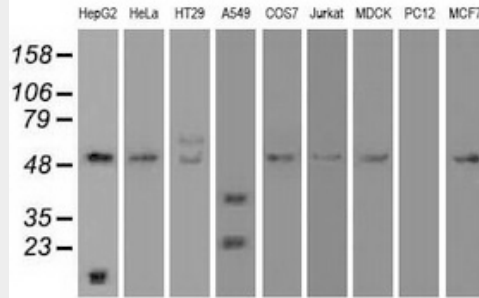
- [Western Blot](#)
- [Blocking Peptides](#)
- [Dot Blot](#)
- [Immunohistochemistry](#)
- [Immunofluorescence](#)
- [Immunoprecipitation](#)
- [Flow Cytometry](#)
- [Cell Culture](#)

SERPINA1 / Alpha 1 Antitrypsin Antibody (clone 9A1) - Images

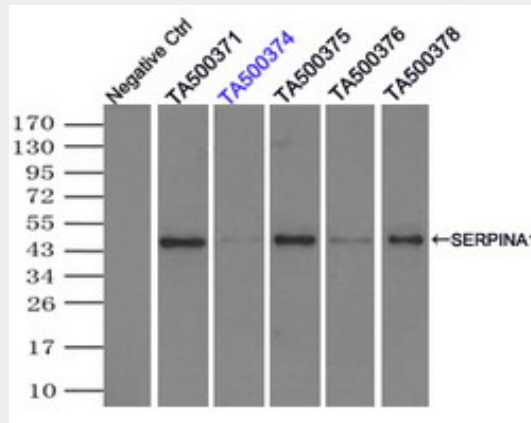
Anti-SERPINA1 / Alpha 1 Antitrypsin antibody IHC staining of human liver.



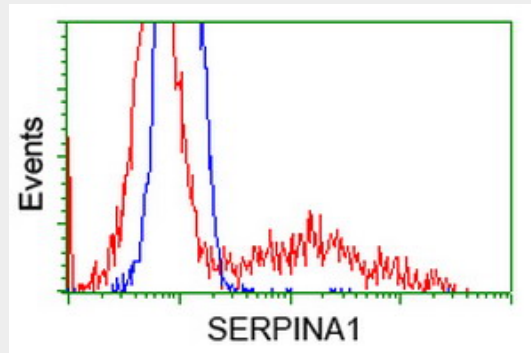
HEK293T cells were transfected with the pCMV6-ENTRY control (Left lane) or pCMV6-ENTRY SERPINA1...



Western blot of extracts (35 ug) from 9 different cell lines by using anti-SERPINA1 monoclonal...



Immunoprecipitation(IP) of SERPINA1 by using TrueMab monoclonal anti-SERPINA1 antibodies...



HEK293T cells transfected with either overexpress plasmid (Red) or empty vector control plasmid...

SERPINA1 / Alpha 1 Antitrypsin Antibody (clone 9A1) - Background

Inhibitor of serine proteases. Its primary target is elastase, but it also has a moderate affinity for plasmin and thrombin. Irreversibly inhibits trypsin, chymotrypsin and plasminogen activator. The aberrant form inhibits insulin-induced NO synthesis in platelets, decreases coagulation time and has proteolytic activity against insulin and plasmin.

SERPINA1 / Alpha 1 Antitrypsin Antibody (clone 9A1) - References

Bollen A.,et al.DNA 2:255-264(1983).
 Long G.L.,et al.Biochemistry 23:4828-4837(1984).
 Rosenberg S.,et al.Nature 312:77-80(1984).
 Ciliberto G.,et al.Cell 41:531-540(1985).

Nukiwa T., et al. J. Biol. Chem. 261:15989-15994(1986).