

**VTN / Vitronectin Antibody**  
**Sheep Polyclonal Antibody**  
**Catalog # ALS16805**

**Specification**

---

**VTN / Vitronectin Antibody - Product Information**

Application	IHC
Primary Accession	<a href="#">P04004</a>
Other Accession	<a href="#">7448</a>
Reactivity	Human
Host	Sheep
Clonality	Polyclonal
Isotype	IgG
Calculated MW	54306

**VTN / Vitronectin Antibody - Additional Information**

**Gene ID** 7448

**Other Names**

VTN, Epibolin, Serum-spreading factor, VNT, S-protein, Somatomedin B, V75, VN, Complement S-protein, Serum spreading factor, Vitronectin

**Target/Specificity**

Specific for vitronectin as demonstrated by immunoelectrophoresis. A single precipitin arc is observed with normal plasma, of identical mobility to that obtained with purified vitronectin.

**Reconstitution & Storage**

0.01 M HEPES, pH 7.4, 0.15 M sodium chloride, 50% glycerol. Long term: -20°C; Short term: +4°C. Avoid repeat freeze-thaw cycles.

**Precautions**

VTN / Vitronectin Antibody is for research use only and not for use in diagnostic or therapeutic procedures.

**VTN / Vitronectin Antibody - Protein Information**

**Name** VTN

**Function**

Vitronectin is a cell adhesion and spreading factor found in serum and tissues. Vitronectin interact with glycosaminoglycans and proteoglycans. Is recognized by certain members of the integrin family and serves as a cell-to-substrate adhesion molecule. Inhibitor of the membrane-damaging effect of the terminal cytolytic complement pathway.

**Cellular Location**

Secreted, extracellular space

### Tissue Location

Expressed in the retina pigment epithelium (at protein level) (PubMed:25136834). Expressed in plasma (at protein level) (PubMed:2448300). Expressed in serum (at protein level) (PubMed:29567995).

### Volume

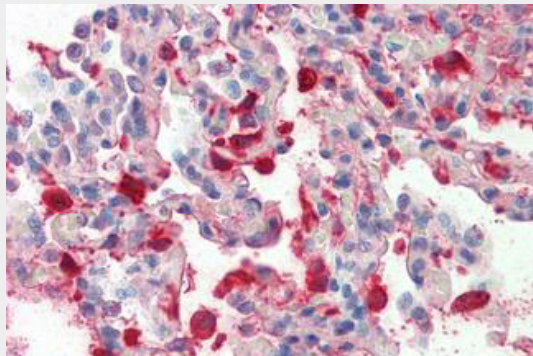
50  $\mu$ l

### VTN / Vitronectin Antibody - Protocols

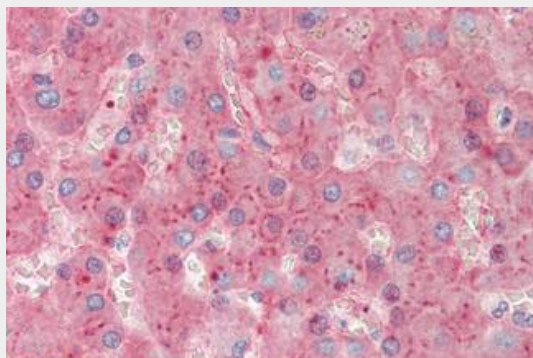
Provided below are standard protocols that you may find useful for product applications.

- [Western Blot](#)
- [Blocking Peptides](#)
- [Dot Blot](#)
- [Immunohistochemistry](#)
- [Immunofluorescence](#)
- [Immunoprecipitation](#)
- [Flow Cytometry](#)
- [Cell Culture](#)

### VTN / Vitronectin Antibody - Images



Anti-VTN / Vitronectin antibody IHC staining of human lung.



Anti-VTN / Vitronectin antibody IHC staining of human liver.

### VTN / Vitronectin Antibody - Background

Vitronectin is a cell adhesion and spreading factor found in serum and tissues. Vitronectin interact with glycosaminoglycans and proteoglycans. Is recognized by certain members of the integrin

family and serves as a cell-to-substrate adhesion molecule. Inhibitor of the membrane-damaging effect of the terminal cytolytic complement pathway.

#### **VTN / Vitronectin Antibody - References**

- Suzuki S.,et al.EMBO J. 4:2519-2524(1985).  
Suzuki S.,et al.Submitted (JUN-1986) to the PIR data bank.  
Jenne D.E.,et al.EMBO J. 4:3153-3157(1985).  
Jenne D.E.,et al.Biochemistry 26:6735-6742(1987).  
Ota T.,et al.Nat. Genet. 36:40-45(2004).