

SLC33A1 Antibody
Rabbit Polyclonal Antibody
Catalog # ALS16800**Specification**

SLC33A1 Antibody - Product Information

Application	IHC, ICC, FC
Primary Accession	O00400
Other Accession	9197
Reactivity	Human
Host	Rabbit
Clonality	Polyclonal
Calculated MW	60909

SLC33A1 Antibody - Additional Information**Gene ID** 9197**Other Names**

SLC33A1, ACATN, Acetyl-CoA transporter 1, Acetyl-CoA transporter, CCHLND, Acetyl-Coenzyme A transporter, SPG42, AT-1, AT1

Target/Specificity

Human SLC33A1

Reconstitution & Storage

PBS, pH 7.2, 50% glycerol. Store at -20°C.

Precautions

SLC33A1 Antibody is for research use only and not for use in diagnostic or therapeutic procedures.

SLC33A1 Antibody - Protein Information**Name** SLC33A1 ([HGNC:95](#))**Synonyms** ACATN, AT1**Function**

Acetyl-CoA transporter that mediates active acetyl-CoA import through the endoplasmic reticulum (ER) membrane into the ER lumen where specific ER-based acetyl-CoA:lysine acetyltransferases are responsible for the acetylation of ER-based protein substrates, such as BACE1 (PubMed: [20826464](http://www.uniprot.org/citations/20826464)), PubMed: [24828632](http://www.uniprot.org/citations/24828632)). Necessary for O-acetylation of gangliosides (PubMed: [9096318](http://www.uniprot.org/citations/9096318)).

Cellular Location

Endoplasmic reticulum membrane; Multi-pass membrane protein

Tissue Location

Ubiquitous. Detected in heart, brain, placenta, lung, liver, skeletal muscle, kidney and pancreas. With strongest signals in pancreas.

Volume

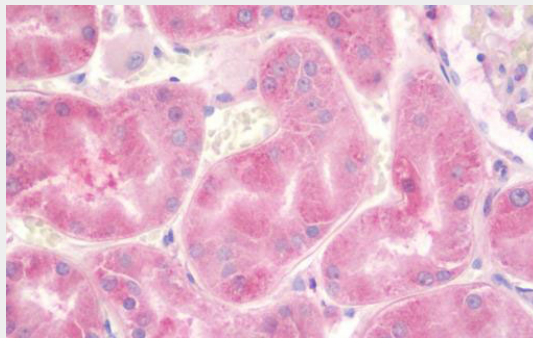
50 μ l

SLC33A1 Antibody - Protocols

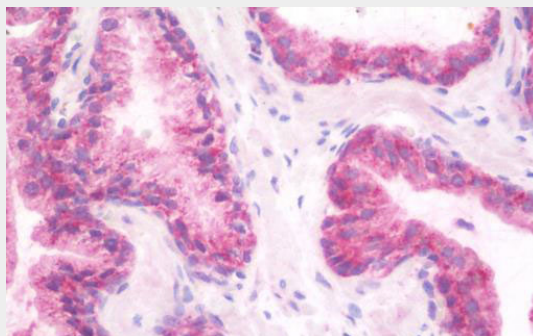
Provided below are standard protocols that you may find useful for product applications.

- [Western Blot](#)
- [Blocking Peptides](#)
- [Dot Blot](#)
- [Immunohistochemistry](#)
- [Immunofluorescence](#)
- [Immunoprecipitation](#)
- [Flow Cytometry](#)
- [Cell Culture](#)

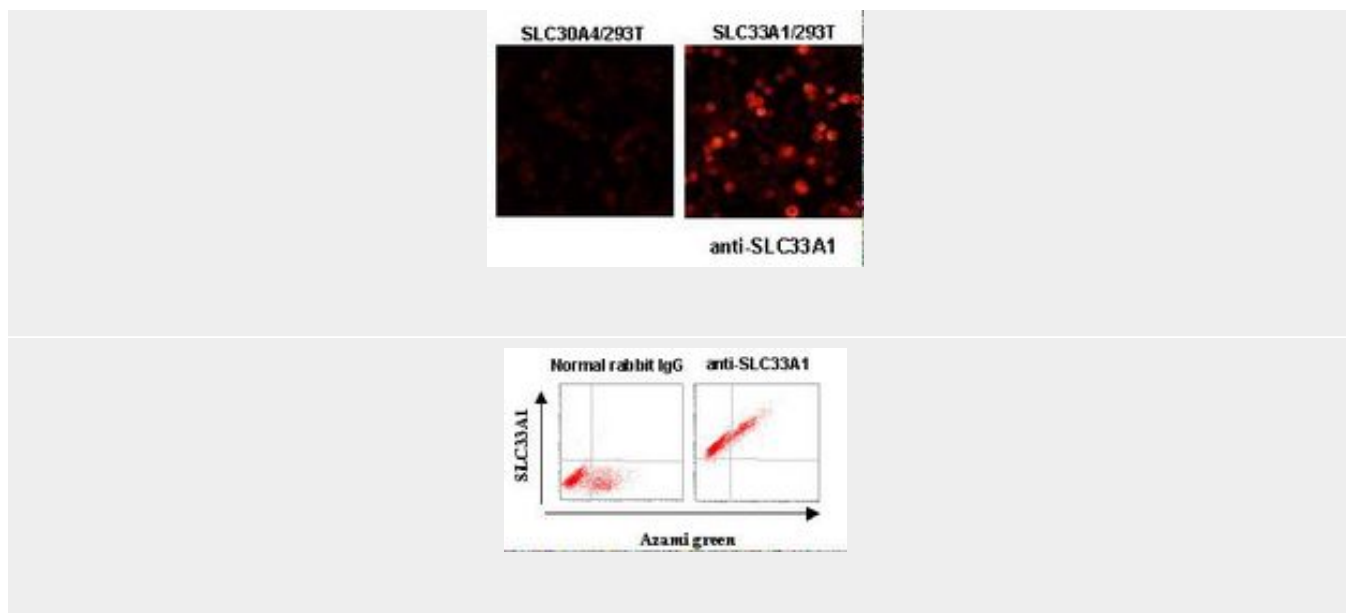
SLC33A1 Antibody - Images



Anti-SLC33A1 antibody IHC staining of human kidney.



Anti-SLC33A1 antibody IHC staining of human prostate.



SLC33A1 Antibody - Background

Probable acetyl-CoA transporter necessary for O- acetylation of gangliosides.

SLC33A1 Antibody - References

- Kanamori A.,et al.Proc. Natl. Acad. Sci. U.S.A. 94:2897-2902(1997).
- Ota T.,et al.Nat. Genet. 36:40-45(2004).
- Mural R.J.,et al.Submitted (SEP-2005) to the EMBL/GenBank/DDBJ databases.
- Sjoebloom T.,et al.Science 314:268-274(2006).
- Lin P.,et al.Am. J. Hum. Genet. 83:752-759(2008).