

**COL7A1 / Collagen VII Antibody (aa1841-1890)**  
**Rabbit Polyclonal Antibody**  
**Catalog # ALS16795****Specification**

---

**COL7A1 / Collagen VII Antibody (aa1841-1890) - Product Information**

Application	IHC, ICC
Primary Accession	<a href="#">Q02388</a>
Other Accession	<a href="#">1294</a>
Reactivity	Human, Mouse
Host	Rabbit
Clonality	Polyclonal
Isotype	IgG
Calculated MW	295220

**COL7A1 / Collagen VII Antibody (aa1841-1890) - Additional Information****Gene ID** 1294**Other Names**

COL7A1, Collagen alpha 1(vii), Collagen alpha-1(VII) chain, EBDCT, EBR1, Long-chain collagen, Collagen VII, Collagen, type VII, alpha 1, EBD1, LC collagen

**Target/Specificity**

Collagen VII alpha1 Antibody detects endogenous levels of total Collagen VII alpha1 protein.

**Reconstitution & Storage**

PBS, pH 7.4, 150 mM sodium chloride, 0.02% sodium azide, 50% glycerol. Store at -20°C.

**Precautions**

COL7A1 / Collagen VII Antibody (aa1841-1890) is for research use only and not for use in diagnostic or therapeutic procedures.

**COL7A1 / Collagen VII Antibody (aa1841-1890) - Protein Information****Name** COL7A1**Function**

Stratified squamous epithelial basement membrane protein that forms anchoring fibrils which may contribute to epithelial basement membrane organization and adherence by interacting with extracellular matrix (ECM) proteins such as type IV collagen.

**Cellular Location**

Secreted, extracellular space, extracellular matrix, basement membrane

**Volume**

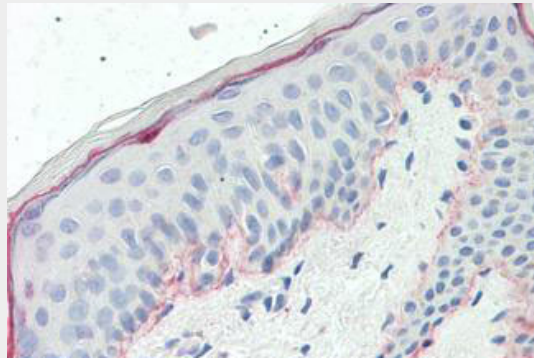
50 µl

## COL7A1 / Collagen VII Antibody (aa1841-1890) - Protocols

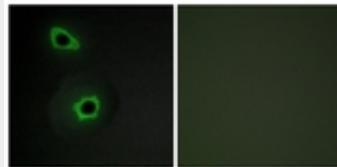
Provided below are standard protocols that you may find useful for product applications.

- [Western Blot](#)
- [Blocking Peptides](#)
- [Dot Blot](#)
- [Immunohistochemistry](#)
- [Immunofluorescence](#)
- [Immunoprecipitation](#)
- [Flow Cytometry](#)
- [Cell Culture](#)

## COL7A1 / Collagen VII Antibody (aa1841-1890) - Images



Anti-COL7A1 / Collagen VII antibody IHC staining of human skin.



Immunofluorescence of COS7 cells, using Collagen VII alpha1 Antibody.

## COL7A1 / Collagen VII Antibody (aa1841-1890) - Background

Stratified squamous epithelial basement membrane protein that forms anchoring fibrils which may contribute to epithelial basement membrane organization and adherence by interacting with extracellular matrix (ECM) proteins such as type IV collagen.

## COL7A1 / Collagen VII Antibody (aa1841-1890) - References

- Christiano A.M., et al. *Genomics* 21:169-179(1994).  
Christiano A.M., et al. *J. Biol. Chem.* 269:20256-20262(1994).  
Christiano A.M., et al. *Hum. Mol. Genet.* 1:475-481(1992).  
Tanaka T., et al. *Biochem. Biophys. Res. Commun.* 183:958-963(1992).  
Gammon W.R., et al. *J. Invest. Dermatol.* 99:691-696(1992).