

IL1RL2 Antibody (Internal)
Rabbit Polyclonal Antibody
Catalog # ALS16774**Specification**

IL1RL2 Antibody (Internal) - Product Information

| | |
|-------------------|------------------------|
| Application | IHC, IF, WB |
| Primary Accession | O9HB29 |
| Other Accession | 8808 |
| Reactivity | Human, Mouse, Rat |
| Host | Rabbit |
| Clonality | Polyclonal |
| Isotype | IgG |
| Calculated MW | 65405 |

IL1RL2 Antibody (Internal) - Additional Information**Gene ID** 8808**Other Names**

IL1RL2, IL-1Rrp2, IL1R-rp2, IL1RRP2, Interleukin 1 receptor-like 2, Interleukin-1 receptor-like 2, IL-36R

Target/Specificity

IL-1RL2 antibody is human, mouse and rat reactive. At least three isoforms of IL-1RL2 are known to exist; this antibody will detect all three isoforms. IL-1RL2 antibody is predicted to not cross-react with IL-1R or IL-1RL1.

Reconstitution & Storage

PBS, 0.02% sodium azide. Long term: -20°C; Short term: +4°C. Avoid repeat freeze-thaw cycles.

Precautions

IL1RL2 Antibody (Internal) is for research use only and not for use in diagnostic or therapeutic procedures.

IL1RL2 Antibody (Internal) - Protein Information**Name** IL1RL2**Synonyms** IL1RRP2**Function**

Receptor for interleukin-36 (IL36A, IL36B and IL36G). After binding to interleukin-36 associates with the coreceptor IL1RAP to form the interleukin-36 receptor complex which mediates interleukin-36- dependent activation of NF-kappa-B, MAPK and other pathways (By similarity). The IL-36 signaling system is thought to be present in epithelial barriers and to take part in local inflammatory response; it is similar to the IL-1 system. Seems to be involved in skin inflammatory response by induction of the IL-23/IL-17/IL-22 pathway.

Cellular Location

Membrane; Single-pass type I membrane protein

Tissue Location

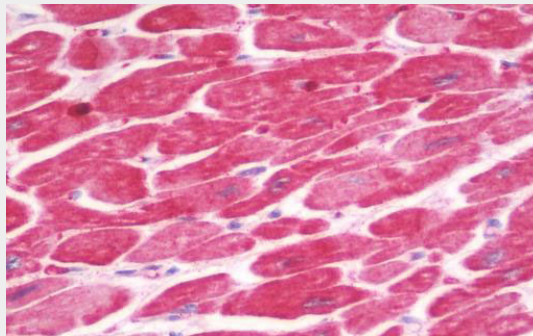
Expressed in synovial fibroblasts and articular chondrocytes. Expressed in keratinocytes and monocyte-derived dendritic cells. Expressed in monocytes and myeloid dendritic cells; at protein level.

IL1RL2 Antibody (Internal) - Protocols

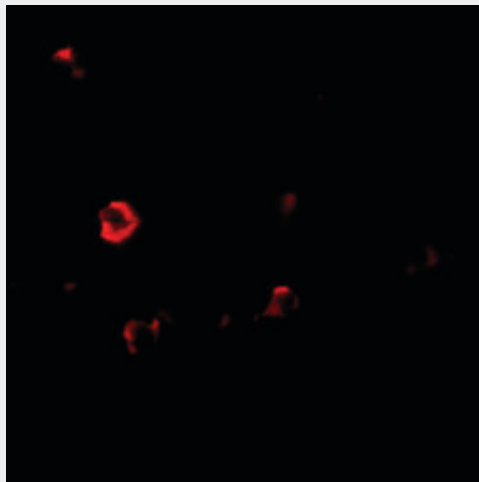
Provided below are standard protocols that you may find useful for product applications.

- [Western Blot](#)
- [Blocking Peptides](#)
- [Dot Blot](#)
- [Immunohistochemistry](#)
- [Immunofluorescence](#)
- [Immunoprecipitation](#)
- [Flow Cytometry](#)
- [Cell Culture](#)

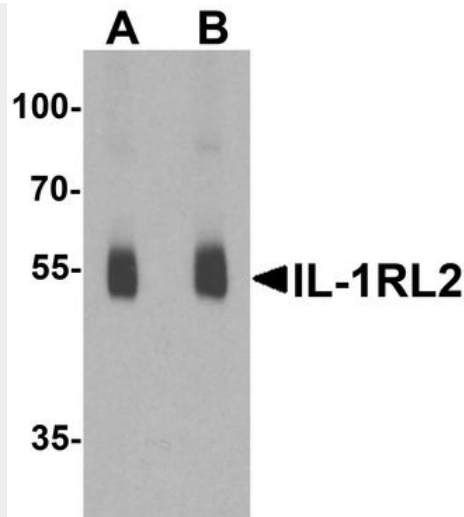
IL1RL2 Antibody (Internal) - Images



Anti-IL1RL2 antibody IHC staining of human heart.



Immunofluorescence of IL-1RL2 in human small intestine tissue with IL-1RL2 antibody at 20 ug/ml.



Western blot analysis of IL-1RL2 in human small intestine lysate with IL-1RL2 antibody at (A) 1...

IL1RL2 Antibody (Internal) - Background

Receptor for interleukin-36 (IL36A, IL36B and IL36G). After binding to interleukin-36 associates with the coreceptor IL1RAP to form the interleukin-36 receptor complex which mediates interleukin-36-dependent activation of NF-kappa-B, MAPK and other pathways (By similarity). The IL-36 signaling system is thought to be present in epithelial barriers and to take part in local inflammatory response; it is similar to the IL-1 system. Seems to be involved in skin inflammatory response by induction of the IL- 23/IL-17/IL-22 pathway.

IL1RL2 Antibody (Internal) - References

Born T.L.,et al.J. Biol. Chem. 275:29946-29954(2000).
 Lovenberg T.W.,et al.J. Neuroimmunol. 70:113-122(1996).
 Hillier L.W.,et al.Nature 434:724-731(2005).
 Debets R.,et al.J. Immunol. 167:1440-1446(2001).
 Magne D.,et al.Arthritis Res. Ther. 8:R80-R80(2006).