

**ARSB / Arylsulfatase B Antibody (C-Terminus)**  
**Rabbit Polyclonal Antibody**  
**Catalog # ALS16770**

**Specification**

---

**ARSB / Arylsulfatase B Antibody (C-Terminus) - Product Information**

Application	IHC, IF, WB
Primary Accession	<a href="#">P15848</a>
Other Accession	<a href="#">411</a>
Reactivity	Human, Mouse, Rat
Host	Rabbit
Clonality	Polyclonal
Isotype	IgG
Calculated MW	59687

**ARSB / Arylsulfatase B Antibody (C-Terminus) - Additional Information**

**Gene ID** 411

**Other Names**

ARSB, Arylsulfatase B, ASB, G4S, MPS6

**Target/Specificity**

ARSB antibody is human, mouse and rat reactive. At least two isoforms of ARSB are known to exist; this antibody only recognizes the longest isoform.

**Reconstitution & Storage**

PBS, 0.02% sodium azide. Long term: -20°C; Short term: +4°C. Avoid repeat freeze-thaw cycles.

**Precautions**

ARSB / Arylsulfatase B Antibody (C-Terminus) is for research use only and not for use in diagnostic or therapeutic procedures.

**ARSB / Arylsulfatase B Antibody (C-Terminus) - Protein Information**

**Name** ARSB

**Function**

Removes sulfate groups from chondroitin-4-sulfate (C4S) and regulates its degradation (PubMed:<a href="http://www.uniprot.org/citations/19306108" target="\_blank">19306108</a>). Involved in the regulation of cell adhesion, cell migration and invasion in colonic epithelium (PubMed:<a href="http://www.uniprot.org/citations/19306108" target="\_blank">19306108</a>). In the central nervous system, is a regulator of neurite outgrowth and neuronal plasticity, acting through the control of sulfate glycosaminoglycans and neurocan levels (By similarity).

**Cellular Location**

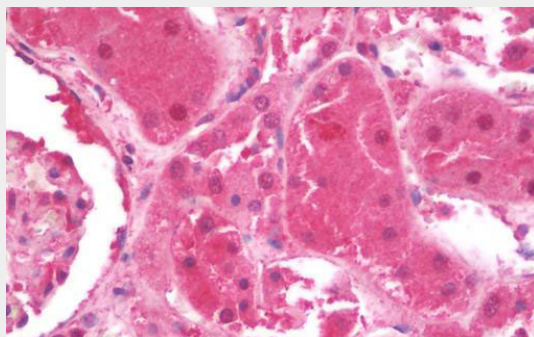
Lysosome {ECO:0000250|UniProtKB:P50429}. Cell surface {ECO:0000250|UniProtKB:P50429}

## ARSB / Arylsulfatase B Antibody (C-Terminus) - Protocols

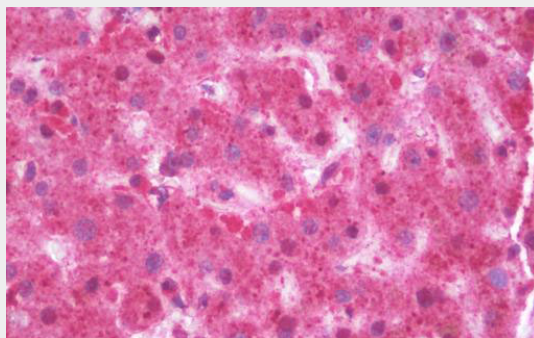
Provided below are standard protocols that you may find useful for product applications.

- [Western Blot](#)
- [Blocking Peptides](#)
- [Dot Blot](#)
- [Immunohistochemistry](#)
- [Immunofluorescence](#)
- [Immunoprecipitation](#)
- [Flow Cytometry](#)
- [Cell Culture](#)

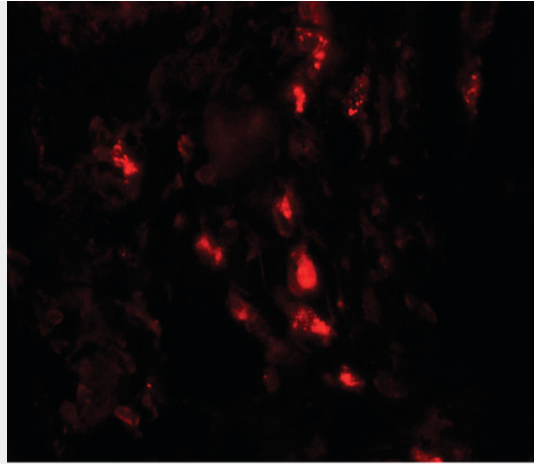
## ARSB / Arylsulfatase B Antibody (C-Terminus) - Images



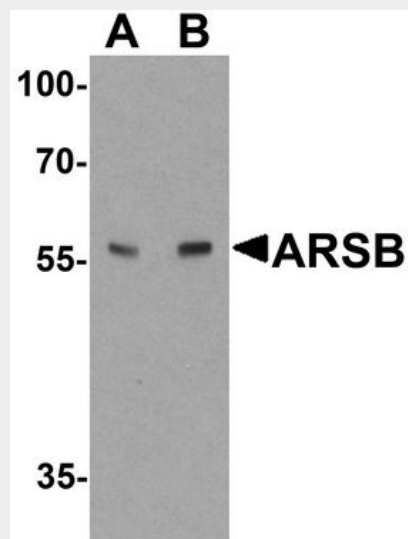
Anti-ARSB / Arylsulfatase B antibody IHC staining of human kidney.



Anti-ARSB / Arylsulfatase B antibody IHC staining of human liver.



Immunofluorescence of ARSB in human lung tissue with ARSB antibody at 20 ug/ml.



Western blot analysis of ARSB in mouse lung tissue lysate with ARSB antibody at (A) 1 and (B) 2...

#### **ARSB / Arylsulfatase B Antibody (C-Terminus) - Background**

Removes sulfate groups from chondroitin-4-sulfate (C4S) and regulates its degradation (PubMed:19306108). Involved in the regulation of cell adhesion, cell migration and invasion in colonic epithelium (PubMed:19306108). In the central nervous system, is a regulator of neurite outgrowth and neuronal plasticity, acting through the control of sulfate glycosaminoglycans and neurocan levels (By similarity).

#### **ARSB / Arylsulfatase B Antibody (C-Terminus) - References**

- Peters C.,et al.J. Biol. Chem. 265:3374-3381(1990).
- Schuchman E.H.,et al.Genomics 6:149-158(1990).
- Modaressi S.,et al.Biol. Chem. Hoppe-Seyler 374:327-335(1993).
- Ota T.,et al.Nat. Genet. 36:40-45(2004).
- Schmutz J.,et al.Nature 431:268-274(2004).