

**SPP1 / Osteopontin Antibody (N-Terminus)**  
**Rabbit Polyclonal Antibody**  
**Catalog # ALS16768**

**Specification**

---

**SPP1 / Osteopontin Antibody (N-Terminus) - Product Information**

Application	IHC, IF, WB
Primary Accession	<a href="#">P10451</a>
Other Accession	<a href="#">6696</a>
Reactivity	Human, Mouse, Rat
Host	Rabbit
Clonality	Polyclonal
Isotype	IgG
Calculated MW	35423

**SPP1 / Osteopontin Antibody (N-Terminus) - Additional Information**

**Gene ID** 6696

**Other Names**

SPP1, BSPI, BNSP, Bone sialoprotein 1, ETA-1, Nephropontin, OPN, Secreted phosphoprotein 1, SPP-1, SPP1/CALPHA1 fusion, Urinary stone protein, Uropontin, Osteopontin, Bone sialoprotein I

**Target/Specificity**

SPP1 antibody is human, mouse and rat reactive. Multiple isoforms of SPP1 are known to exist.

**Reconstitution & Storage**

PBS, 0.02% sodium azide. Long term: -20°C; Short term: +4°C. Avoid repeat freeze-thaw cycles.

**Precautions**

SPP1 / Osteopontin Antibody (N-Terminus) is for research use only and not for use in diagnostic or therapeutic procedures.

**SPP1 / Osteopontin Antibody (N-Terminus) - Protein Information**

**Name** SPP1

**Synonyms** BNSP, OPN

**Function**

Major non-collagenous bone protein that binds tightly to hydroxyapatite. Appears to form an integral part of the mineralized matrix. Probably important to cell-matrix interaction.

**Cellular Location**

Secreted

**Tissue Location**

Detected in cerebrospinal fluid and urine (at protein level) (PubMed:25326458, PubMed:36213313,

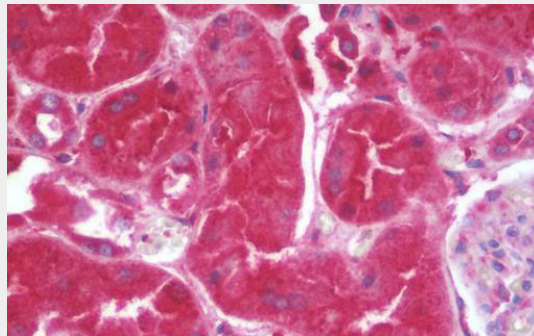
PubMed:37453717) Bone. Found in plasma.

### **SPP1 / Osteopontin Antibody (N-Terminus) - Protocols**

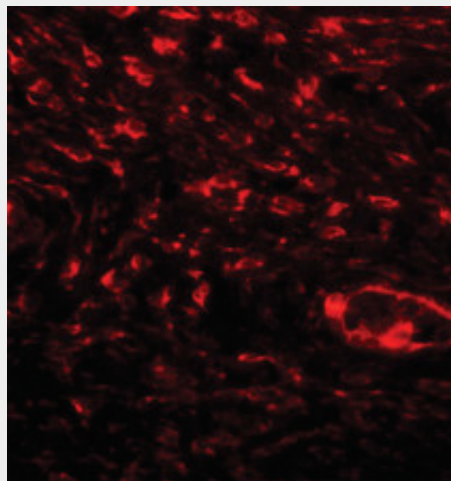
Provided below are standard protocols that you may find useful for product applications.

- [Western Blot](#)
- [Blocking Peptides](#)
- [Dot Blot](#)
- [Immunohistochemistry](#)
- [Immunofluorescence](#)
- [Immunoprecipitation](#)
- [Flow Cytometry](#)
- [Cell Culture](#)

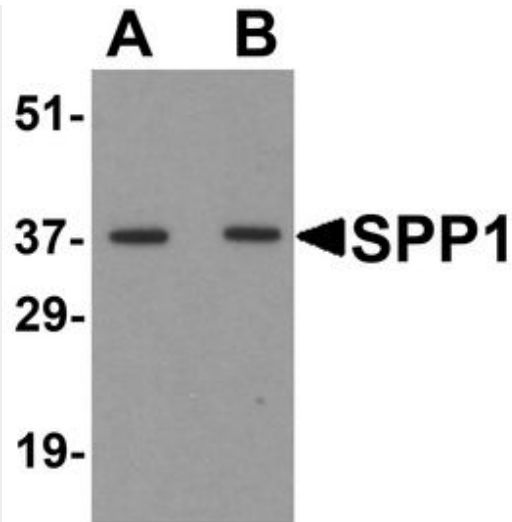
### **SPP1 / Osteopontin Antibody (N-Terminus) - Images**



Anti-SPP1 / Osteopontin antibody IHC staining of human kidney.



Immunofluorescence of SPP1 in human bladder tissue with SPP1 antibody at 20 ug/ml.



Western blot analysis of SPP1 in human bladder tissue lysate with SPP1 antibody at (A) 1 and (B)...

#### **SPP1 / Osteopontin Antibody (N-Terminus) - Background**

Binds tightly to hydroxyapatite. Appears to form an integral part of the mineralized matrix. Probably important to cell-matrix interaction.

#### **SPP1 / Osteopontin Antibody (N-Terminus) - References**

Kiefer M.C., et al. *Nucleic Acids Res.* 17:3306-3306(1989).  
Young M.F., et al. *Genomics* 7:491-502(1990).  
Shiraga H., et al. *Proc. Natl. Acad. Sci. U.S.A.* 89:426-430(1992).  
Crosby A.H., et al. *Genomics* 27:155-160(1995).  
Hijiya N., et al. *Biochem. J.* 303:255-262(1994).