

BRAF / B-Raf Antibody (Internal)
Rabbit Polyclonal Antibody
Catalog # ALS16763**Specification**

BRAF / B-Raf Antibody (Internal) - Product Information

Application	IHC, IF, WB
Primary Accession	P15056
Other Accession	673
Reactivity	Human, Mouse, Rat
Host	Rabbit
Clonality	Polyclonal
Isotype	IgG
Calculated MW	84437

BRAF / B-Raf Antibody (Internal) - Additional Information**Gene ID** 673**Other Names**

BRAF, 94 kDa B-raf protein, B-raf, BRAF1, B Raf, Proto-oncogene B-Raf, p94, B-RAF1, NS7, ONCOGENE BRAF, RAFB1

Target/Specificity

At least two isoforms of B-raf are known to exist; this antibody will detect both isoforms. This antibody will not cross-react with C-raf.

Reconstitution & Storage

PBS, 0.02% sodium azide. Long term: -20°C; Short term: +4°C. Avoid repeat freeze-thaw cycles.

Precautions

BRAF / B-Raf Antibody (Internal) is for research use only and not for use in diagnostic or therapeutic procedures.

BRAF / B-Raf Antibody (Internal) - Protein Information**Name** BRAF ([HGNC:1097](#))**Synonyms** BRAF1, RAFB1**Function**Protein kinase involved in the transduction of mitogenic signals from the cell membrane to the nucleus (Probable). Phosphorylates MAP2K1, and thereby activates the MAP kinase signal transduction pathway (PubMed:[21441910](http://www.uniprot.org/citations/21441910), PubMed:[29433126](http://www.uniprot.org/citations/29433126)). Phosphorylates PFKFB2 (PubMed:[36402789](http://www.uniprot.org/citations/36402789)). May play a role in the postsynaptic responses of hippocampal neurons (PubMed:[36402789](#)).

href="http://www.uniprot.org/citations/1508179" target="_blank">1508179).

Cellular Location

Nucleus. Cytoplasm. Cell membrane. Note=Colocalizes with RGS14 and RAF1 in both the cytoplasm and membranes.

Tissue Location

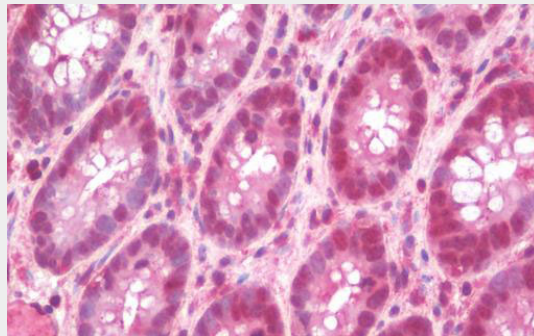
Brain and testis.

BRAF / B-Raf Antibody (Internal) - Protocols

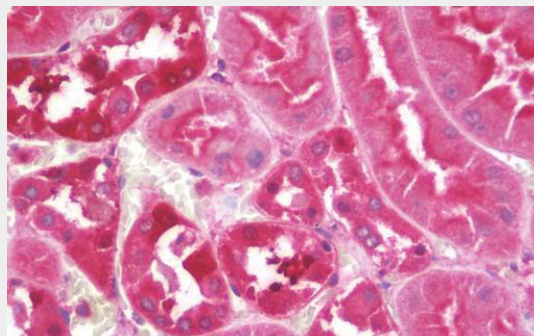
Provided below are standard protocols that you may find useful for product applications.

- [Western Blot](#)
- [Blocking Peptides](#)
- [Dot Blot](#)
- [Immunohistochemistry](#)
- [Immunofluorescence](#)
- [Immunoprecipitation](#)
- [Flow Cytometry](#)
- [Cell Culture](#)

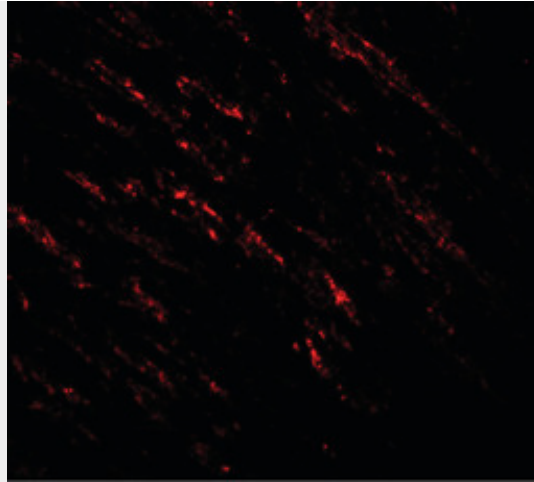
BRAF / B-Raf Antibody (Internal) - Images



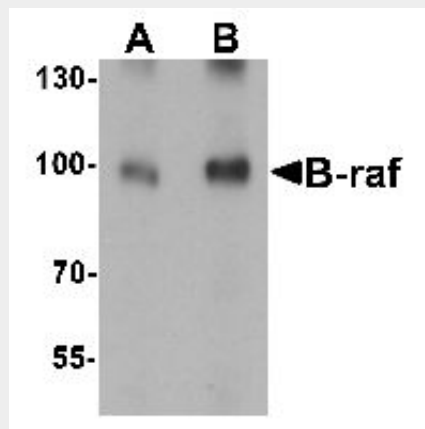
Anti-BRAF / B-Raf antibody IHC staining of human colon.



Anti-BRAF / B-Raf antibody IHC staining of human kidney.



Immunofluorescence of B-raf in human small intestine tissue with B-raf antibody at 20 ug/ml.



Western blot analysis of B-raf in human brain tissue lysate with B-raf antibody at (A) 1 and (B)...

BRAF / B-Raf Antibody (Internal) - Background

Protein kinase involved in the transduction of mitogenic signals from the cell membrane to the nucleus. May play a role in the postsynaptic responses of hippocampal neuron. Phosphorylates MAP2K1, and thereby contributes to the MAP kinase signal transduction pathway.

BRAF / B-Raf Antibody (Internal) - References

- Stephens R.M., et al. *Mol. Cell. Biol.* 12:3733-3742(1992).
- Albert S., et al. Submitted (JAN-2004) to the EMBL/GenBank/DDBJ databases.
- Scherer S.W., et al. *Science* 300:767-772(2003).
- Hillier L.W., et al. *Nature* 424:157-164(2003).
- Eychene A., et al. *Oncogene* 7:1657-1660(1992).