

**KREMEN1 / KREMEN-1 Antibody (C-Terminus)**  
**Rabbit Polyclonal Antibody**  
**Catalog # ALS16750****Specification**

---

**KREMEN1 / KREMEN-1 Antibody (C-Terminus) - Product Information**

Application	IHC, IF, WB
Primary Accession	<a href="#">O96MU8</a>
Other Accession	<a href="#">83999</a>
Reactivity	Human, Mouse, Rat
Host	Rabbit
Clonality	Polyclonal
Isotype	IgG
Calculated MW	51744

**KREMEN1 / KREMEN-1 Antibody (C-Terminus) - Additional Information**

**Gene ID** 83999

**Other Names**

KREMEN1, Dickkopf receptor, KREMEN, Kremen protein 1, KRM1, KREMEM1

**Target/Specificity**

Three isoforms of KREMEN1 exists as a result of alternative splicing event.

**Reconstitution & Storage**

PBS, 0.02% sodium azide. Long term: -20°C; Short term: +4°C. Avoid repeat freeze-thaw cycles.

**Precautions**

KREMEN1 / KREMEN-1 Antibody (C-Terminus) is for research use only and not for use in diagnostic or therapeutic procedures.

**KREMEN1 / KREMEN-1 Antibody (C-Terminus) - Protein Information**

**Name** KREMEN1

**Synonyms** KREMEN, KRM1

**Function**

Receptor for Dickkopf proteins. Cooperates with DKK1/2 to inhibit Wnt/beta-catenin signaling by promoting the endocytosis of Wnt receptors LRP5 and LRP6. In the absence of DKK1, potentiates Wnt-beta- catenin signaling by maintaining LRP5 or LRP6 at the cell membrane. Can trigger apoptosis in a Wnt-independent manner and this apoptotic activity is inhibited upon binding of the ligand DKK1. Plays a role in limb development; attenuates Wnt signaling in the developing limb to allow normal limb patterning and can also negatively regulate bone formation. Modulates cell fate decisions in the developing cochlea with an inhibitory role in hair cell fate specification.

**Cellular Location**

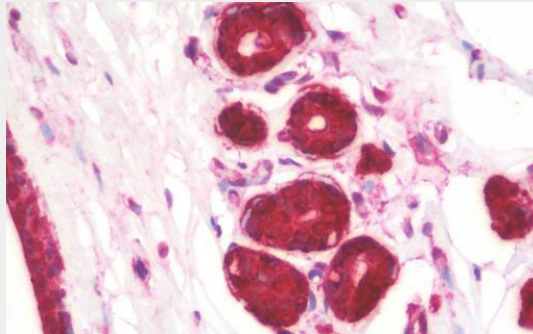
Cell membrane {ECO:0000250|UniProtKB:Q99N43}; Single-pass type I membrane protein

### **KREMEN1 / KREMEN-1 Antibody (C-Terminus) - Protocols**

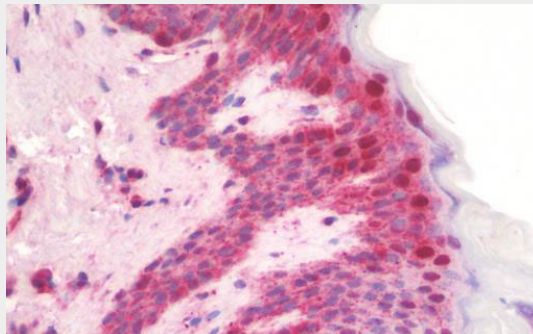
Provided below are standard protocols that you may find useful for product applications.

- [Western Blot](#)
- [Blocking Peptides](#)
- [Dot Blot](#)
- [Immunohistochemistry](#)
- [Immunofluorescence](#)
- [Immunoprecipitation](#)
- [Flow Cytometry](#)
- [Cell Culture](#)

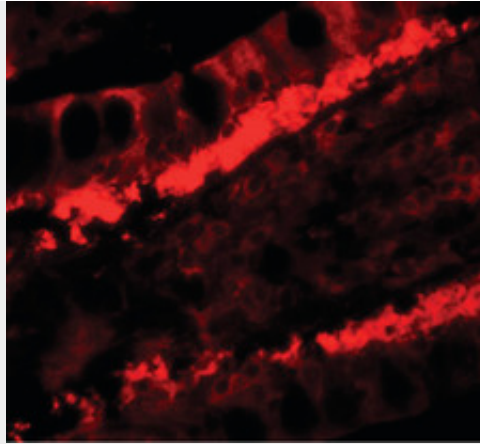
### **KREMEN1 / KREMEN-1 Antibody (C-Terminus) - Images**



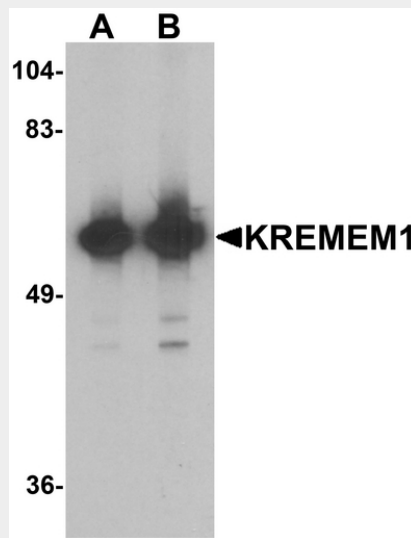
Anti-KREMEN1 / KREMEN-1 antibody IHC staining of human breast.



Anti-KREMEN1 / KREMEN-1 antibody IHC staining of human skin.



Immunofluorescence of KREMEN1 in human small intestine tissue with KREMEN1 antibody at 20 ug/ml.



Western blot analysis of KREMEN1 in rat small intestine tissue lysate with KREMEN1 antibody at...

#### **KREMEN1 / KREMEN-1 Antibody (C-Terminus) - Background**

Receptor for Dickkopf protein. Cooperates with Dickkopf to block Wnt/beta-catenin signaling (By similarity).

#### **KREMEN1 / KREMEN-1 Antibody (C-Terminus) - References**

- Nakamura T.,et al.Submitted (OCT-2001) to the EMBL/GenBank/DDBJ databases.
- Ota T.,et al.Nat. Genet. 36:40-45(2004).
- Dunham I.,et al.Nature 402:489-495(1999).
- Mural R.J.,et al.Submitted (JUL-2005) to the EMBL/GenBank/DDBJ databases.