

**JAKMIP1 Antibody (Internal)**  
**Rabbit Polyclonal Antibody**  
**Catalog # ALS16741****Specification**

---

**JAKMIP1 Antibody (Internal) - Product Information**

Application	<b>IHC, WB</b>
Primary Accession	<a href="#">O96N16</a>
Other Accession	<a href="#">152789</a>
Reactivity	<b>Human, Mouse, Rat</b>
Host	<b>Rabbit</b>
Clonality	<b>Polyclonal</b>
Isotype	<b>IgG</b>
Calculated MW	<b>73209</b>

**JAKMIP1 Antibody (Internal) - Additional Information**

**Gene ID** 152789

**Other Names**

JAKMIP1, JAMIP1, Gababrbp, Marlin-1, MARLIN1

**Target/Specificity**

Multiple isoforms of JAKMIP1 are known to exist. JAKMIP1 antibody is predicted to not cross-react with JAKMIP2.

**Reconstitution & Storage**

PBS, 0.02% sodium azide. Long term: -20°C; Short term: +4°C. Avoid repeat freeze-thaw cycles.

**Precautions**

JAKMIP1 Antibody (Internal) is for research use only and not for use in diagnostic or therapeutic procedures.

**JAKMIP1 Antibody (Internal) - Protein Information**

**Name** JAKMIP1

**Synonyms** GABABRBP, JAMIP1, MARLIN1

**Function**

Associates with microtubules and may play a role in the microtubule-dependent transport of the GABA-B receptor. May play a role in JAK1 signaling and regulate microtubule cytoskeleton rearrangements.

**Cellular Location**

Cytoplasm, cytoskeleton. Membrane; Peripheral membrane protein. Note=Colocalizes with the microtubule network Localizes to the cell body and neurites of hippocampal neurons where it accumulates in granules. Localizes to the tail and to a lower extent to the head of sperm cells

### Tissue Location

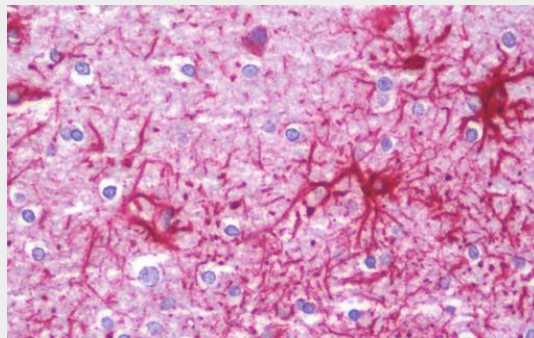
Predominantly expressed in neural tissues and lymphoid cells (at protein level). Isoform 2, isoform 3 and isoform 4 are specifically expressed in brain and retina. Isoform 1 and isoform 5 are also detected in liver, lung and skeletal muscle. Also detected in testis and to a lower extent spleen and intestine

### JAKMIP1 Antibody (Internal) - Protocols

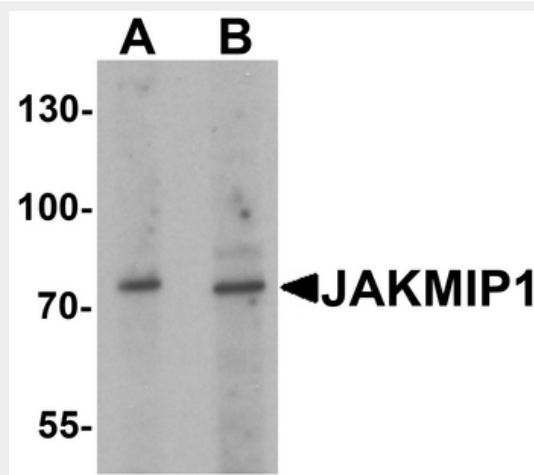
Provided below are standard protocols that you may find useful for product applications.

- [Western Blot](#)
- [Blocking Peptides](#)
- [Dot Blot](#)
- [Immunohistochemistry](#)
- [Immunofluorescence](#)
- [Immunoprecipitation](#)
- [Flow Cytometry](#)
- [Cell Culture](#)

### JAKMIP1 Antibody (Internal) - Images



Anti-JAKMIP1 antibody IHC staining of human brain, cortex.



Western blot analysis of JAKMIP1 in rat brain tissue lysate with JAKMIP1 antibody at (A) 1 and...

### JAKMIP1 Antibody (Internal) - Background

Associates with microtubules and may play a role in the microtubule-dependent transport of the

GABA-B receptor. May play a role in JAK1 signaling and regulate microtubule cytoskeleton rearrangements.

#### **JAKMIP1 Antibody (Internal) - References**

Couve A., et al. J. Biol. Chem. 279:13934-13943(2004).

Costa V., et al. Gene 402:1-8(2007).

Ota T., et al. Nat. Genet. 36:40-45(2004).

Hillier L.W., et al. Nature 434:724-731(2005).

Mural R.J., et al. Submitted (SEP-2005) to the EMBL/GenBank/DDBJ databases.