

**CD1C Antibody (clone 4C7)**  
**Mouse Monoclonal Antibody**  
**Catalog # ALS16736**

**Specification**

---

**CD1C Antibody (clone 4C7) - Product Information**

Application	IHC, IF, WB
Primary Accession	<a href="#">P29017</a>
Other Accession	<a href="#">911</a>
Reactivity	Human
Host	Mouse
Clonality	Monoclonal
Isotype	IgG1
Calculated MW	37654

**CD1C Antibody (clone 4C7) - Additional Information**

**Gene ID** [911](#)

**Other Names**

CD1C, BDCA1, CD1, CD1c molecule, CD1C antigen, c polypeptide, CD1c antigen, R7

**Target/Specificity**

Human CD1C

**Reconstitution & Storage**

PBS, pH 7.3, 1% BSA, 50% glycerol, 0.02% sodium azide. Store at -20°C. Minimize freezing and thawing.

**Precautions**

CD1C Antibody (clone 4C7) is for research use only and not for use in diagnostic or therapeutic procedures.

**CD1C Antibody (clone 4C7) - Protein Information**

**Name** CD1C

**Function**

Antigen-presenting protein that binds self and non-self lipid and glycolipid antigens and presents them to T-cell receptors on natural killer T-cells.

**Cellular Location**

Cell membrane; Single-pass type I membrane protein. Endosome membrane; Single-pass type I membrane protein Lysosome. Note=Subject to intracellular trafficking between the cell membrane and endosomes

**Tissue Location**

Expressed on cortical thymocytes, on certain T-cell leukemias, and in various other tissues

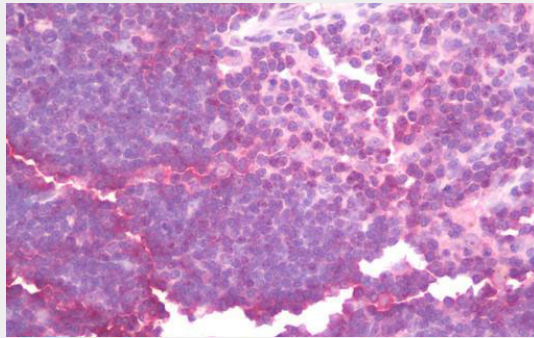
**Volume**  
50  $\mu$ l

### **CD1C Antibody (clone 4C7) - Protocols**

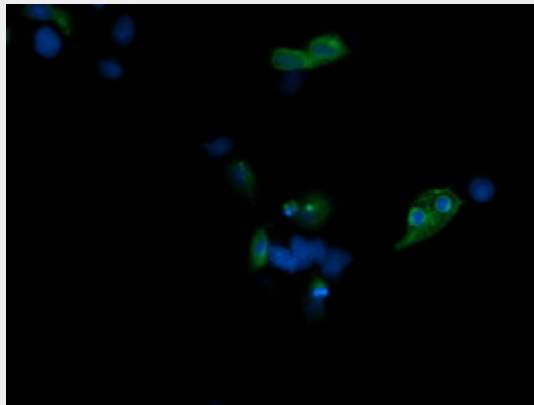
Provided below are standard protocols that you may find useful for product applications.

- [Western Blot](#)
- [Blocking Peptides](#)
- [Dot Blot](#)
- [Immunohistochemistry](#)
- [Immunofluorescence](#)
- [Immunoprecipitation](#)
- [Flow Cytometry](#)
- [Cell Culture](#)

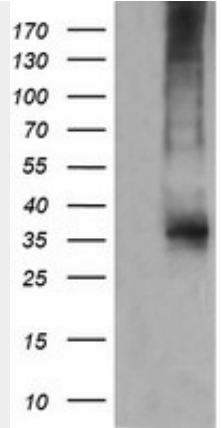
### **CD1C Antibody (clone 4C7) - Images**



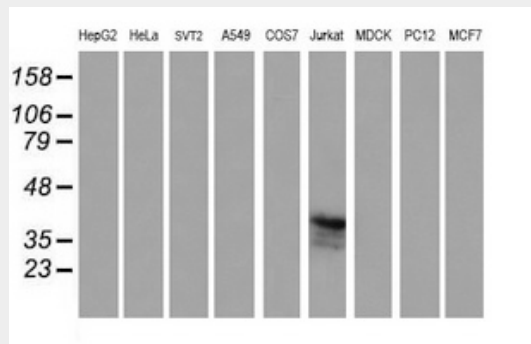
Anti-CD1C antibody IHC staining of human thymus.



Anti-CD1C mouse monoclonal antibody immunofluorescent staining of COS7 cells transiently...



HEK293T cells were transfected with the pCMV6-ENTRY control (Left lane) or pCMV6-ENTRY CD1C...



Western blot of extracts (35 ug) from 9 different cell lines by using g anti-CD1C monoclonal...

**CD1C Antibody (clone 4C7) - Background**

Antigen-presenting protein that binds self and non-self lipid and glycolipid antigens and presents them to T-cell receptors on natural killer T-cells.

**CD1C Antibody (clone 4C7) - References**

Martin L.H.,et al.Proc. Natl. Acad. Sci. U.S.A. 84:9189-9193(1987).  
 Aruffo A.,et al.J. Immunol. 143:1723-1730(1989).  
 Ebert L.,et al.Submitted (JUN-2004) to the EMBL/GenBank/DDBJ databases.  
 Gregory S.G.,et al.Nature 441:315-321(2006).  
 Han M.,et al.Tissue Antigens 54:122-127(1999).