

MAGEA3 Antibody (clone 4E2)
Mouse Monoclonal Antibody
Catalog # ALS16729**Specification**

MAGEA3 Antibody (clone 4E2) - Product Information

Application	IHC-P, WB
Primary Accession	P43357
Other Accession	4102
Reactivity	Human
Host	Mouse
Clonality	Monoclonal
Isotype	IgG2a
Calculated MW	34747

MAGEA3 Antibody (clone 4E2) - Additional Information**Gene ID** 4102**Other Names**

MAGEA3, Antigen MZ2-D, Cancer/testis antigen 1.3, CT1.3, HYPD, MAGE-3 antigen, Melanoma-associated antigen 3, HIP8, MAGE3, Melanoma antigen family A, 3

Target/Specificity

Human MAGEA3

Reconstitution & Storage

PBS, pH 7.3, 1% BSA, 50% glycerol, 0.02% sodium azide. Store at -20°C. Minimize freezing and thawing.

Precautions

MAGEA3 Antibody (clone 4E2) is for research use only and not for use in diagnostic or therapeutic procedures.

MAGEA3 Antibody (clone 4E2) - Protein Information**Name** MAGEA3 {ECO:0000303|PubMed:29779948, ECO:0000312|HGNC:HGNC:6801}**Function**

Activator of ubiquitin ligase activity of RING-type zinc finger-containing E3 ubiquitin-protein ligases that acts as a repressor of autophagy (PubMed:20864041, PubMed:31267705). May enhance ubiquitin ligase activity of TRIM28 and stimulate p53/TP53 ubiquitination by TRIM28. Proposed to act through recruitment and/or stabilization of the Ubl-conjugating enzyme (E2) at the E3:substrate complex (PubMed:17942928, PubMed:20864041). May play a role in embryonal development and tumor

transformation or aspects of tumor progression (PubMed:17942928, PubMed:20864041). In vitro promotes cell viability in melanoma cell lines (PubMed:17942928). Antigen recognized on a melanoma by autologous cytolytic T-lymphocytes (PubMed:8113684).

Tissue Location

Expressed in many tumors of several types, such as melanoma, head and neck squamous cell carcinoma, lung carcinoma and breast carcinoma, but not in normal tissues except for testes and placenta. Never expressed in kidney tumors, Leukemias and lymphomas

Volume

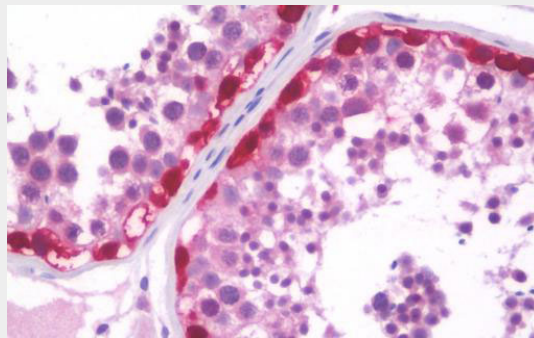
50 µl

MAGEA3 Antibody (clone 4E2) - Protocols

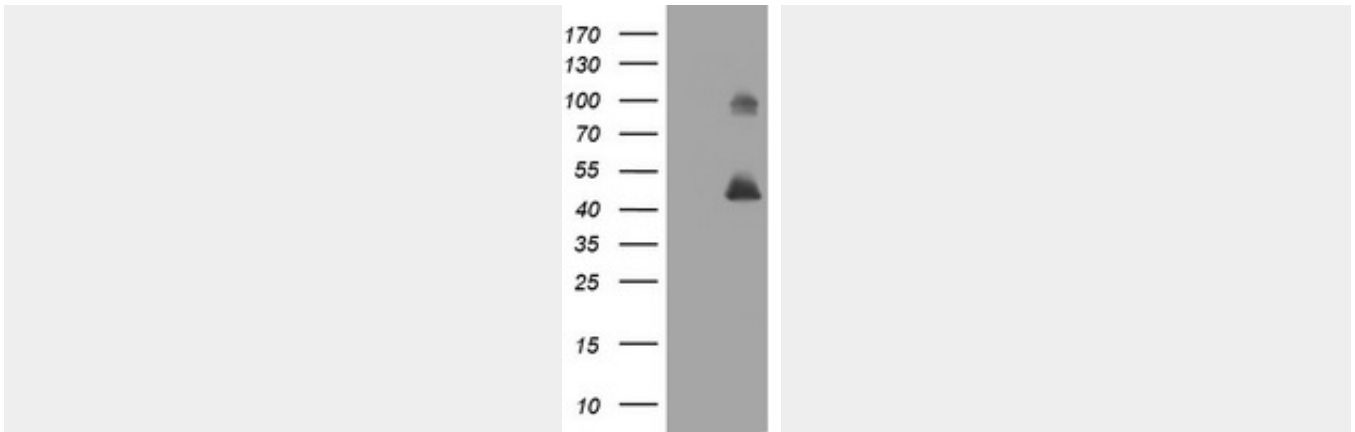
Provided below are standard protocols that you may find useful for product applications.

- [Western Blot](#)
- [Blocking Peptides](#)
- [Dot Blot](#)
- [Immunohistochemistry](#)
- [Immunofluorescence](#)
- [Immunoprecipitation](#)
- [Flow Cytometry](#)
- [Cell Culture](#)

MAGEA3 Antibody (clone 4E2) - Images



Anti-MAGEA3 antibody IHC staining of human testis.



HEK293T cells were transfected with the pCMV6-ENTRY control (Left lane) or pCMV6-ENTRY MAGEA3...

MAGEA3 Antibody (clone 4E2) - Background

Proposed to enhance ubiquitin ligase activity of RING- type zinc finger-containing E3 ubiquitin-protein ligases. May enhance ubiquitin ligase activity of TRIM28 and stimulate p53/TP53 ubiquitination by TRIM28. Proposed to act through recruitment and/or stabilization of the Ubl-conjugating enzyme (E2) at the E3:substrate complex. May play a role in embryonal development and tumor transformation or aspects of tumor progression. In vitro promotes cell viability in melanoma cell lines. Antigen recognized on a melanoma by autologous cytolytic T-lymphocytes.

MAGEA3 Antibody (clone 4E2) - References

- Gaugler B., et al. J. Exp. Med. 179:921-930(1994).
- Ding M., et al. Biochem. Biophys. Res. Commun. 202:549-555(1994).
- Ebert L., et al. Submitted (JUN-2004) to the EMBL/GenBank/DDBJ databases.
- Ota T., et al. Nat. Genet. 36:40-45(2004).
- Mallon A.-M., et al. Genome Res. 10:758-775(2000).