

**KRT18 / CK18 / Cytokeratin 18 Antibody (clone C-04, Biotin)**  
**Mouse Monoclonal Antibody**  
**Catalog # ALS16695****Specification**

---

**KRT18 / CK18 / Cytokeratin 18 Antibody (clone C-04, Biotin) - Product Information**

Application	IHC
Primary Accession	<a href="#">P05783</a>
Other Accession	<a href="#">3875</a>
Reactivity	Human
Host	Mouse
Clonality	Monoclonal
Isotype	IgG1
Calculated MW	48058

**KRT18 / CK18 / Cytokeratin 18 Antibody (clone C-04, Biotin) - Additional Information****Gene ID** 3875**Other Names**

KRT18, CK-18, Cytokeratin 18, Cytokeratin-18, K18, Keratin 18, CYK18, Keratin-18

**Target/Specificity**

Reacts with Cytokeratin 18 (45 kD). Cytokeratins are a member of intermediate filaments subfamily represented in epithelial tissues.

**Reconstitution & Storage**

PBS, 15 mM sodium azide, approx., pH 7.4. Store at 2-8°C. Do not freeze.

**Precautions**

KRT18 / CK18 / Cytokeratin 18 Antibody (clone C-04, Biotin) is for research use only and not for use in diagnostic or therapeutic procedures.

**KRT18 / CK18 / Cytokeratin 18 Antibody (clone C-04, Biotin) - Protein Information****Name** KRT18**Synonyms** CYK18**Function**

Involved in the uptake of thrombin-antithrombin complexes by hepatic cells (By similarity). When phosphorylated, plays a role in filament reorganization. Involved in the delivery of mutated CFTR to the plasma membrane. Together with KRT8, is involved in interleukin-6 (IL-6)-mediated barrier protection.

**Cellular Location**

Nucleus matrix {ECO:0000250|UniProtKB:Q5BJY9}. Cytoplasm, perinuclear region. Nucleus, nucleolus. Cytoplasm {ECO:0000250|UniProtKB:Q5BJY9}

### Tissue Location

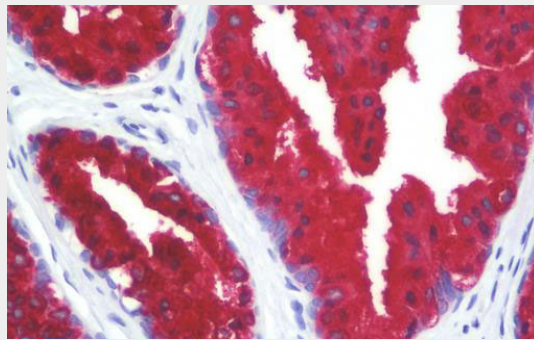
Expressed in colon, placenta, liver and very weakly in exocervix. Increased expression observed in lymph nodes of breast carcinoma.

### KRT18 / CK18 / Cytokeratin 18 Antibody (clone C-04, Biotin) - Protocols

Provided below are standard protocols that you may find useful for product applications.

- [Western Blot](#)
- [Blocking Peptides](#)
- [Dot Blot](#)
- [Immunohistochemistry](#)
- [Immunofluorescence](#)
- [Immunoprecipitation](#)
- [Flow Cytometry](#)
- [Cell Culture](#)

### KRT18 / CK18 / Cytokeratin 18 Antibody (clone C-04, Biotin) - Images



Anti-KRT18 / CK18 / Cytokeratin 18 antibody IHC staining of human prostate.

### KRT18 / CK18 / Cytokeratin 18 Antibody (clone C-04, Biotin) - Background

Involved in the uptake of thrombin-antithrombin complexes by hepatic cells (By similarity). When phosphorylated, plays a role in filament reorganization. Involved in the delivery of mutated CFTR to the plasma membrane. Together with KRT8, is involved in interleukin-6 (IL-6)-mediated barrier protection.

### KRT18 / CK18 / Cytokeratin 18 Antibody (clone C-04, Biotin) - References

- Oshima R.G., et al. Differentiation 33:61-68(1986).  
Kim J.W., et al. Submitted (SEP-2004) to the EMBL/GenBank/DDBJ databases.  
Kalnine N., et al. Submitted (OCT-2004) to the EMBL/GenBank/DDBJ databases.  
Suzuki Y., et al. Submitted (APR-2005) to the EMBL/GenBank/DDBJ databases.  
Kulesh D.A., et al. Mol. Cell. Biol. 8:1540-1550(1988).