

KCNG2 Antibody (aa321-370)
Rabbit Polyclonal Antibody
Catalog # ALS16676**Specification**

KCNG2 Antibody (aa321-370) - Product Information

Application	IHC, WB
Primary Accession	O9UJ96
Other Accession	26251
Reactivity	Human, Mouse, Rat
Host	Rabbit
Clonality	Polyclonal
Isotype	IgG
Calculated MW	51240

KCNG2 Antibody (aa321-370) - Additional Information**Gene ID** 26251**Other Names**

KCNG2, KCNF2, KV6.2

Target/Specificity

KCNG2 Antibody detects endogenous levels of total KCNG2 protein.

Reconstitution & StoragePBS (without Mg²⁺, Ca²⁺), pH 7.4, 150 mM sodium chloride, 0.02% sodium azide, 50% glycerol.
Store at -20°C for up to one year.**Precautions**

KCNG2 Antibody (aa321-370) is for research use only and not for use in diagnostic or therapeutic procedures.

KCNG2 Antibody (aa321-370) - Protein Information**Name** KCNG2 ([HGNC:6249](#))**Function**

Regulatory alpha-subunit of the voltage-gated potassium (Kv) channel which, when coassembled with KCNB1, can modulate the kinetics and conductance-voltage relationship (PubMed:10551266). Modulates channel activity by shifting the threshold and the half-maximal activation to more negative values (Probable). Potassium channel subunit that does not form functional channels by itself (Probable).

Cellular Location

Cell membrane {ECO:0000250|UniProtKB:Q14721}; Multi-pass membrane protein {ECO:0000250|UniProtKB:P63142}

Tissue Location

Highly expressed in heart, liver, skeletal muscle, kidney and pancreas. Detected at low levels in brain, lung and placenta.

Volume

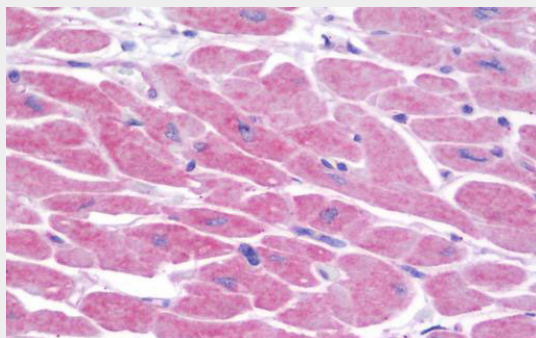
50 μ l

KCNG2 Antibody (aa321-370) - Protocols

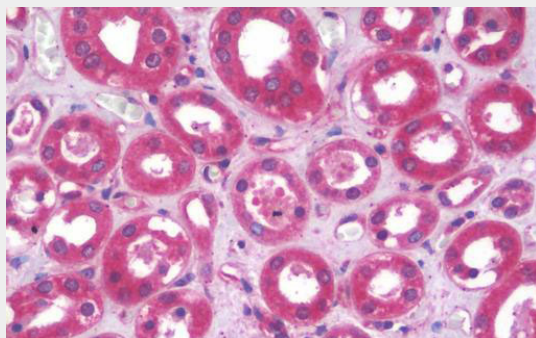
Provided below are standard protocols that you may find useful for product applications.

- [Western Blot](#)
- [Blocking Peptides](#)
- [Dot Blot](#)
- [Immunohistochemistry](#)
- [Immunofluorescence](#)
- [Immunoprecipitation](#)
- [Flow Cytometry](#)
- [Cell Culture](#)

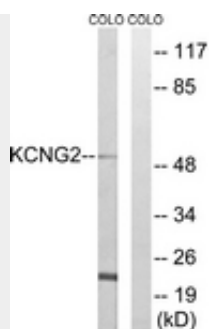
KCNG2 Antibody (aa321-370) - Images



Anti-KCNG2 antibody IHC staining of human heart.



Anti-KCNG2 antibody IHC staining of human kidney.



Western blot of extracts from COLO cells, using KCNG2 Antibody.

KCNG2 Antibody (aa321-370) - Background

Potassium channel subunit. Modulates channel activity by shifting the threshold and the half-maximal activation to more negative values.

KCNG2 Antibody (aa321-370) - References

Zhu X.-R., et al. Recept. Channels 6:337-350(1999).