

**RPS4X / SCAR Antibody (aa81-130)**  
**Rabbit Polyclonal Antibody**  
**Catalog # ALS16639**

**Specification**

---

**RPS4X / SCAR Antibody (aa81-130) - Product Information**

Application	IHC, IF, WB
Primary Accession	<a href="#">P62701</a>
Other Accession	<a href="#">6191</a>
Reactivity	Human, Mouse, Rat
Host	Rabbit
Clonality	Polyclonal
Isotype	IgG
Calculated MW	29598

**RPS4X / SCAR Antibody (aa81-130) - Additional Information**

**Gene ID** 6191

**Other Names**

RPS4X, CCG2, Cell cycle gene 2, Ribosomal protein S4, X-linked, RPS4, Single-copy abundant mRNA, Ribosomal protein S4X isoform, S4, SCAR, SCR10, DXS306

**Target/Specificity**

RPS4X Antibody detects endogenous levels of total RPS4X protein.

**Reconstitution & Storage**

PBS (without Mg<sup>2+</sup>, Ca<sup>2+</sup>), pH 7.4, 150 mM sodium chloride, 0.02% sodium azide, 50% glycerol. Store at -20°C for up to one year.

**Precautions**

RPS4X / SCAR Antibody (aa81-130) is for research use only and not for use in diagnostic or therapeutic procedures.

**RPS4X / SCAR Antibody (aa81-130) - Protein Information**

**Name** RPS4X ([HGNC:10424](#))

**Synonyms** CCG2, RPS4, SCAR

**Function**

Component of the small ribosomal subunit. The ribosome is a large ribonucleoprotein complex responsible for the synthesis of proteins in the cell (PubMed:<a href="http://www.uniprot.org/citations/23636399" target="\_blank">23636399</a>). Part of the small subunit (SSU) processome, first precursor of the small eukaryotic ribosomal subunit. During the assembly of the SSU processome in the nucleolus, many ribosome biogenesis factors, an RNA chaperone and ribosomal proteins associate with the nascent pre-rRNA and work in concert to generate RNA folding, modifications, rearrangements and cleavage as well as targeted

degradation of pre-ribosomal RNA by the RNA exosome (PubMed:<a href="http://www.uniprot.org/citations/34516797" target="\_blank">34516797</a>).

#### Cellular Location

Cytoplasm. Nucleus, nucleolus. Note=Localized in cytoplasmic mRNP granules containing untranslated mRNAs.

#### Volume

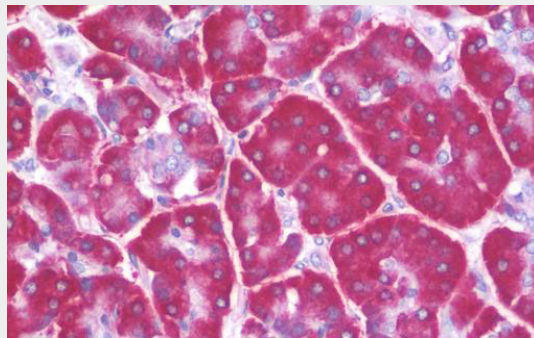
50  $\mu$ l

#### RPS4X / SCAR Antibody (aa81-130) - Protocols

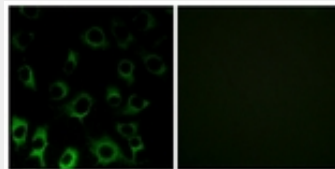
Provided below are standard protocols that you may find useful for product applications.

- [Western Blot](#)
- [Blocking Peptides](#)
- [Dot Blot](#)
- [Immunohistochemistry](#)
- [Immunofluorescence](#)
- [Immunoprecipitation](#)
- [Flow Cytometry](#)
- [Cell Culture](#)

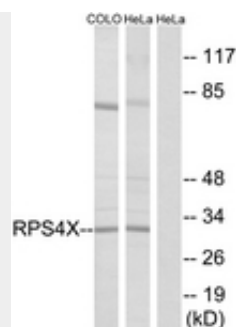
#### RPS4X / SCAR Antibody (aa81-130) - Images



Anti-RPS4X / SCAR antibody IHC staining of human pancreas.



Immunofluorescence of HUVEC cells, using RPS4X Antibody.



Western blot of extracts from HeLa/COLO cells, using RPS4X Antibody.

#### **RPS4X / SCAR Antibody (aa81-130) - References**

Fisher E.M.C.,et al.Cell 63:1205-1218(1990).

Watanabe M.,et al.J. Cell Sci. 100:35-43(1991).

Zuo L.,et al.Submitted (JAN-1998) to the EMBL/GenBank/DDBJ databases.

Ebert L.,et al.Submitted (JUN-2004) to the EMBL/GenBank/DDBJ databases.

Dmitrenko V.V.,et al.Submitted (APR-1996) to the EMBL/GenBank/DDBJ databases.