

GSTP1 / GST Pi Antibody
Rabbit Polyclonal Antibody
Catalog # ALS16623**Specification**

GSTP1 / GST Pi Antibody - Product Information

Application	IHC
Primary Accession	P09211
Other Accession	2950
Reactivity	Human, Mouse, Rat
Host	Rabbit
Clonality	Polyclonal
Isotype	IgG
Calculated MW	23356

GSTP1 / GST Pi Antibody - Additional Information**Gene ID** 2950**Other Names**

GSTP1, Deafness, X-linked 7, DFN7, GSTP1-1, Glutathione S-transferase P, GST Pi, GSTP, FAEES3, Glutathione S-transferase pi 1, GST class-pi, GST3, PI

Target/Specificity

Rat GSTP1 / GST Pi

Reconstitution & Storage

PBS, pH 7.2, 50% glycerol. Store at -20°C.

Precautions

GSTP1 / GST Pi Antibody is for research use only and not for use in diagnostic or therapeutic procedures.

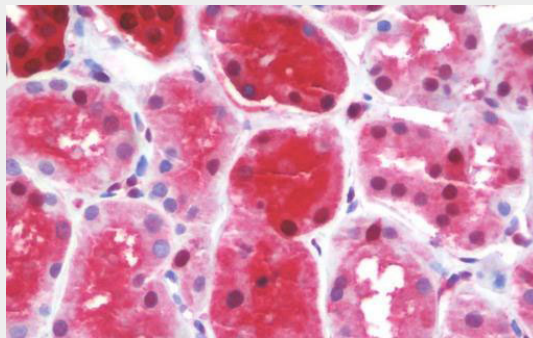
GSTP1 / GST Pi Antibody - Protein Information**Name** GSTP1 ([HGNC:4638](#))**Synonyms** FAEES3, GST3**Function**Conjugation of reduced glutathione to a wide number of exogenous and endogenous hydrophobic electrophiles. Involved in the formation of glutathione conjugates of both prostaglandin A2 (PGA2) and prostaglandin J2 (PGJ2) (PubMed:<[a href="http://www.uniprot.org/citations/9084911" target="_blank">9084911](http://www.uniprot.org/citations/9084911)>). Participates in the formation of novel hepoxilin regioisomers (PubMed:<[a href="http://www.uniprot.org/citations/21046276" target="_blank">21046276](http://www.uniprot.org/citations/21046276)>). Negatively regulates CDK5 activity via p25/p35 translocation to prevent neurodegeneration.**Cellular Location**

Cytoplasm. Mitochondrion. Nucleus. Note=The 83 N-terminal amino acids function as an uncleaved transit peptide, and arginine residues within it are crucial for mitochondrial localization

Volume50 μ l**GSTP1 / GST Pi Antibody - Protocols**

Provided below are standard protocols that you may find useful for product applications.

- [Western Blot](#)
- [Blocking Peptides](#)
- [Dot Blot](#)
- [Immunohistochemistry](#)
- [Immunofluorescence](#)
- [Immunoprecipitation](#)
- [Flow Cytometry](#)
- [Cell Culture](#)

GSTP1 / GST Pi Antibody - Images

Anti-GSTP1 / GST Pi antibody IHC staining of human kidney.

GSTP1 / GST Pi Antibody - Background

Conjugation of reduced glutathione to a wide number of exogenous and endogenous hydrophobic electrophiles. Regulates negatively CDK5 activity via p25/p35 translocation to prevent neurodegeneration.

GSTP1 / GST Pi Antibody - References

- Kano T., et al. *Cancer Res.* 47:5626-5630(1987).
Cowell I.G., et al. *Biochem. J.* 255:79-83(1988).
Morrow C.S., et al. *Gene* 75:3-11(1989).
Moscow J.A., et al. *Cancer Res.* 49:1422-1428(1989).
Bora P.S., et al. Submitted (JUL-1994) to the EMBL/GenBank/DDBJ databases.