

**VWF / Von Willebrand Factor Antibody (FITC)**  
**Sheep Polyclonal Antibody**  
**Catalog # ALS16578****Specification**

---

**VWF / Von Willebrand Factor Antibody (FITC) - Product Information**

Application	IHC
Primary Accession	<a href="#">P04275</a>
Other Accession	<a href="#">7450</a>
Reactivity	Human
Host	Sheep
Clonality	Polyclonal
Isotype	IgG
Calculated MW	309265

**VWF / Von Willebrand Factor Antibody (FITC) - Additional Information****Gene ID** 7450**Other Names**

VWF, Coagulation factor VIII VWF, F8VWF, VWD, Von Willebrand factor

**Target/Specificity**

Human von Willebrand factor, a glycoprotein synthesized in endothelial cells and megakaryocytes which circulates in the blood associated with factor VIII in a non-covalent complex

**Reconstitution & Storage**

PBS, pH 7.2, 0.09% sodium azide. Short term 4 C, Long term -20 C, Product is photosensitive and should be protected from light. Avoid freeze-thaw cycles.

**Precautions**

VWF / Von Willebrand Factor Antibody (FITC) is for research use only and not for use in diagnostic or therapeutic procedures.

**VWF / Von Willebrand Factor Antibody (FITC) - Protein Information****Name** VWF**Synonyms** F8VWF**Function**

Important in the maintenance of hemostasis, it promotes adhesion of platelets to the sites of vascular injury by forming a molecular bridge between sub-endothelial collagen matrix and platelet- surface receptor complex GPIb-IX-V. Also acts as a chaperone for coagulation factor VIII, delivering it to the site of injury, stabilizing its heterodimeric structure and protecting it from premature clearance from plasma.

**Cellular Location**

Secreted. Secreted, extracellular space, extracellular matrix. Note=Localized to storage granules

#### **Tissue Location**

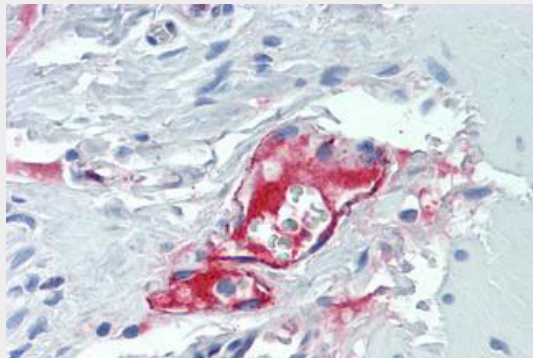
Plasma.

#### **VWF / Von Willebrand Factor Antibody (FITC) - Protocols**

Provided below are standard protocols that you may find useful for product applications.

- [Western Blot](#)
- [Blocking Peptides](#)
- [Dot Blot](#)
- [Immunohistochemistry](#)
- [Immunofluorescence](#)
- [Immunoprecipitation](#)
- [Flow Cytometry](#)
- [Cell Culture](#)

#### **VWF / Von Willebrand Factor Antibody (FITC) - Images**



Anti-VWF / Von Willebrand Factor antibody IHC staining of human vessel, serum.

#### **VWF / Von Willebrand Factor Antibody (FITC) - Background**

Important in the maintenance of hemostasis, it promotes adhesion of platelets to the sites of vascular injury by forming a molecular bridge between sub-endothelial collagen matrix and platelet-surface receptor complex GPIb-IX-V. Also acts as a chaperone for coagulation factor VIII, delivering it to the site of injury, stabilizing its heterodimeric structure and protecting it from premature clearance from plasma.

#### **VWF / Von Willebrand Factor Antibody (FITC) - References**

- Bonthron D., et al. *Nucleic Acids Res.* 14:7125-7128(1986).  
Mancuso D.J., et al. *J. Biol. Chem.* 264:19514-19527(1989).  
Scherer S.E., et al. *Nature* 440:346-351(2006).  
Mural R.J., et al. Submitted (SEP-2005) to the EMBL/GenBank/DDBJ databases.  
Verweij C.L., et al. *EMBO J.* 5:1839-1847(1986).