

**FCGR1A / CD64 Antibody (clone 3D3)**  
**Mouse Monoclonal Antibody**  
**Catalog # ALS16575****Specification**

---

**FCGR1A / CD64 Antibody (clone 3D3) - Product Information**

Application	IHC, IF, WB
Primary Accession	<a href="#">P12314</a>
Other Accession	<a href="#">2209</a>
Reactivity	Human
Host	Mouse
Clonality	Monoclonal
Isotype	IgG1
Calculated MW	42632

**FCGR1A / CD64 Antibody (clone 3D3) - Additional Information****Gene ID** 2209**Other Names**

FCGR1A, CD64A, CD64, CD64 antigen, FCG1, FcγRIa, IGFR1, IgG Fc receptor I, Fc-gamma receptor I A1, Fc-gamma RIA, FCGR1, Fc gamma receptor, Fc-gamma RI, FCRI

**Target/Specificity**

Human CD64

**Reconstitution & Storage**

PBS, pH 7.3, 1% BSA, 50% glycerol, 0.02% sodium azide. Store at -20°C. Minimize freezing and thawing.

**Precautions**

FCGR1A / CD64 Antibody (clone 3D3) is for research use only and not for use in diagnostic or therapeutic procedures.

**FCGR1A / CD64 Antibody (clone 3D3) - Protein Information****Name** FCGR1A**Synonyms** FCG1, FCGR1, IGFR1**Function**

High affinity receptor for the Fc region of immunoglobulins gamma. Functions in both innate and adaptive immune responses. Mediates IgG effector functions on monocytes triggering antibody-dependent cellular cytotoxicity (ADCC) of virus-infected cells.

**Cellular Location**

Cell membrane; Single-pass type I membrane protein Note=Stabilized at the cell membrane through interaction with FCER1G

### Tissue Location

Monocyte/macrophage specific.

### Volume

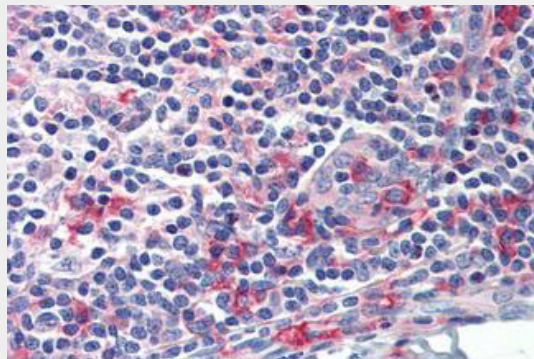
50  $\mu$ l

### FCGR1A / CD64 Antibody (clone 3D3) - Protocols

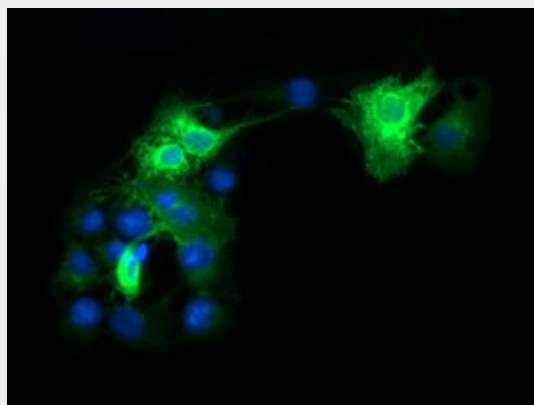
Provided below are standard protocols that you may find useful for product applications.

- [Western Blot](#)
- [Blocking Peptides](#)
- [Dot Blot](#)
- [Immunohistochemistry](#)
- [Immunofluorescence](#)
- [Immunoprecipitation](#)
- [Flow Cytometry](#)
- [Cell Culture](#)

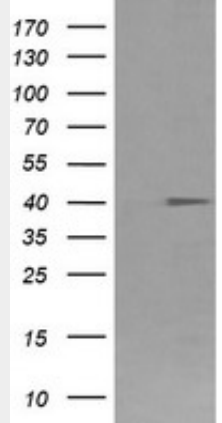
### FCGR1A / CD64 Antibody (clone 3D3) - Images



Anti-FCGR1A / CD64 antibody IHC staining of human tonsil.



Anti-FCGR1A mouse monoclonal antibody immunofluorescent staining of COS7 cells transiently...



HEK293T cells were transfected with the pCMV6-ENTRY control (Left lane) or pCMV6-ENTRY FCGR1A...

### **FCGR1A / CD64 Antibody (clone 3D3) - Background**

High affinity receptor for the Fc region of immunoglobulins gamma. Functions in both innate and adaptive immune responses.

### **FCGR1A / CD64 Antibody (clone 3D3) - References**

- Allen J.M.,et al.Nucleic Acids Res. 16:11824-11824(1988).
- Allen J.M.,et al.Science 243:378-381(1989).
- Porges A.J.,et al.J. Clin. Invest. 90:2102-2109(1992).
- Benech P.D.,et al.J. Exp. Med. 176:1115-1123(1992).
- Gregory S.G.,et al.Nature 441:315-321(2006).