

LHCGR / LHR / LH Receptor Antibody (aa622-699)
Rabbit Polyclonal Antibody
Catalog # ALS16565**Specification**

LHCGR / LHR / LH Receptor Antibody (aa622-699) - Product Information

Application	IHC, WB
Primary Accession	P22888
Other Accession	3973
Reactivity	Human
Host	Rabbit
Clonality	Polyclonal
Isotype	IgG
Calculated MW	78643

LHCGR / LHR / LH Receptor Antibody (aa622-699) - Additional Information**Gene ID** 3973**Other Names**

LHCGR, HCG receptor, HHG, LCGR, LH/CGR, LHR, LH receptor, LHRHR, Lutropin receptor, LGR2, LH/CG-R, LSH-R, ULG5, Luteinizing hormone receptor

Target/Specificity

Human LHR / LH Receptor

Reconstitution & Storage

PBS, pH 7.0, 1% BSA, 20% glycerol, 0.01% Thimerosal. Keep as concentrated solution. Aliquot and store at -20°C or below. Avoid multiple freeze-thaw cycles.

Precautions

LHCGR / LHR / LH Receptor Antibody (aa622-699) is for research use only and not for use in diagnostic or therapeutic procedures.

LHCGR / LHR / LH Receptor Antibody (aa622-699) - Protein Information**Name** LHCGR**Synonyms** LCGR, LGR2, LHRHR**Function**Receptor for lutropin-choriogonadotropic hormone (PubMed:[11847099](http://www.uniprot.org/citations/11847099)). The activity of this receptor is mediated by G proteins which activate adenylate cyclase (PubMed:[11847099](http://www.uniprot.org/citations/11847099)).**Cellular Location**

Cell membrane; Multi-pass membrane protein

Tissue Location

Gonadal and thyroid cells.

Volume

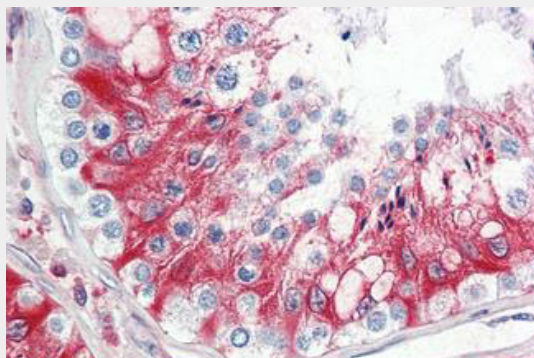
50 μ l

LHCGR / LHR / LH Receptor Antibody (aa622-699) - Protocols

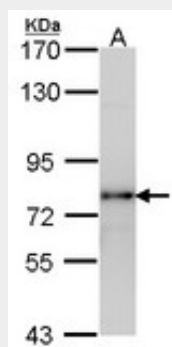
Provided below are standard protocols that you may find useful for product applications.

- [Western Blot](#)
- [Blocking Peptides](#)
- [Dot Blot](#)
- [Immunohistochemistry](#)
- [Immunofluorescence](#)
- [Immunoprecipitation](#)
- [Flow Cytometry](#)
- [Cell Culture](#)

LHCGR / LHR / LH Receptor Antibody (aa622-699) - Images



Anti-LHCGR / LHR / LH Receptor antibody IHC staining of human testis.



Sample (30 μ g of whole cell lysate).

LHCGR / LHR / LH Receptor Antibody (aa622-699) - Background

Receptor for lutropin-choriogonadotropic hormone. The activity of this receptor is mediated by G proteins which activate adenylate cyclase.

LHCGR / LHR / LH Receptor Antibody (aa622-699) - References

Minegish T., et al. Biochem. Biophys. Res. Commun. 172:1049-1054(1990).
Jia X.-C., et al. Mol. Endocrinol. 5:759-768(1991).
Frazier A.L., et al. Mol. Endocrinol. 4:1264-1276(1990).
Atger M., et al. Mol. Cell. Endocrinol. 111:113-123(1995).
Hillier L.W., et al. Nature 434:724-731(2005).