

**JCHAIN / Ig J Chain Antibody (clone 3H7)**  
**Mouse Monoclonal Antibody**  
**Catalog # ALS16557**

**Specification**

---

**JCHAIN / Ig J Chain Antibody (clone 3H7) - Product Information**

Application	IHC, WB
Primary Accession	<a href="#">P01591</a>
Other Accession	<a href="#">3512</a>
Reactivity	Human
Host	Mouse
Clonality	Monoclonal
Isotype	IgG1
Calculated MW	18099

**JCHAIN / Ig J Chain Antibody (clone 3H7) - Additional Information**

**Gene ID** 3512

**Other Names**

JCHAIN, IGCJ, Immunoglobulin J chain, IGJ, IgJ chain, JCH

**Target/Specificity**

Human IGJ

**Reconstitution & Storage**

PBS, pH 7.3, 1% BSA, 50% glycerol, 0.02% sodium azide. Store at -20°C. Minimize freezing and thawing.

**Precautions**

JCHAIN / Ig J Chain Antibody (clone 3H7) is for research use only and not for use in diagnostic or therapeutic procedures.

**JCHAIN / Ig J Chain Antibody (clone 3H7) - Protein Information**

**Name** JCHAIN ([HGNC:5713](#))

**Synonyms** IGCJ, IGJ

**Function**

Serves to link two monomer units of either IgM or IgA. In the case of IgM, the J chain-joined dimer is a nucleating unit for the IgM pentamer, and in the case of IgA it induces dimers and/or larger polymers. It also helps to bind these immunoglobulins to secretory component.

**Cellular Location**

Secreted {ECO:0000250|UniProtKB:P01592}.

**Volume**

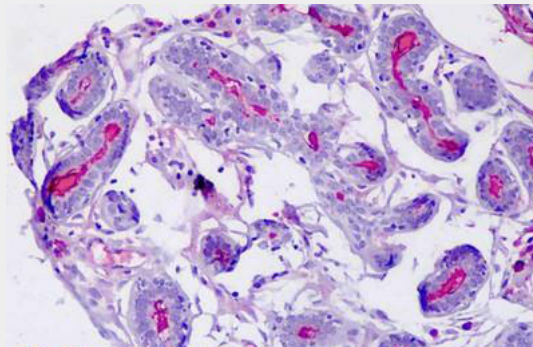
50 µl

### JCHAIN / Ig J Chain Antibody (clone 3H7) - Protocols

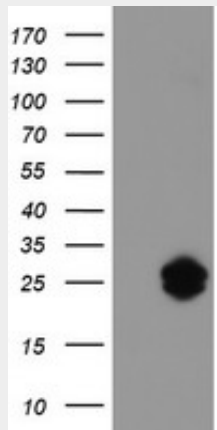
Provided below are standard protocols that you may find useful for product applications.

- [Western Blot](#)
- [Blocking Peptides](#)
- [Dot Blot](#)
- [Immunohistochemistry](#)
- [Immunofluorescence](#)
- [Immunoprecipitation](#)
- [Flow Cytometry](#)
- [Cell Culture](#)

### JCHAIN / Ig J Chain Antibody (clone 3H7) - Images



Anti-IgJ antibody IHC staining of human breast.



HEK293T cells were transfected with the pCMV6-ENTRY control (Left lane) or pCMV6-ENTRY IGJ...

### JCHAIN / Ig J Chain Antibody (clone 3H7) - Background

Serves to link two monomer units of either IgM or IgA. In the case of IgM, the J chain-jointed dimer is a nucleating unit for the IgM pentamer, and in the case of IgA it induces larger polymers. It also help to bind these immunoglobulins to secretory component.

### JCHAIN / Ig J Chain Antibody (clone 3H7) - References

Ota T.,et al.Nat. Genet. 36:40-45(2004).  
Mole J.E.,et al.Biochemistry 16:3507-3513(1977).  
Max E.E.,et al.J. Exp. Med. 161:832-849(1985).  
Frutiger S.,et al.Biochemistry 31:12643-12647(1992).  
Kristiansen T.Z.,et al.Mol. Cell. Proteomics 3:715-728(2004).