

KLKB1 / Plasma Kallikrein Antibody (aa341-390)
Rabbit Polyclonal Antibody
Catalog # ALS16554

Specification

KLKB1 / Plasma Kallikrein Antibody (aa341-390) - Product Information

Application	IHC, WB
Primary Accession	P03952
Other Accession	3818
Reactivity	Human
Host	Rabbit
Clonality	Polyclonal
Isotype	IgG
Calculated MW	71343

KLKB1 / Plasma Kallikrein Antibody (aa341-390) - Additional Information

Gene ID 3818

Other Names

KLKB1, Fletcher factor deficiency, Fletcher factor, Kininogenin, Plasma kallikrein, PKK deficiency, Plasma kallikrein heavy chain, PPK, Prekallikrein deficiency, Plasma kallikrein light chain, Plasma prekallikrein, Kallikrein 3

Target/Specificity

KLKB1 (heavy chain,Cleaved-Arg390) Antibody detects endogenous levels of fragment of activated KLKB1 resulting from cleavage adjacent to Arg390.

Reconstitution & Storage

PBS (without Mg²⁺, Ca²⁺), pH 7.4, 150 mM sodium chloride, 0.02% sodium azide, 50% glycerol. Store at -20°C for up to one year.

Precautions

KLKB1 / Plasma Kallikrein Antibody (aa341-390) is for research use only and not for use in diagnostic or therapeutic procedures.

KLKB1 / Plasma Kallikrein Antibody (aa341-390) - Protein Information

Name KLKB1

Synonyms KLK3

Function

Participates in the surface-dependent activation of blood coagulation. Activates, in a reciprocal reaction, coagulation factor XII/F12 after binding to negatively charged surfaces. Releases bradykinin from HMW kininogen and may also play a role in the renin- angiotensin system by converting prorenin into renin.

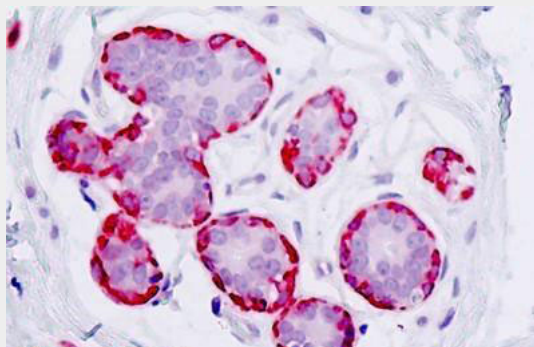
Cellular Location
Secreted.**Tissue Location**

Found in plasma (at protein level).

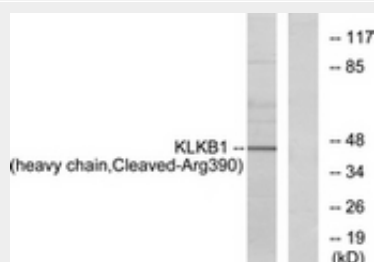
Volume50 μ l**KLKB1 / Plasma Kallikrein Antibody (aa341-390) - Protocols**

Provided below are standard protocols that you may find useful for product applications.

- [Western Blot](#)
- [Blocking Peptides](#)
- [Dot Blot](#)
- [Immunohistochemistry](#)
- [Immunofluorescence](#)
- [Immunoprecipitation](#)
- [Flow Cytometry](#)
- [Cell Culture](#)

KLKB1 / Plasma Kallikrein Antibody (aa341-390) - Images

Anti-KLKB1 / Plasma Kallikrein antibody IHC staining of human breast.



Western blot of extracts from HeLa cells, using KLKB1 (heavy chain, Cleaved-Arg390) Antibody.

KLKB1 / Plasma Kallikrein Antibody (aa341-390) - Background

The enzyme cleaves Lys-Arg and Arg-Ser bonds. It activates, in a reciprocal reaction, factor XII after its binding to a negatively charged surface. It also releases bradykinin from HMW kininogen and may also play a role in the renin-angiotensin system by converting prorenin into renin.

KLKB1 / Plasma Kallikrein Antibody (aa341-390) - References

Chung D.W.,et al.Biochemistry 25:2410-2417(1986).
Yu H.,et al.Genomics 69:225-234(2000).
Ota T.,et al.Nat. Genet. 36:40-45(2004).
Hillier L.W.,et al.Nature 434:724-731(2005).
Mural R.J.,et al.Submitted (SEP-2005) to the EMBL/GenBank/DDBJ databases.