

NCAM / CD56 Antibody (clone NKI-nbl-1)
Mouse Monoclonal Antibody
Catalog # ALS16530**Specification**

NCAM / CD56 Antibody (clone NKI-nbl-1) - Product Information

Application	IHC
Primary Accession	P13591
Other Accession	4684
Reactivity	Human
Host	Mouse
Clonality	Monoclonal
Isotype	IgG1
Calculated MW	94574

NCAM / CD56 Antibody (clone NKI-nbl-1) - Additional Information**Gene ID** 4684**Other Names**

NCAM1, CD56, CD56 antigen, MSK39, NCAM-1, N-CAM-1, NCAM

Reconstitution & Storage

PBS containing 0.09% sodium azide. Short term 4°C, long term aliquot and store at -20°C, avoid freeze thaw cycles.

Precautions

NCAM / CD56 Antibody (clone NKI-nbl-1) is for research use only and not for use in diagnostic or therapeutic procedures.

NCAM / CD56 Antibody (clone NKI-nbl-1) - Protein Information**Name** NCAM1 ([HGNC:7656](#))**Synonyms** NCAM**Function**

This protein is a cell adhesion molecule involved in neuron- neuron adhesion, neurite fasciculation, outgrowth of neurites, etc. (Microbial infection) Acts as a receptor for Zika virus.

Cellular Location

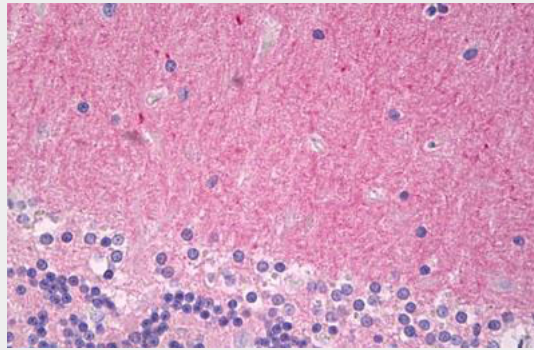
[Isoform 1]: Cell membrane; Single-pass type I membrane protein [Isoform 3]: Cell membrane; Lipid-anchor, GPI- anchor [Isoform 5]: Secreted.

NCAM / CD56 Antibody (clone NKI-nbl-1) - Protocols

Provided below are standard protocols that you may find useful for product applications.

- [Western Blot](#)
- [Blocking Peptides](#)
- [Dot Blot](#)
- [Immunohistochemistry](#)
- [Immunofluorescence](#)
- [Immunoprecipitation](#)
- [Flow Cytometry](#)
- [Cell Culture](#)

NCAM / CD56 Antibody (clone NKI-nbl-1) - Images



Anti-NCAM / CD56 antibody IHC of human brain, cerebellum.

NCAM / CD56 Antibody (clone NKI-nbl-1) - Background

This protein is a cell adhesion molecule involved in neuron-neuron adhesion, neurite fasciculation, outgrowth of neurites, etc.

NCAM / CD56 Antibody (clone NKI-nbl-1) - References

- Barton C.H., et al. *Development* 104:165-173(1988).
Lanier L.L., et al. *J. Immunol.* 146:4421-4426(1991).
Saito S., et al. *Lung Cancer* 10:307-318(1994).
Ota T., et al. *Nat. Genet.* 36:40-45(2004).
Totoki Y., et al. Submitted (MAR-2005) to the EMBL/GenBank/DDBJ databases.