

**Melanoma-Associated Antigen Antibody (clone NKI-C3)  
Mouse Monoclonal Antibody  
Catalog # ALS16524**

## Specification

---

### Melanoma-Associated Antigen Antibody (clone NKI-C3) - Product Information

Application	IHC
Reactivity	Human
Host	Mouse
Clonality	Monoclonal
Isotype	IgG1

### Melanoma-Associated Antigen Antibody (clone NKI-C3) - Additional Information

#### Target/Specificity

Used for diagnostic by staining of lysosomes/melanosomes. Directed against a predominantly intracellular protein of human melanoma cells. The antigen is abundantly present in malignant melanomas, nevocellular nevi, and neuroendocrine tumors, whereas ...

#### Reconstitution & Storage

PBS containing 0.09% sodium azide. Short term 4°C, long term aliquot and store at -20°C, avoid freeze thaw cycles. Store undiluted.

#### Precautions

Melanoma-Associated Antigen Antibody (clone NKI-C3) is for research use only and not for use in diagnostic or therapeutic procedures.

### Melanoma-Associated Antigen Antibody (clone NKI-C3) - Protein Information

#### Volume

50 µl

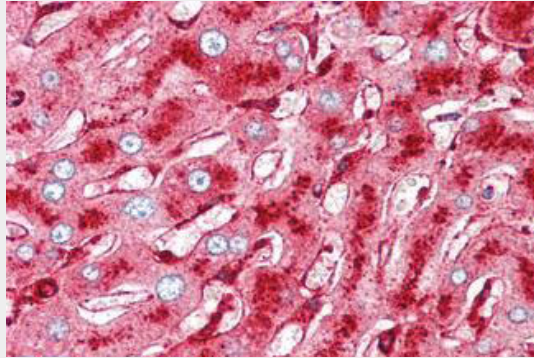
### Melanoma-Associated Antigen Antibody (clone NKI-C3) - Protocols

Provided below are standard protocols that you may find useful for product applications.

- [Western Blot](#)
- [Blocking Peptides](#)
- [Dot Blot](#)
- [Immunohistochemistry](#)
- [Immunofluorescence](#)
- [Immunoprecipitation](#)
- [Flow Cytometry](#)
- [Cell Culture](#)

### Melanoma-Associated Antigen Antibody (clone NKI-C3) - Images

---



Anti-Melanoma-Associated Antigen antibody IHC of human liver.