

CEA / Carcinoembryonic Antigen Antibody (clone PARLAM 4)
Mouse Monoclonal Antibody
Catalog # ALS16515

Specification

CEA / Carcinoembryonic Antigen Antibody (clone PARLAM 4) - Product Information

Application	IHC
Primary Accession	P06731
Reactivity	Human
Host	Mouse
Clonality	Monoclonal
Isotype	IgG1
Calculated MW	76796

CEA / Carcinoembryonic Antigen Antibody (clone PARLAM 4) - Additional Information

Gene ID 1048

Other Names

Carcinoembryonic antigen-related cell adhesion molecule 5, Carcinoembryonic antigen, CEA, Meconium antigen 100, CD66e, CEACAM5, CEA

Target/Specificity

Most polyclonal CEA antisera show cross-reactivity with related antigens such as biliary glycoprotein (BGP) and non-specific cross-reacting antigen 1/11 (NCA). Does not show cross reactivity, neither with BGP nor with NCA. In immunoblotting the antib ...

Reconstitution & Storage

PBS with 0.09% Sodium Azide. Short term 4°C, long term aliquot and store at -20°C, avoid freeze thaw cycles. Store undiluted.

Precautions

CEA / Carcinoembryonic Antigen Antibody (clone PARLAM 4) is for research use only and not for use in diagnostic or therapeutic procedures.

CEA / Carcinoembryonic Antigen Antibody (clone PARLAM 4) - Protein Information

Name CEACAM5

Synonyms CEA

Function

Cell surface glycoprotein that plays a role in cell adhesion, intracellular signaling and tumor progression (PubMed: [10864933](http://www.uniprot.org/citations/10864933), PubMed: [10910050](http://www.uniprot.org/citations/10910050), PubMed: [2803308](http://www.uniprot.org/citations/2803308)). Mediates homophilic and heterophilic cell adhesion with other carcinoembryonic antigen-related cell adhesion molecules, such as CEACAM6 (PubMed: [10864933](http://www.uniprot.org/citations/10864933))

[2803308](http://www.uniprot.org/citations/2803308)). Plays a role as an oncogene by promoting tumor progression; induces resistance to anoikis of colorectal carcinoma cells (PubMed:[10910050](http://www.uniprot.org/citations/10910050)).

Cellular Location

Cell membrane; Lipid-anchor, GPI-anchor. Apical cell membrane. Cell surface Note=Localized to the apical glycocalyx surface

Tissue Location

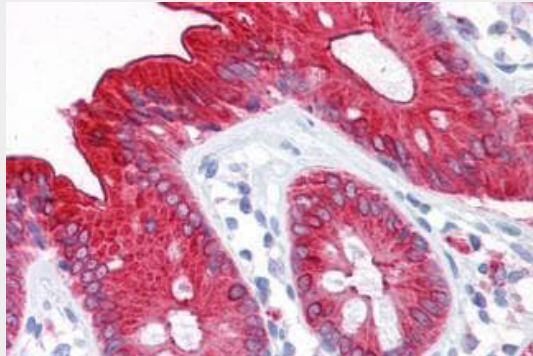
Expressed in columnar epithelial and goblet cells of the colon (at protein level) (PubMed:10436421). Found in adenocarcinomas of endodermally derived digestive system epithelium and fetal colon.

CEA / Carcinoembryonic Antigen Antibody (clone PARLAM 4) - Protocols

Provided below are standard protocols that you may find useful for product applications.

- [Western Blot](#)
- [Blocking Peptides](#)
- [Dot Blot](#)
- [Immunohistochemistry](#)
- [Immunofluorescence](#)
- [Immunoprecipitation](#)
- [Flow Cytometry](#)
- [Cell Culture](#)

CEA / Carcinoembryonic Antigen Antibody (clone PARLAM 4) - Images



Anti-CEA antibody IHC of human colon.