

NUP210 / gp210 Antibody
Rabbit Polyclonal Antibody
Catalog # ALS16476

Specification

NUP210 / gp210 Antibody - Product Information

Application	IHC
Primary Accession	Q8TEM1
Reactivity	Human
Host	Rabbit
Clonality	Polyclonal
Calculated MW	205kDa KDa

NUP210 / gp210 Antibody - Additional Information

Gene ID 23225

Other Names

Nuclear pore membrane glycoprotein 210, Nuclear pore protein gp210, Nuclear envelope pore membrane protein POM 210, POM210, Nucleoporin Nup210, Pore membrane protein of 210 kDa, NUP210, KIAA0906

Target/Specificity

Human NUP210 / gp210

Reconstitution & Storage

Aliquot and store at -20°C or -80°C. Avoid freeze-thaw cycles.

Precautions

NUP210 / gp210 Antibody is for research use only and not for use in diagnostic or therapeutic procedures.

NUP210 / gp210 Antibody - Protein Information

Name NUP210

Synonyms KIAA0906

Function

Nucleoporin essential for nuclear pore assembly and fusion, nuclear pore spacing, as well as structural integrity.

Cellular Location

Nucleus, nuclear pore complex. Nucleus membrane; Single-pass type I membrane protein. Endoplasmic reticulum membrane; Single-pass type I membrane protein

Tissue Location

Ubiquitous expression, with highest levels in lung, liver, pancreas, testis, and ovary, intermediate

levels in brain, kidney, and spleen, and lowest levels in heart and skeletal muscle

NUP210 / gp210 Antibody - Protocols

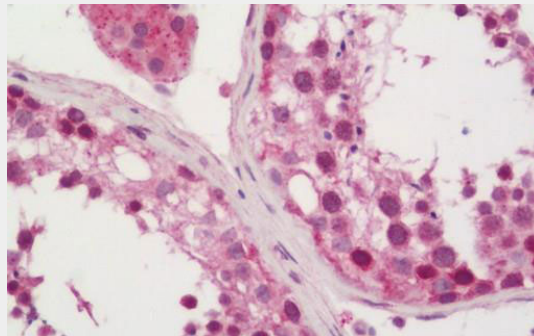
Provided below are standard protocols that you may find useful for product applications.

- [Western Blot](#)
- [Blocking Peptides](#)
- [Dot Blot](#)
- [Immunohistochemistry](#)
- [Immunofluorescence](#)
- [Immunoprecipitation](#)
- [Flow Cytometry](#)
- [Cell Culture](#)

NUP210 / gp210 Antibody - Images



Human Colon: Formalin-Fixed, Paraffin-Embedded (FFPE)



Human Testis: Formalin-Fixed, Paraffin-Embedded (FFPE)

NUP210 / gp210 Antibody - Background

Nucleoporin essential for nuclear pore assembly and fusion, nuclear pore spacing, as well as structural integrity.