

Basigin / Emmprin / CD147 Antibody (clone 10E10)
Mouse Monoclonal Antibody
Catalog # ALS16450**Specification**

Basigin / Emmprin / CD147 Antibody (clone 10E10) - Product Information

Application	IHC, WB, IF
Primary Accession	P35613
Reactivity	Human, Rat, Monkey, Dog
Host	Mouse
Clonality	Monoclonal
Calculated MW	42kDa KDa

Basigin / Emmprin / CD147 Antibody (clone 10E10) - Additional Information**Gene ID** 682**Other Names**

Basigin, 5F7, Collagenase stimulatory factor, Extracellular matrix metalloproteinase inducer, EMMPRIN, Leukocyte activation antigen M6, OK blood group antigen, Tumor cell-derived collagenase stimulatory factor, TCSF, CD147, BSG

Target/Specificity

Human Emmprin / CD147

Reconstitution & Storage

Store at -20°C. Minimize freezing and thawing.

Precautions

Basigin / Emmprin / CD147 Antibody (clone 10E10) is for research use only and not for use in diagnostic or therapeutic procedures.

Basigin / Emmprin / CD147 Antibody (clone 10E10) - Protein Information**Name** BSG ([HGNC:1116](#))**Function**

[Isoform 1]: Essential for normal retinal maturation and development (By similarity). Acts as a retinal cell surface receptor for NXNL1 and plays an important role in NXNL1-mediated survival of retinal cone photoreceptors (PubMed:<<http://www.uniprot.org/citations/25957687>>25957687). In association with glucose transporter SLC16A1/GLUT1 and NXNL1, promotes retinal cone survival by enhancing aerobic glycolysis and accelerating the entry of glucose into photoreceptors (PubMed:<<http://www.uniprot.org/citations/25957687>>25957687). May act as a potent stimulator of IL6 secretion in multiple cell lines that include monocytes (PubMed:<<http://www.uniprot.org/citations/21620857>>21620857).

Cellular Location

Melanosome. Note=Identified by mass spectrometry in melanosome fractions from stage I to stage IV. [Isoform 2]: Cell membrane; Single-pass type I membrane protein {ECO:0000250|UniProtKB:P26453}. Endosome Endoplasmic reticulum membrane; Single-pass type I membrane protein {ECO:0000250|UniProtKB:P26453} Basolateral cell membrane; Single-pass type I membrane protein {ECO:0000250|UniProtKB:P26453} [Isoform 4]: Cell membrane; Single-pass type I membrane protein {ECO:0000250|UniProtKB:P26453}

Tissue Location

[Isoform 1]: Retina-specific (PubMed:25957687). Expressed in retinal cone photoreceptors (at protein level) (PubMed:25957687). [Isoform 3]: Highly expressed in the bone marrow, fetal liver, lung, testis and thymus.

Volume

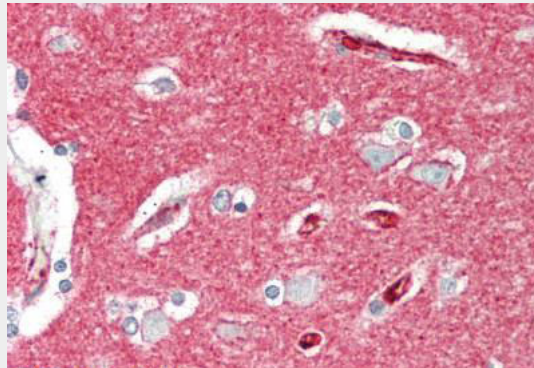
50 μ l

Basigin / Emmprin / CD147 Antibody (clone 10E10) - Protocols

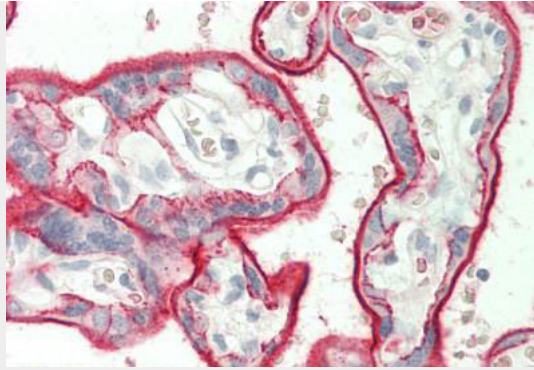
Provided below are standard protocols that you may find useful for product applications.

- [Western Blot](#)
- [Blocking Peptides](#)
- [Dot Blot](#)
- [Immunohistochemistry](#)
- [Immunofluorescence](#)
- [Immunoprecipitation](#)
- [Flow Cytometry](#)
- [Cell Culture](#)

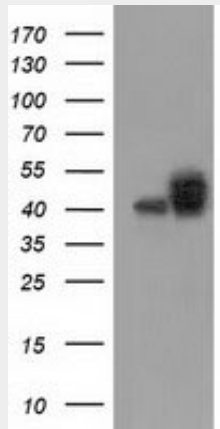
Basigin / Emmprin / CD147 Antibody (clone 10E10) - Images



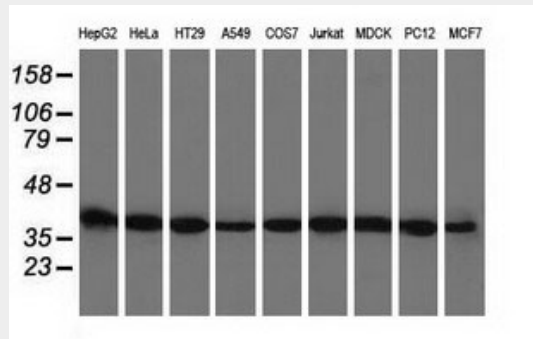
Human Brain, Cortex: Formalin-Fixed, Paraffin-Embedded (FFPE)



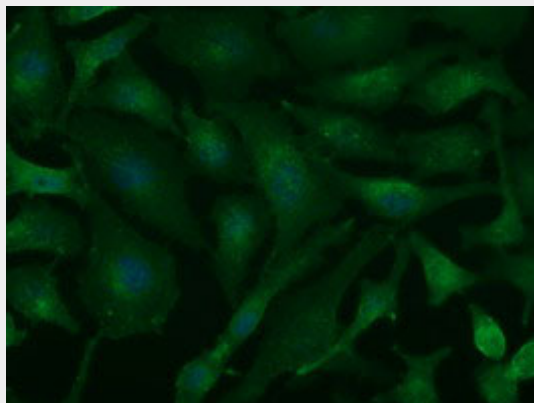
Human Placenta: Formalin-Fixed, Paraffin-Embedded (FFPE)



HEK293T cells were transfected with the pCMV6-ENTRY control (Left lane) or pCMV6-ENTRY BSG...



Western blot of extracts (35 ug) from 9 different cell lines by using anti-BSG monoclonal antibody.



Immunofluorescent staining of HeLa cells using anti-BSG mouse monoclonal antibody.

Basigin / Emmprin / CD147 Antibody (clone 10E10) - Background

Plays an important role in targeting the monocarboxylate transporters SLC16A1, SLC16A3 and SLC16A8 to the plasma membrane. Plays pivotal roles in spermatogenesis, embryo implantation, neural network formation and tumor progression. Stimulates adjacent fibroblasts to produce matrix metalloproteinases (MMPS). Seems to be a receptor for oligomannosidic glycans. In vitro, promotes outgrowth of astrocytic processes.

Basigin / Emmprin / CD147 Antibody (clone 10E10) - References

Kasinrerk W., et al. J. Immunol. 149:847-854(1992).
Miyachi T., et al. J. Biochem. 110:770-774(1991).
Biswas C., et al. Cancer Res. 55:434-439(1995).
Wakasugi H., et al. Submitted (MAR-1996) to the EMBL/GenBank/DDBJ databases.
Decastro R., et al. Submitted (MAR-1996) to the EMBL/GenBank/DDBJ databases.