

**CD20 Antibody**  
**Rabbit Polyclonal Antibody**  
**Catalog # ALS16449**

**Specification**

---

**CD20 Antibody - Product Information**

Application	IHC
Primary Accession	<a href="#">P11836</a>
Reactivity	Mouse
Host	Rabbit
Clonality	Polyclonal
Calculated MW	33kDa KDa

**CD20 Antibody - Additional Information**

Gene ID 931

**Other Names**

B-lymphocyte antigen CD20, B-lymphocyte surface antigen B1, Bp35, Leukocyte surface antigen Leu-16, Membrane-spanning 4-domains subfamily A member 1, CD20, MS4A1, CD20

**Target/Specificity**

Mouse CD20

**Reconstitution & Storage**

Aliquot and store at -20°C or -80°C. Avoid freeze-thaw cycles.

**Precautions**

CD20 Antibody is for research use only and not for use in diagnostic or therapeutic procedures.

**CD20 Antibody - Protein Information**

Name MS4A1

Synonyms CD20

**Function**

B-lymphocyte-specific membrane protein that plays a role in the regulation of cellular calcium influx necessary for the development, differentiation, and activation of B-lymphocytes (PubMed: [12920111](http://www.uniprot.org/citations/12920111), PubMed: [3925015](http://www.uniprot.org/citations/3925015), PubMed: [7684739](http://www.uniprot.org/citations/7684739)). Functions as a store-operated calcium (SOC) channel component promoting calcium influx after activation by the B-cell receptor/BCR (PubMed: [12920111](http://www.uniprot.org/citations/12920111), PubMed: [18474602](http://www.uniprot.org/citations/18474602), PubMed: [7684739](http://www.uniprot.org/citations/7684739)).

**Cellular Location**

Cell membrane; Multi-pass membrane protein. Cell membrane; Lipid-anchor. Note=Constitutively associated with membrane rafts.

**Tissue Location**

Expressed on B-cells.

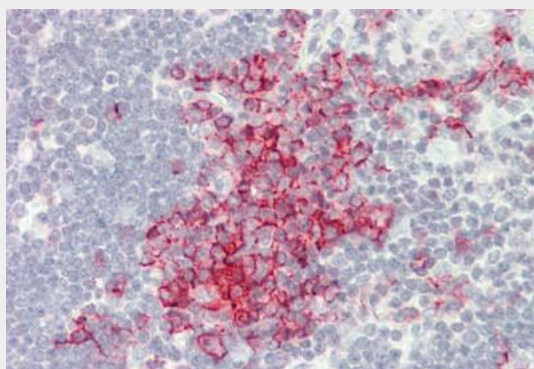
**Volume**

50  $\mu$ l

**CD20 Antibody - Protocols**

Provided below are standard protocols that you may find useful for product applications.

- [Western Blot](#)
- [Blocking Peptides](#)
- [Dot Blot](#)
- [Immunohistochemistry](#)
- [Immunofluorescence](#)
- [Immunoprecipitation](#)
- [Flow Cytometry](#)
- [Cell Culture](#)

**CD20 Antibody - Images**

Mouse Thymus: Formalin-Fixed, Paraffin-Embedded (FFPE)

**CD20 Antibody - Background**

This protein may be involved in the regulation of B-cell activation and proliferation.

**CD20 Antibody - References**

- Stamenkovic I., et al. *J. Exp. Med.* 167:1975-1980(1988).  
Tedder T.F., et al. *Proc. Natl. Acad. Sci. U.S.A.* 85:208-212(1988).  
Einfeld D.A., et al. *EMBO J.* 7:711-717(1988).  
Tedder T.F., et al. *J. Immunol.* 142:2560-2568(1989).  
Ota T., et al. *Nat. Genet.* 36:40-45(2004).