

P2RX7 / P2X7 Antibody (C-Terminus)
Rabbit Polyclonal Antibody
Catalog # ALS16429**Specification**

P2RX7 / P2X7 Antibody (C-Terminus) - Product Information

Application	IHC, IF, ICC
Primary Accession	Q99572
Reactivity	Human, Mouse
Host	Rabbit
Clonality	Polyclonal
Calculated MW	69kDa KDa

P2RX7 / P2X7 Antibody (C-Terminus) - Additional Information**Gene ID** 5027**Other Names**

P2X purinoceptor 7, P2X7, ATP receptor, P2Z receptor, Purinergic receptor, P2RX7

Target/Specificity

P2RX7 antibody is human, mouse, and rat reactive. Multiple isoforms of P2RX7 are known to exist.

Reconstitution & Storage

Long term: -20°C; Short term: +4°C. Avoid repeat freeze-thaw cycles.

Precautions

P2RX7 / P2X7 Antibody (C-Terminus) is for research use only and not for use in diagnostic or therapeutic procedures.

P2RX7 / P2X7 Antibody (C-Terminus) - Protein Information**Name** P2RX7**Function**

Receptor for ATP that acts as a ligand-gated ion channel. Responsible for ATP-dependent lysis of macrophages through the formation of membrane pores permeable to large molecules. Could function in both fast synaptic transmission and the ATP-mediated lysis of antigen-presenting cells. In the absence of its natural ligand, ATP, functions as a scavenger receptor in the recognition and engulfment of apoptotic cells (PubMed:<[a href="http://www.uniprot.org/citations/21821797" target="_blank">21821797](http://www.uniprot.org/citations/21821797)>, PubMed:<[a href="http://www.uniprot.org/citations/23303206" target="_blank">23303206](http://www.uniprot.org/citations/23303206)>).

Cellular Location

Cell membrane; Multi-pass membrane protein

Tissue Location

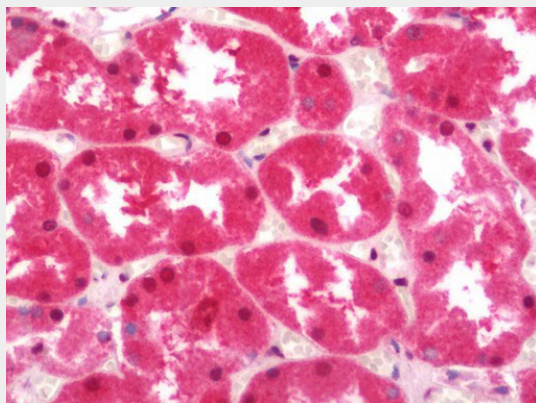
Widely expressed with highest levels in brain and immune tissues.

P2RX7 / P2X7 Antibody (C-Terminus) - Protocols

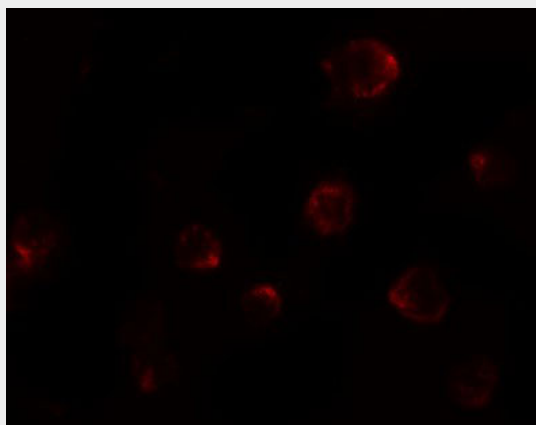
Provided below are standard protocols that you may find useful for product applications.

- [Western Blot](#)
- [Blocking Peptides](#)
- [Dot Blot](#)
- [Immunohistochemistry](#)
- [Immunofluorescence](#)
- [Immunoprecipitation](#)
- [Flow Cytometry](#)
- [Cell Culture](#)

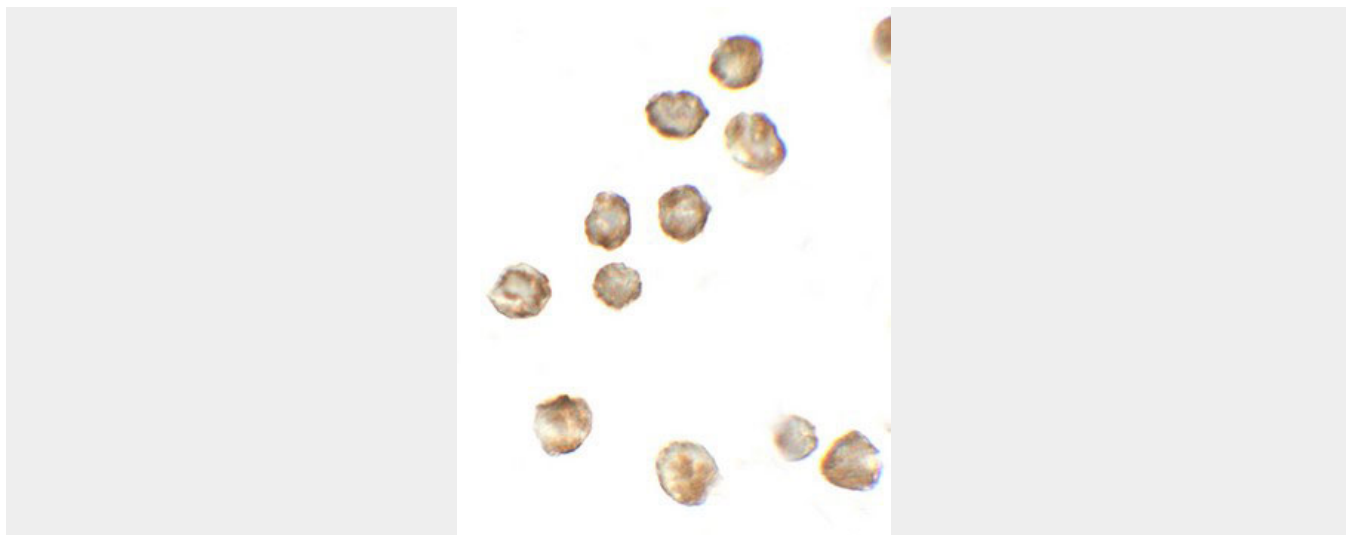
P2RX7 / P2X7 Antibody (C-Terminus) - Images



Human Kidney: Formalin-Fixed, Paraffin-Embedded (FFPE)



Immunofluorescence of P2RX7 in 3T3 cells with P2RX7 antibody at 20 ug/mL.



Immunocytochemistry of P2RX7 in 3T3 cells with P2RX7 antibody at 5 ug/mL.

P2RX7 / P2X7 Antibody (C-Terminus) - Background

Receptor for ATP that acts as a ligand-gated ion channel. Responsible for ATP-dependent lysis of macrophages through the formation of membrane pores permeable to large molecules. Could function in both fast synaptic transmission and the ATP-mediated lysis of antigen-presenting cells.

P2RX7 / P2X7 Antibody (C-Terminus) - References

Rassendren F.,et al.J. Biol. Chem. 272:5482-5486(1997).
Buell G.N.,et al.Recept. Channels 5:347-354(1998).
Cheewatrakoolpong B.,et al.Biochem. Biophys. Res. Commun. 332:17-27(2005).
Ota T.,et al.Nat. Genet. 36:40-45(2004).
Scherer S.E.,et al.Nature 440:346-351(2006).