

Cadherin Antibody (C-Terminus)
Rabbit Polyclonal Antibody
Catalog # ALS16404

Specification

Cadherin Antibody (C-Terminus) - Product Information

Application	IHC
Primary Accession	P12830
Reactivity	Human, Mouse, Rat, Chicken, Xenopus, Bovine
Host	Rabbit
Clonality	Polyclonal

Cadherin Antibody (C-Terminus) - Additional Information

Gene ID 999

Other Names

Cadherin-1, CAM 120/80, Epithelial cadherin, E-cadherin, Uvomorulin, CD324, E-Cad/CTF1, E-Cad/CTF2, E-Cad/CTF3, CDH1, CDHE, UVO

Reconstitution & Storage

Long term: -20°C; Short term: +4°C. Avoid repeat freeze-thaw cycles.

Precautions

Cadherin Antibody (C-Terminus) is for research use only and not for use in diagnostic or therapeutic procedures.

Cadherin Antibody (C-Terminus) - Protein Information

Name CDH1 ([HGNC:1748](#))

Function

Cadherins are calcium-dependent cell adhesion proteins (PubMed:11976333). They preferentially interact with themselves in a homophilic manner in connecting cells; cadherins may thus contribute to the sorting of heterogeneous cell types. CDH1 is involved in mechanisms regulating cell-cell adhesions, mobility and proliferation of epithelial cells (PubMed:11976333). Promotes organization of radial actin fiber structure and cellular response to contractile forces, via its interaction with AMOTL2 which facilitates anchoring of radial actin fibers to CDH1 junction complexes at the cell membrane (By similarity). Has a potent invasive suppressor role. It is a ligand for integrin alpha-E/beta-7.

Cellular Location

Cell junction, adherens junction. Cell membrane; Single-pass type I membrane protein Endosome. Golgi apparatus, trans-Golgi network. Cytoplasm {ECO:0000250|UniProtKB:P09803}. Cell junction, desmosome. Note=Colocalizes with DLGAP5 at sites of cell-cell contact in intestinal epithelial cells.

Anchored to actin microfilaments through association with alpha-, beta- and gamma- catenin. Sequential proteolysis induced by apoptosis or calcium influx, results in translocation from sites of cell-cell contact to the cytoplasm. Colocalizes with RAB11A endosomes during its transport from the Golgi apparatus to the plasma membrane. Recruited to desmosomes at the initial assembly phase and also accumulates progressively at mature desmosome cell-cell junctions (PubMed:25208567)

Tissue Location

Expressed in granuloma macrophages (at protein level) (PubMed:27760340). Expressed in the liver (PubMed:3263290)

Volume

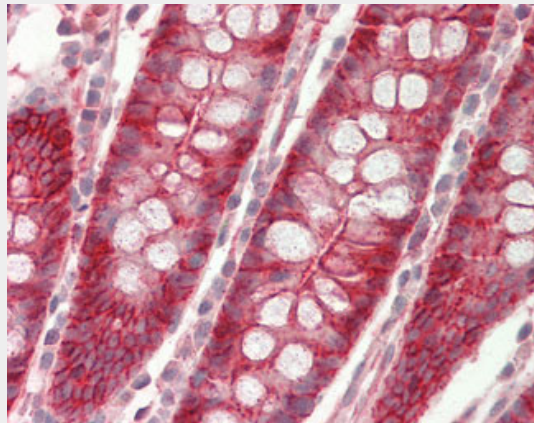
50 µl

Cadherin Antibody (C-Terminus) - Protocols

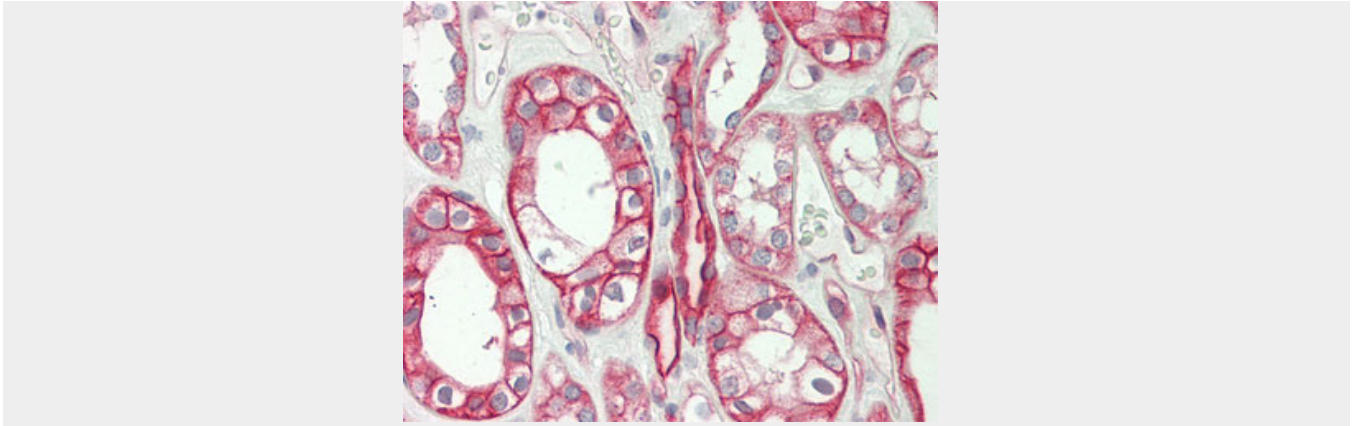
Provided below are standard protocols that you may find useful for product applications.

- [Western Blot](#)
- [Blocking Peptides](#)
- [Dot Blot](#)
- [Immunohistochemistry](#)
- [Immunofluorescence](#)
- [Immunoprecipitation](#)
- [Flow Cytometry](#)
- [Cell Culture](#)

Cadherin Antibody (C-Terminus) - Images



Human Colon: Formalin-Fixed, Paraffin-Embedded (FFPE)



Human Kidney: Formalin-Fixed, Paraffin-Embedded (FFPE)