

CD34 Antibody (clone EP88)
Rabbit Monoclonal Antibody
Catalog # ALS16393**Specification**

CD34 Antibody (clone EP88) - Product Information

Application	IHC
Primary Accession	P28906
Reactivity	Human
Host	Rabbit
Clonality	Monoclonal
Calculated MW	41kDa KDa

CD34 Antibody (clone EP88) - Additional Information**Gene ID** 947**Other Names**

Hematopoietic progenitor cell antigen CD34, CD34, CD34

Reconstitution & Storage

Store at 2-8°C

Precautions

CD34 Antibody (clone EP88) is for research use only and not for use in diagnostic or therapeutic procedures.

CD34 Antibody (clone EP88) - Protein Information**Name** CD34**Function**

Possible adhesion molecule with a role in early hematopoiesis by mediating the attachment of stem cells to the bone marrow extracellular matrix or directly to stromal cells. Could act as a scaffold for the attachment of lineage specific glycans, allowing stem cells to bind to lectins expressed by stromal cells or other marrow components. Presents carbohydrate ligands to selectins.

Cellular Location

Membrane; Single-pass type I membrane protein.

Tissue Location

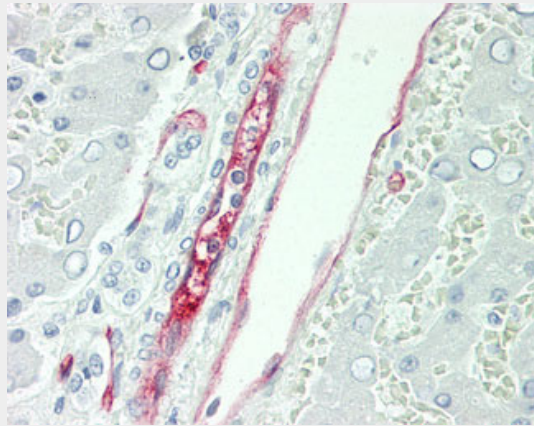
Selectively expressed on hematopoietic progenitor cells and the small vessel endothelium of a variety of tissues

CD34 Antibody (clone EP88) - Protocols

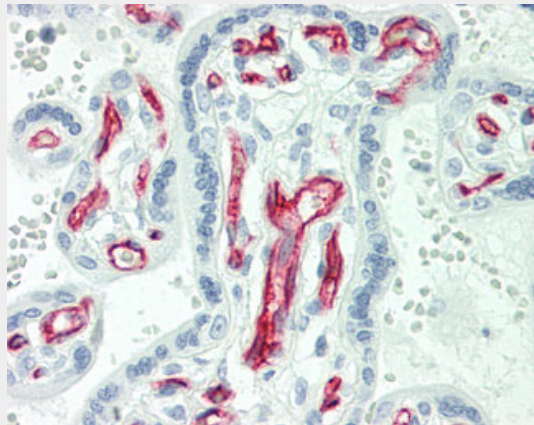
Provided below are standard protocols that you may find useful for product applications.

- [Western Blot](#)
- [Blocking Peptides](#)
- [Dot Blot](#)
- [Immunohistochemistry](#)
- [Immunofluorescence](#)
- [Immunoprecipitation](#)
- [Flow Cytometry](#)
- [Cell Culture](#)

CD34 Antibody (clone EP88) - Images



Human Liver: Formalin-Fixed, Paraffin-Embedded (FFPE)



Human Placenta: Formalin-Fixed, Paraffin-Embedded (FFPE)

CD34 Antibody (clone EP88) - Background

Possible adhesion molecule with a role in early hematopoiesis by mediating the attachment of stem cells to the bone marrow extracellular matrix or directly to stromal cells. Could act as a scaffold for the attachment of lineage specific glycans, allowing stem cells to bind to lectins expressed by stromal cells or other marrow components. Presents carbohydrate ligands to selectins.

CD34 Antibody (clone EP88) - References

Simmons D.L., et al. J. Immunol. 148:267-271(1992).
Satterthwaite A.B., et al. Genomics 12:788-794(1992).

Nakamura Y., et al. *Exp. Hematol.* 21:236-242(1993).
Freund D., et al. Submitted (JUN-2002) to the EMBL/GenBank/DDBJ databases.
Ota T., et al. *Nat. Genet.* 36:40-45(2004).