

TSPAN1 / TM4SF Antibody (aa132-227)
Rabbit Polyclonal Antibody
Catalog # ALS16389**Specification**

TSPAN1 / TM4SF Antibody (aa132-227) - Product Information

Application	WB, IHC
Primary Accession	O60635
Reactivity	Human
Host	Rabbit
Clonality	Polyclonal
Calculated MW	26kDa KDa

TSPAN1 / TM4SF Antibody (aa132-227) - Additional Information**Gene ID** 10103**Other Names**

Tetraspanin-1, Tspan-1, Tetraspan NET-1, Tetraspanin TM4-C, TSPAN1

Target/Specificity

Human TSPAN1 / TM4SF

Reconstitution & Storage

Keep as concentrated solution. Aliquot and store at -20°C or below. Avoid multiple freeze-thaw cycles.

Precautions

TSPAN1 / TM4SF Antibody (aa132-227) is for research use only and not for use in diagnostic or therapeutic procedures.

TSPAN1 / TM4SF Antibody (aa132-227) - Protein Information**Name** TSPAN1**Function**

Structural component of specialized membrane microdomains known as tetraspanin-enriched microdomains (TERMs), which act as platforms for receptor clustering and signaling. Participates thereby in diverse biological functions such as cell signal transduction, adhesion, migration and protein trafficking (PubMed: [30066932](http://www.uniprot.org/citations/30066932), PubMed: [30291375](http://www.uniprot.org/citations/30291375)). Regulates neuronal differentiation in response to NGF by facilitating NGF-mediated activation of NTRK1/TRKA receptor tyrosine kinase and subsequent downstream signaling pathways (By similarity). Plays a role in the inhibition of TNFalpha-induced apoptosis. Mechanistically, inhibits the NF-kappa-B signaling pathway by blocking phosphorylation of CHUK (PubMed: [30291375](http://www.uniprot.org/citations/30291375)). Promotes also the stability of the thiamine transporter 1/SLC19A2 in intestinal epithelial cells leading to an increase of thiamine uptake process

(PubMed:21836059).

Cellular Location

Cell membrane; Multi-pass membrane protein. Lysosome membrane; Multi- pass membrane protein

Volume

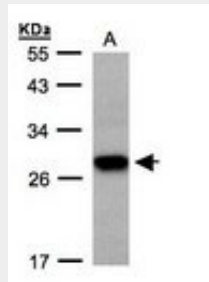
50 μ l

TSPAN1 / TM4SF Antibody (aa132-227) - Protocols

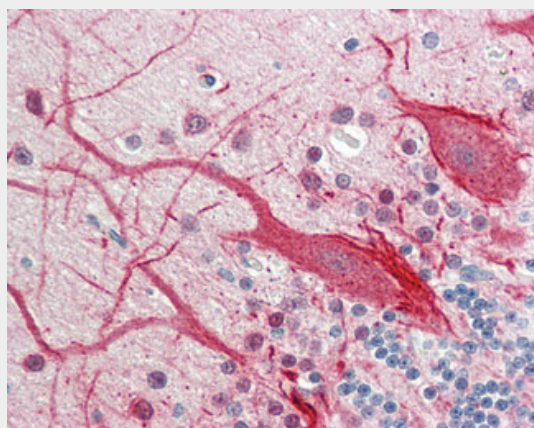
Provided below are standard protocols that you may find useful for product applications.

- [Western Blot](#)
- [Blocking Peptides](#)
- [Dot Blot](#)
- [Immunohistochemistry](#)
- [Immunofluorescence](#)
- [Immunoprecipitation](#)
- [Flow Cytometry](#)
- [Cell Culture](#)

TSPAN1 / TM4SF Antibody (aa132-227) - Images



Sample (30 μ g whole cell lysate). A: H1299. 12% SDS PAGE. TSPAN1 / TM4SF antibody diluted at 1:500



Human Brain, Cerebellum: Formalin-Fixed, Paraffin-Embedded (FFPE)

TSPAN1 / TM4SF Antibody (aa132-227) - References

Todd S.C., et al. Biochim. Biophys. Acta 1399:101-104(1998).

Rubinstein E.,et al.Submitted (MAY-1998) to the EMBL/GenBank/DDBJ databases.

Puls K.L.,et al.Submitted (MAR-1999) to the EMBL/GenBank/DDBJ databases.

Ota T.,et al.Nat. Genet. 36:40-45(2004).

Gregory S.G.,et al.Nature 441:315-321(2006).