

**ALDH1L1 Antibody (clone 2A6)**  
**Mouse Monoclonal Antibody**  
**Catalog # ALS16385**

**Specification**

---

**ALDH1L1 Antibody (clone 2A6) - Product Information**

Application	<b>WB, IHC</b>
Primary Accession	<a href="#">O75891</a>
Reactivity	<b>Human, Rat, Monkey, Dog</b>
Host	<b>Mouse</b>
Clonality	<b>Monoclonal</b>
Calculated MW	<b>99kDa KDa</b>

**ALDH1L1 Antibody (clone 2A6) - Additional Information**

**Gene ID** 10840

**Other Names**

Cytosolic 10-formyltetrahydrofolate dehydrogenase, 10-FTHFDH, FDH, 1.5.1.6, Aldehyde dehydrogenase family 1 member L1, ALDH1L1, FTHFD

**Target/Specificity**

Human ALDH1L1

**Reconstitution & Storage**

Store at -20°C. Minimize freezing and thawing.

**Precautions**

ALDH1L1 Antibody (clone 2A6) is for research use only and not for use in diagnostic or therapeutic procedures.

**ALDH1L1 Antibody (clone 2A6) - Protein Information**

**Name** ALDH1L1 ([HGNC:3978](#))

**Synonyms** FTHFD

**Function**

Cytosolic 10-formyltetrahydrofolate dehydrogenase that catalyzes the NADP(+)-dependent conversion of 10-formyltetrahydrofolate to tetrahydrofolate and carbon dioxide (PubMed:<a href="http://www.uniprot.org/citations/19933275" target="\_blank">19933275</a>, PubMed:<a href="http://www.uniprot.org/citations/21238436" target="\_blank">21238436</a>). May also have an NADP(+)-dependent aldehyde dehydrogenase activity towards formaldehyde, acetaldehyde, propionaldehyde, and benzaldehyde (By similarity).

**Cellular Location**

Cytoplasm, cytosol.

### Tissue Location

Highly expressed in liver, pancreas and kidney.

### Volume

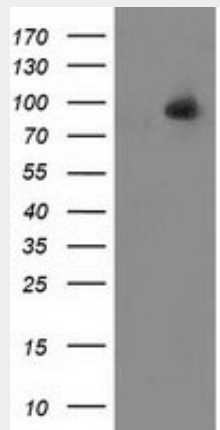
50  $\mu$ l

### ALDH1L1 Antibody (clone 2A6) - Protocols

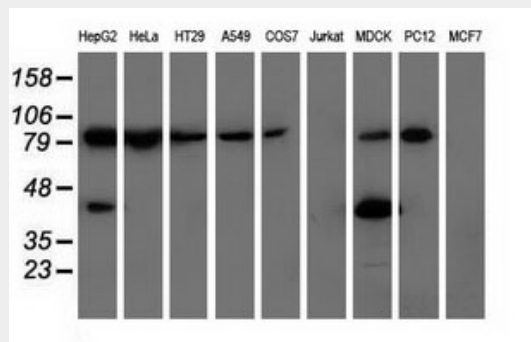
Provided below are standard protocols that you may find useful for product applications.

- [Western Blot](#)
- [Blocking Peptides](#)
- [Dot Blot](#)
- [Immunohistochemistry](#)
- [Immunofluorescence](#)
- [Immunoprecipitation](#)
- [Flow Cytometry](#)
- [Cell Culture](#)

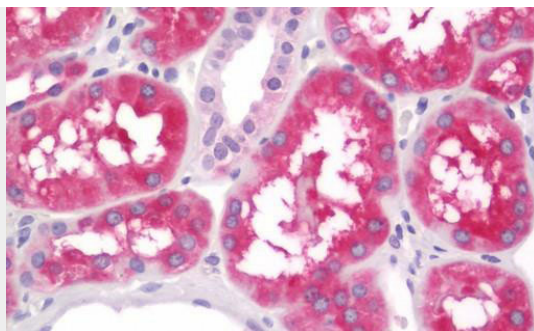
### ALDH1L1 Antibody (clone 2A6) - Images



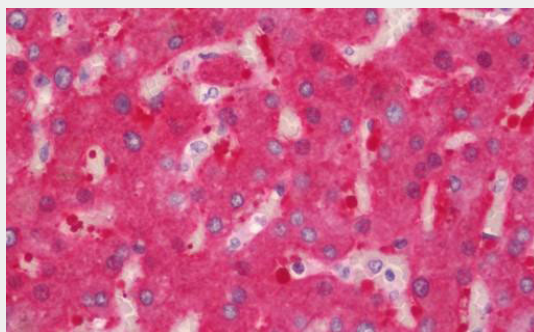
HEK293T cells were transfected with the pCMV6-ENTRY control (Left lane) or pCMV6-ENTRY ALDH1L1...



Western blot of extracts (35 ug) from 9 different cell lines by using anti-ALDH1L1 monoclonal...



Human Kidney: Formalin-Fixed, Paraffin-Embedded (FFPE)



Human Liver: Formalin-Fixed, Paraffin-Embedded (FFPE)

#### **ALDH1L1 Antibody (clone 2A6) - References**

- Hong M.H.,et al.Submitted (MAR-1998) to the EMBL/GenBank/DDBJ databases.  
Ota T.,et al.Nat. Genet. 36:40-45(2004).  
Bechtel S.,et al.BMC Genomics 8:399-399(2007).  
Muzny D.M.,et al.Nature 440:1194-1198(2006).  
Mural R.J.,et al.Submitted (SEP-2005) to the EMBL/GenBank/DDBJ databases.