

**CAPN1 / Calpain 1 Antibody (Internal)**  
**Goat Polyclonal Antibody**  
**Catalog # ALS16293****Specification**

---

**CAPN1 / Calpain 1 Antibody (Internal) - Product Information**

Application	<b>WB, IHC</b>
Primary Accession	<a href="#">P07384</a>
Reactivity	<b>Human</b>
Host	<b>Goat</b>
Clonality	<b>Polyclonal</b>
Calculated MW	<b>82kDa KDa</b>

**CAPN1 / Calpain 1 Antibody (Internal) - Additional Information****Gene ID** 823**Other Names**

Calpain-1 catalytic subunit, 3.4.22.52, Calcium-activated neutral proteinase 1, CANP 1, Calpain mu-type, Calpain-1 large subunit, Cell proliferation-inducing gene 30 protein, Micromolar-calpain, muCANP, CAPN1, CANPL1

**Target/Specificity**

Human CAPN1 / Calpain 1. Reported variants represent identical protein: NP\_001185797.1, NP\_005177.2, NP\_001185798.1.

**Reconstitution & Storage**

Store at -20°C. Minimize freezing and thawing.

**Precautions**

CAPN1 / Calpain 1 Antibody (Internal) is for research use only and not for use in diagnostic or therapeutic procedures.

**CAPN1 / Calpain 1 Antibody (Internal) - Protein Information****Name** CAPN1 ([HGNC:1476](#))**Synonyms** CANPL1**Function**

Calcium-regulated non-lysosomal thiol-protease which catalyzes limited proteolysis of substrates involved in cytoskeletal remodeling and signal transduction (PubMed:[19617626](http://www.uniprot.org/citations/19617626), PubMed:[21531719](http://www.uniprot.org/citations/21531719), PubMed:[2400579](http://www.uniprot.org/citations/2400579)). Proteolytically cleaves CTBP1 at 'Asn-375', 'Gly-387' and 'His-409' (PubMed:[23707407](http://www.uniprot.org/citations/23707407)). Cleaves and activates caspase-7 (CASP7) (PubMed:[19617626](http://www.uniprot.org/citations/19617626))

target="\_blank">19617626</a>).

#### Cellular Location

Cytoplasm. Cell membrane. Note=Translocates to the plasma membrane upon Ca(2+) binding. In granular keratinocytes and in lower corneocytes, colocalizes with FLG and FLG2 (PubMed:21531719)

#### Tissue Location

Ubiquitous.

### CAPN1 / Calpain 1 Antibody (Internal) - Protocols

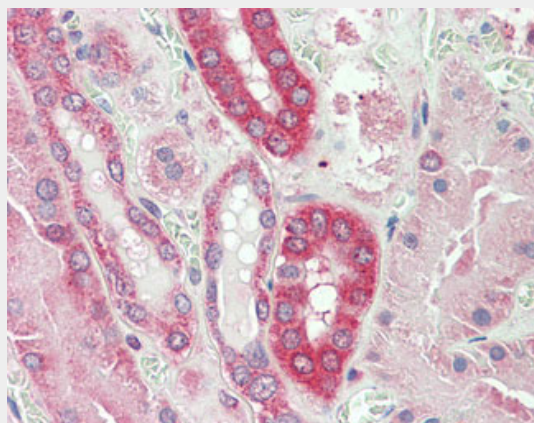
Provided below are standard protocols that you may find useful for product applications.

- [Western Blot](#)
- [Blocking Peptides](#)
- [Dot Blot](#)
- [Immunohistochemistry](#)
- [Immunofluorescence](#)
- [Immunoprecipitation](#)
- [Flow Cytometry](#)
- [Cell Culture](#)

### CAPN1 / Calpain 1 Antibody (Internal) - Images



CAPN1 antibody (0.3 ug/ml) staining of Human Spleen lysate (35 ug protein in RIPA buffer).



Anti-CAPN1 / Calpain 1 antibody IHC staining of human kidney.

### **CAPN1 / Calpain 1 Antibody (Internal) - Background**

Calcium-regulated non-lysosomal thiol-protease which catalyze limited proteolysis of substrates involved in cytoskeletal remodeling and signal transduction.

### **CAPN1 / Calpain 1 Antibody (Internal) - References**

- Aoki K.,et al.FEBS Lett. 205:313-317(1986).  
Sorimachi H.,et al.Biol. Chem. Hoppe-Seyler 371:171-176(1990).  
Kim J.W.,et al.Submitted (FEB-2004) to the EMBL/GenBank/DDBJ databases.  
Melloni E.,et al.Biochem. Biophys. Res. Commun. 229:193-197(1996).  
Michetti M.,et al.FEBS Lett. 392:11-15(1996).