

**DPP9 Antibody (clone 6A12)**  
**Mouse Monoclonal Antibody**  
**Catalog # ALS16278****Specification****DPP9 Antibody (clone 6A12) - Product Information**

Application	<b>WB, IHC</b>
Primary Accession	<a href="#">Q86T12</a>
Reactivity	<b>Human, Dog</b>
Host	<b>Mouse</b>
Clonality	<b>Monoclonal</b>
Calculated MW	<b>98kDa KDa</b>

**DPP9 Antibody (clone 6A12) - Additional Information****Gene ID** 91039**Other Names**

Dipeptidyl peptidase 9, DP9, 3.4.14.5, Dipeptidyl peptidase IV-related protein 2, DPRP-2, Dipeptidyl peptidase IX, DPP IX, Dipeptidyl peptidase-like protein 9, DPLP9, DPP9, DPRP2

**Target/Specificity**

Human DPP9

**Reconstitution & Storage**

Store at -20°C. Minimize freezing and thawing.

**Precautions**

DPP9 Antibody (clone 6A12) is for research use only and not for use in diagnostic or therapeutic procedures.

**DPP9 Antibody (clone 6A12) - Protein Information****Name** DPP9 {ECO:0000303|PubMed:12459266, ECO:0000312|HGNC:HGNC:18648}**Function**

Dipeptidyl peptidase that cleaves off N-terminal dipeptides from proteins having a Pro or Ala residue at position 2 (PubMed:<a href="http://www.uniprot.org/citations/12662155" target="\_blank">12662155</a>, PubMed:<a href="http://www.uniprot.org/citations/16475979" target="\_blank">16475979</a>, PubMed:<a href="http://www.uniprot.org/citations/19667070" target="\_blank">19667070</a>, PubMed:<a href="http://www.uniprot.org/citations/29382749" target="\_blank">29382749</a>, PubMed:<a href="http://www.uniprot.org/citations/30291141" target="\_blank">30291141</a>, PubMed:<a href="http://www.uniprot.org/citations/33731929" target="\_blank">33731929</a>, PubMed:<a href="http://www.uniprot.org/citations/36112693" target="\_blank">36112693</a>). Acts as a key inhibitor of caspase-1-dependent monocyte and macrophage pyroptosis in resting cells by preventing activation of NLRP1 and CARD8 (PubMed:<a href="http://www.uniprot.org/citations/27820798" target="\_blank">27820798</a>, PubMed:<a href="http://www.uniprot.org/citations/29967349" target="\_blank">29967349</a>, PubMed:<a

<http://www.uniprot.org/citations/30291141> target="\_blank">30291141</a>, PubMed:<a href="http://www.uniprot.org/citations/31525884" target="\_blank">31525884</a>, PubMed:<a href="http://www.uniprot.org/citations/32796818" target="\_blank">32796818</a>, PubMed:<a href="http://www.uniprot.org/citations/36112693" target="\_blank">36112693</a>, PubMed:<a href="http://www.uniprot.org/citations/36357533" target="\_blank">36357533</a>). Sequesters the cleaved C-terminal part of NLRP1 and CARD8, which respectively constitute the active part of the NLRP1 and CARD8 inflammasomes, in a ternary complex, thereby preventing their oligomerization and activation (PubMed:<a href="http://www.uniprot.org/citations/33731929" target="\_blank">33731929</a>, PubMed:<a href="http://www.uniprot.org/citations/33731932" target="\_blank">33731932</a>, PubMed:<a href="http://www.uniprot.org/citations/34019797" target="\_blank">34019797</a>). The dipeptidyl peptidase activity is required to suppress NLRP1 and CARD8; however, neither NLRP1 nor CARD8 are bona fide substrates of DPP9, suggesting the existence of substrate(s) required for NLRP1 and CARD8 inhibition (PubMed:<a href="http://www.uniprot.org/citations/33731929" target="\_blank">33731929</a>).

### Cellular Location

[Isoform 1]: Cytoplasm, cytosol

### Tissue Location

Ubiquitously expressed, with highest levels in liver, heart and muscle, and lowest levels in brain

### Volume

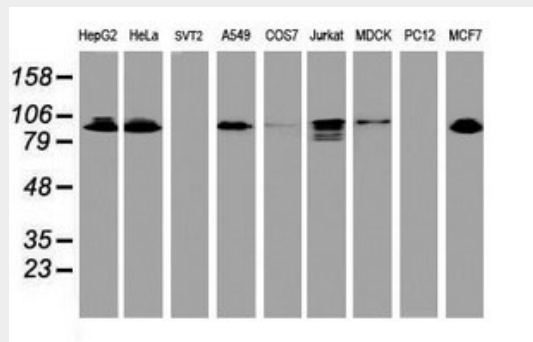
50  $\mu$ l

### DPP9 Antibody (clone 6A12) - Protocols

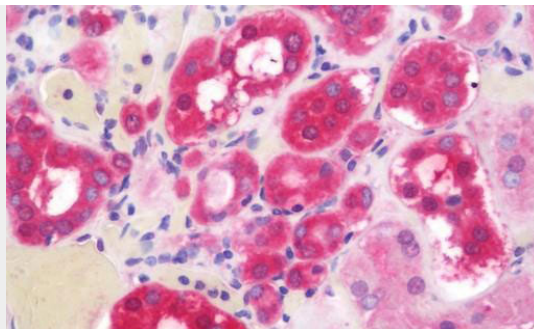
Provided below are standard protocols that you may find useful for product applications.

- [Western Blot](#)
- [Blocking Peptides](#)
- [Dot Blot](#)
- [Immunohistochemistry](#)
- [Immunofluorescence](#)
- [Immunoprecipitation](#)
- [Flow Cytometry](#)
- [Cell Culture](#)

### DPP9 Antibody (clone 6A12) - Images



Western blot of extracts (35  $\mu$ g) from 9 different cell lines by using anti-DPP9 monoclonal antibody.



Anti-DPP9 antibody IHC staining of human kidney.

### **DPP9 Antibody (clone 6A12) - Background**

Dipeptidyl peptidase that cleaves off N-terminal dipeptides from proteins having a Pro or Ala residue at position 2.

### **DPP9 Antibody (clone 6A12) - References**

- Olsen C.,et al.Gene 299:185-193(2002).
- Qi S.Y.,et al.Biochem. J. 373:179-189(2003).
- Ajami K.,et al.Biochim. Biophys. Acta 1679:18-28(2004).
- Bjelke J.R.,et al.Biochem. J. 396:391-399(2006).
- Ota T.,et al.Nat. Genet. 36:40-45(2004).