

CD20 Antibody (C-Terminus)
Goat Polyclonal Antibody
Catalog # ALS16274**Specification**

CD20 Antibody (C-Terminus) - Product Information

| | |
|-------------------|------------------------|
| Application | IHC, WB |
| Primary Accession | P11836 |
| Host | Goat |
| Clonality | Polyclonal |
| Calculated MW | 33kDa KDa |

CD20 Antibody (C-Terminus) - Additional Information**Gene ID** 931**Other Names**

B-lymphocyte antigen CD20, B-lymphocyte surface antigen B1, Bp35, Leukocyte surface antigen Leu-16, Membrane-spanning 4-domains subfamily A member 1, CD20, MS4A1, CD20

Target/Specificity

Human CD20 / MS4A1

Reconstitution & Storage

Store vial at -20 C or below prior to opening. For extended storage, aliquot contents and freeze at -20 C or below. Avoid cycles of freezing and thawing. Dilute only prior to immediate use.

Precautions

CD20 Antibody (C-Terminus) is for research use only and not for use in diagnostic or therapeutic procedures.

CD20 Antibody (C-Terminus) - Protein Information**Name** MS4A1**Synonyms** CD20**Function**

B-lymphocyte-specific membrane protein that plays a role in the regulation of cellular calcium influx necessary for the development, differentiation, and activation of B-lymphocytes (PubMed: [12920111](http://www.uniprot.org/citations/12920111), PubMed: [3925015](http://www.uniprot.org/citations/3925015), PubMed: [7684739](http://www.uniprot.org/citations/7684739)). Functions as a store-operated calcium (SOC) channel component promoting calcium influx after activation by the B-cell receptor/BCR (PubMed: [12920111](http://www.uniprot.org/citations/12920111), PubMed: [18474602](http://www.uniprot.org/citations/18474602), PubMed: [7684739](http://www.uniprot.org/citations/7684739)).

Cellular Location

Cell membrane; Multi-pass membrane protein. Cell membrane; Lipid-anchor. Note=Constitutively associated with membrane rafts.

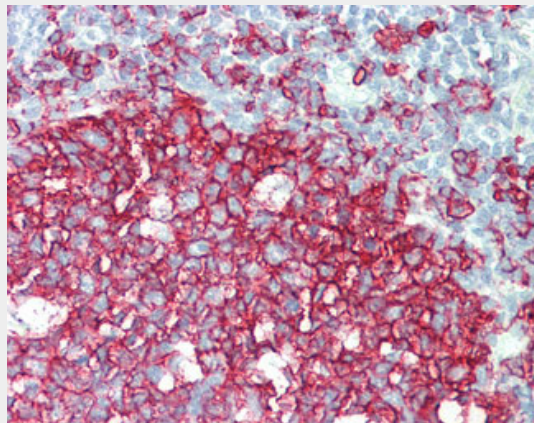
Tissue Location

Expressed on B-cells.

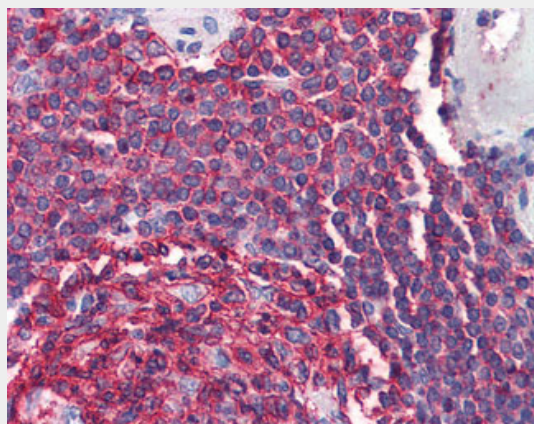
CD20 Antibody (C-Terminus) - Protocols

Provided below are standard protocols that you may find useful for product applications.

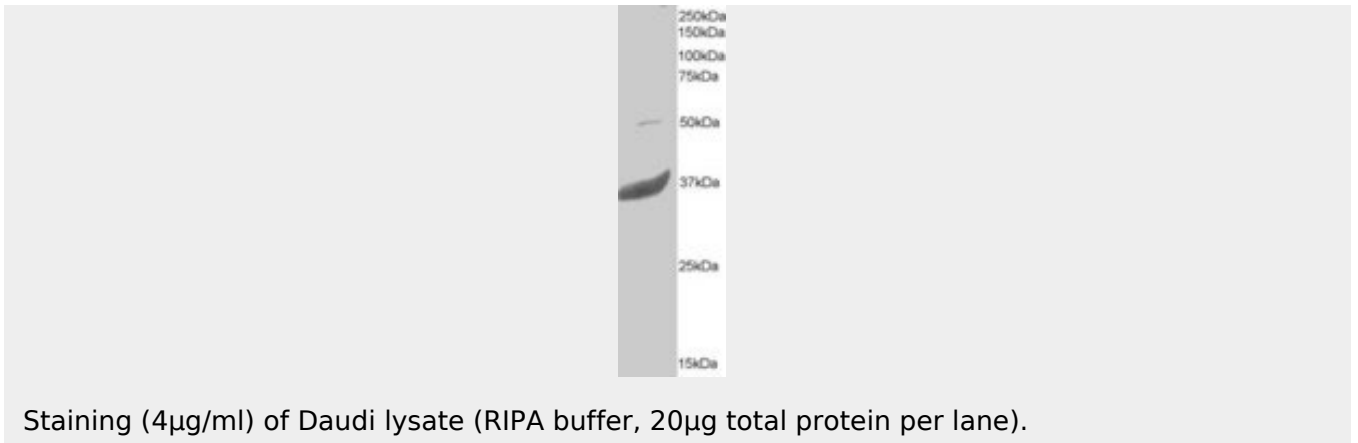
- [Western Blot](#)
- [Blocking Peptides](#)
- [Dot Blot](#)
- [Immunohistochemistry](#)
- [Immunofluorescence](#)
- [Immunoprecipitation](#)
- [Flow Cytometry](#)
- [Cell Culture](#)

CD20 Antibody (C-Terminus) - Images

Anti-CD20 antibody IHC staining of human tonsil.



Spleen: Formalin-Fixed, Paraffin-Embedded (FFPE)



CD20 Antibody (C-Terminus) - Background

This protein may be involved in the regulation of B-cell activation and proliferation.

CD20 Antibody (C-Terminus) - References

- Stamenkovic I.,et al.J. Exp. Med. 167:1975-1980(1988).
Tedder T.F.,et al.Proc. Natl. Acad. Sci. U.S.A. 85:208-212(1988).
Einfeld D.A.,et al.EMBO J. 7:711-717(1988).
Tedder T.F.,et al.J. Immunol. 142:2560-2568(1989).
Ota T.,et al.Nat. Genet. 36:40-45(2004).