

**TROP2 / TACSTD2 Antibody (aa131-180)**  
**Rabbit Polyclonal Antibody**  
**Catalog # ALS16269**

**Specification**

---

**TROP2 / TACSTD2 Antibody (aa131-180) - Product Information**

Application	<b>WB</b>
Primary Accession	<a href="#">P09758</a>
Reactivity	<b>Human, Mouse, Rat</b>
Host	<b>Rabbit</b>
Clonality	<b>Polyclonal</b>
Calculated MW	<b>36kDa KDa</b>

**TROP2 / TACSTD2 Antibody (aa131-180) - Additional Information**

**Gene ID** 4070

**Other Names**

Tumor-associated calcium signal transducer 2, Cell surface glycoprotein Trop-2, Membrane component chromosome 1 surface marker 1, Pancreatic carcinoma marker protein GA733-1, TACSTD2, GA733-1, M1S1, TROP2

**Target/Specificity**

TACD2 Antibody detects endogenous levels of total TACD2 protein.

**Reconstitution & Storage**

Store at -20°C for up to one year.

**Precautions**

TROP2 / TACSTD2 Antibody (aa131-180) is for research use only and not for use in diagnostic or therapeutic procedures.

**TROP2 / TACSTD2 Antibody (aa131-180) - Protein Information**

**Name** TACSTD2

**Synonyms** GA733-1, M1S1, TROP2

**Function**

May function as a growth factor receptor.

**Cellular Location**

Membrane; Single-pass type I membrane protein.

**Tissue Location**

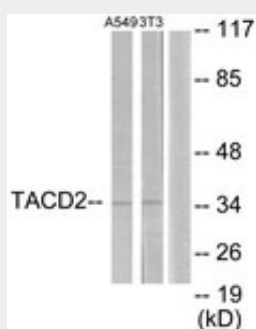
Placenta, pancreatic carcinoma cell lines.

## TROP2 / TACSTD2 Antibody (aa131-180) - Protocols

Provided below are standard protocols that you may find useful for product applications.

- [Western Blot](#)
- [Blocking Peptides](#)
- [Dot Blot](#)
- [Immunohistochemistry](#)
- [Immunofluorescence](#)
- [Immunoprecipitation](#)
- [Flow Cytometry](#)
- [Cell Culture](#)

## TROP2 / TACSTD2 Antibody (aa131-180) - Images



Western blot of extracts from A549/NIH-3T3 cells, using TACD2 Antibody.

## TROP2 / TACSTD2 Antibody (aa131-180) - Background

May function as a growth factor receptor.

## TROP2 / TACSTD2 Antibody (aa131-180) - References

- Linnenbach A.J., et al. Proc. Natl. Acad. Sci. U.S.A. 86:27-31(1989).  
Linnenbach A.J., et al. Mol. Cell. Biol. 13:1507-1515(1993).  
Fornaro M., et al. Int. J. Cancer 62:610-618(1995).  
Kalnine N., et al. Submitted (MAY-2003) to the EMBL/GenBank/DDBJ databases.  
Halleck A., et al. Submitted (JUN-2004) to the EMBL/GenBank/DDBJ databases.