

**AIF1 / IBA1 Antibody (aa85-147)**  
**Rabbit Polyclonal Antibody**  
**Catalog # ALS16267**

**Specification**

---

**AIF1 / IBA1 Antibody (aa85-147) - Product Information**

Application	<b>WB, IHC</b>
Primary Accession	<a href="#">P55008</a>
Reactivity	<b>Human, Mouse, Rat</b>
Host	<b>Rabbit</b>
Clonality	<b>Polyclonal</b>
Calculated MW	<b>17kDa KDa</b>

**AIF1 / IBA1 Antibody (aa85-147) - Additional Information**

**Gene ID** 199

**Other Names**

Allograft inflammatory factor 1, AIF-1, Ionized calcium-binding adapter molecule 1, Protein G1, AIF1, G1, IBA1

**Target/Specificity**

Human AIF1 / IBA1

**Reconstitution & Storage**

Keep as concentrated solution. Aliquot and store at -20°C or below. Avoid multiple freeze-thaw cycles.

**Precautions**

AIF1 / IBA1 Antibody (aa85-147) is for research use only and not for use in diagnostic or therapeutic procedures.

**AIF1 / IBA1 Antibody (aa85-147) - Protein Information**

**Name** AIF1

**Synonyms** G1, IBA1

**Function**

Actin-binding protein that enhances membrane ruffling and RAC activation. Enhances the actin-bundling activity of LCP1. Binds calcium. Plays a role in RAC signaling and in phagocytosis. May play a role in macrophage activation and function. Promotes the proliferation of vascular smooth muscle cells and of T-lymphocytes. Enhances lymphocyte migration. Plays a role in vascular inflammation.

**Cellular Location**

Cytoplasm, cytoskeleton {ECO:0000250|UniProtKB:O70200}. Cell projection, ruffle membrane {ECO:0000250|UniProtKB:O70200}; Peripheral membrane protein

{ECO:0000250|UniProtKB:O70200}; Cytoplasmic side {ECO:0000250|UniProtKB:O70200}. Cell projection, phagocytic cup {ECO:0000250|UniProtKB:O70200}. Note=Associated with the actin cytoskeleton at membrane ruffles and at sites of phagocytosis {ECO:0000250|UniProtKB:O70200}

#### Tissue Location

Detected in T-lymphocytes and peripheral blood mononuclear cells.

#### Volume

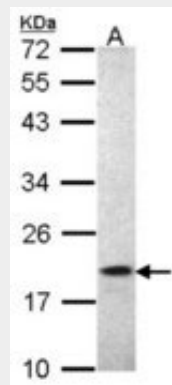
50  $\mu$ l

#### AIF1 / IBA1 Antibody (aa85-147) - Protocols

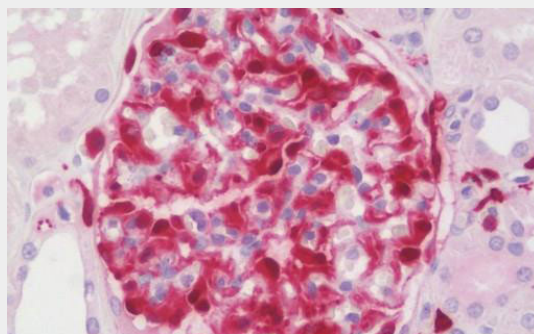
Provided below are standard protocols that you may find useful for product applications.

- [Western Blot](#)
- [Blocking Peptides](#)
- [Dot Blot](#)
- [Immunohistochemistry](#)
- [Immunofluorescence](#)
- [Immunoprecipitation](#)
- [Flow Cytometry](#)
- [Cell Culture](#)

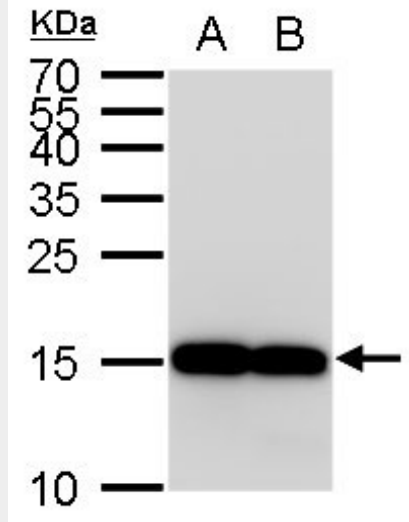
#### AIF1 / IBA1 Antibody (aa85-147) - Images



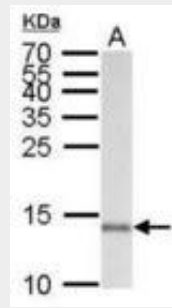
Sample (30  $\mu$ g of whole cell lysate).



Anti-AIF1 / IBA1 antibody IHC staining of human kidney.



A: 30 µg THP-1 whole cell lysate/extract.



A: 50 µg mouse brain lysate/extract. 15 % SDS-PAGE. AIF1 / IBA1 antibody diluted at 1:1000.

**AIF1 / IBA1 Antibody (aa85-147) - Background**

Actin-binding protein that enhances membrane ruffling and RAC activation. Enhances the actin-bundling activity of LCP1. Binds calcium. Plays a role in RAC signaling and in phagocytosis. May play a role in macrophage activation and function. Promotes the proliferation of vascular smooth muscle cells and of T- lymphocytes. Enhances lymphocyte migration. Plays a role in vascular inflammation.

**AIF1 / IBA1 Antibody (aa85-147) - References**

Albertella M.R.,et al.Hum. Mol. Genet. 3:793-799(1994).  
 Holzinger I.,et al.Immunogenetics 42:315-322(1995).  
 Autieri M.V.,et al.Biochem. Biophys. Res. Commun. 228:29-37(1996).  
 Utans U.,et al.Transplantation 61:1387-1392(1996).  
 de Baey A.,et al.Genomics 45:591-600(1997).