

**CD32A Antibody (clone 13D7)**  
**Mouse Monoclonal Antibody**  
**Catalog # ALS16265****Specification**

---

**CD32A Antibody (clone 13D7) - Product Information**

Application	IHC, WB, IF
Primary Accession	<a href="#">P12318</a>
Reactivity	Human
Host	Mouse
Clonality	Monoclonal
Calculated MW	35kDa KDa

**CD32A Antibody (clone 13D7) - Additional Information****Gene ID** 2212**Other Names**

Low affinity immunoglobulin gamma Fc region receptor II-a, IgG Fc receptor II-a, CDw32, Fc-gamma RII-a, Fc-gamma-RIIa, FcRII-a, CD32, FCGR2A, CD32, FCG2, FCGR2A1, IGFR2

**Target/Specificity**

Human CD32A / CD32

**Reconstitution & Storage**

Store at -20°C. Minimize freezing and thawing.

**Precautions**

CD32A Antibody (clone 13D7) is for research use only and not for use in diagnostic or therapeutic procedures.

**CD32A Antibody (clone 13D7) - Protein Information****Name** FCGR2A**Synonyms** CD32, FCG2, FCGR2A1, IGFR2**Function**

Binds to the Fc region of immunoglobulins gamma. Low affinity receptor. By binding to IgG it initiates cellular responses against pathogens and soluble antigens. Promotes phagocytosis of opsonized antigens.

**Cellular Location**

Cell membrane; Single-pass type I membrane protein

**Tissue Location**

Found on monocytes, neutrophils and eosinophil platelets

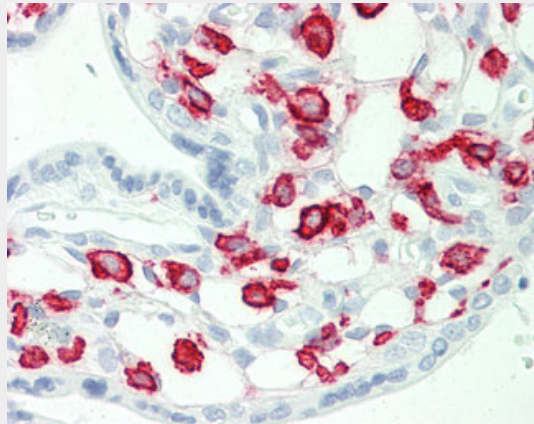
**Volume**  
50  $\mu$ l

### **CD32A Antibody (clone 13D7) - Protocols**

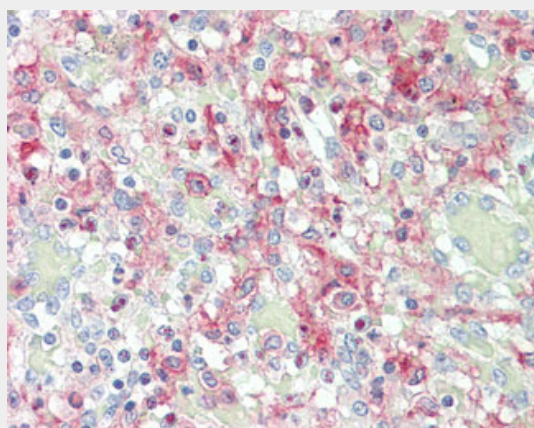
Provided below are standard protocols that you may find useful for product applications.

- [Western Blot](#)
- [Blocking Peptides](#)
- [Dot Blot](#)
- [Immunohistochemistry](#)
- [Immunofluorescence](#)
- [Immunoprecipitation](#)
- [Flow Cytometry](#)
- [Cell Culture](#)

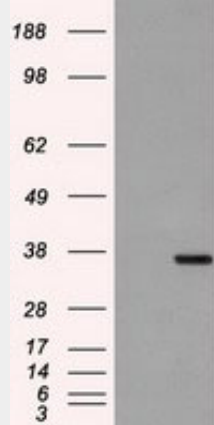
### **CD32A Antibody (clone 13D7) - Images**



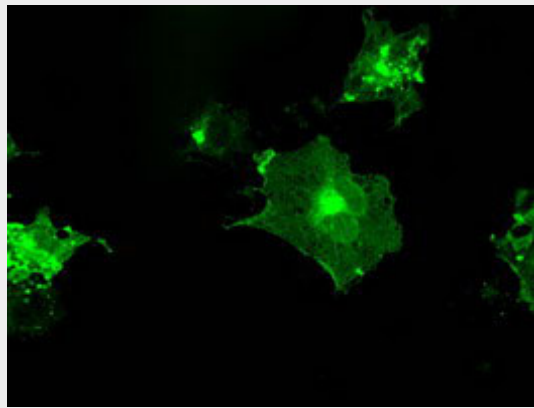
Anti-CD32A antibody IHC staining of human placenta.



Anti-CD32A antibody IHC staining of human spleen.



HEK293T cells were transfected with the pCMV6-ENTRY control (Left lane) or pCMV6-ENTRY FCGR2A...



Anti-FCGR2A mouse monoclonal antibody immunofluorescent staining of COS7 cells transiently...

### **CD32A Antibody (clone 13D7) - Background**

Binds to the Fc region of immunoglobulins gamma. Low affinity receptor. By binding to IgG it initiates cellular responses against pathogens and soluble antigens. Promotes phagocytosis of opsonized antigens.

### **CD32A Antibody (clone 13D7) - References**

- Stuart S.G., et al. J. Exp. Med. 166:1668-1684(1987).
- Brooks D.G., et al. J. Exp. Med. 170:1369-1385(1989).
- Gregory S.G., et al. Nature 441:315-321(2006).
- Hibbs M.L., et al. Proc. Natl. Acad. Sci. U.S.A. 85:2240-2244(1988).
- Stengelin S., et al. EMBO J. 7:1053-1059(1988).