

**CTHRC1 Antibody (clone 1G12)**  
**Mouse Monoclonal Antibody**  
**Catalog # ALS16246**

**Specification**

---

**CTHRC1 Antibody (clone 1G12) - Product Information**

Application	<b>IHC, WB</b>
Primary Accession	<a href="#">O96CG8</a>
Reactivity	<b>Human</b>
Host	<b>Mouse</b>
Clonality	<b>Monoclonal</b>
Calculated MW	<b>26kDa KDa</b>

**CTHRC1 Antibody (clone 1G12) - Additional Information**

**Gene ID** 115908

**Other Names**

Collagen triple helix repeat-containing protein 1, Protein NMTC1, CTHRC1

**Target/Specificity**

Human CTHRC1

**Reconstitution & Storage**

Store at -20°C or lower. Aliquot to avoid repeated freezing and thawing.

**Precautions**

CTHRC1 Antibody (clone 1G12) is for research use only and not for use in diagnostic or therapeutic procedures.

**CTHRC1 Antibody (clone 1G12) - Protein Information**

**Name** CTHRC1

**Function**

May act as a negative regulator of collagen matrix deposition.

**Cellular Location**

Secreted, extracellular space, extracellular matrix

**Tissue Location**

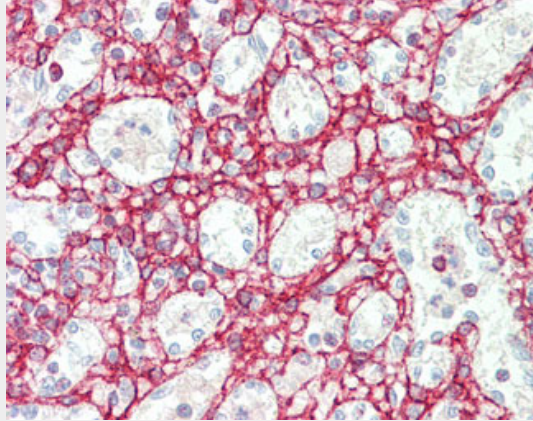
Isoform 1 is expressed in calcified atherosclerotic plaque and chondrocyte-like cells.

**CTHRC1 Antibody (clone 1G12) - Protocols**

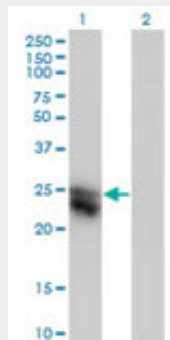
Provided below are standard protocols that you may find useful for product applications.

- [Western Blot](#)
- [Blocking Peptides](#)
- [Dot Blot](#)
- [Immunohistochemistry](#)
- [Immunofluorescence](#)
- [Immunoprecipitation](#)
- [Flow Cytometry](#)
- [Cell Culture](#)

### CTHRC1 Antibody (clone 1G12) - Images



Anti-CTHRC1 antibody IHC staining of human spleen.



Western blot of CTHRC1 expression in transfected 293T cell line by CTHRC1 monoclonal antibody...

### CTHRC1 Antibody (clone 1G12) - Background

May act as a negative regulator of collagen matrix deposition.

### CTHRC1 Antibody (clone 1G12) - References

- Pyagay P., et al. *Circ. Res.* 96:261-268(2005).  
Sanuki N., et al. Submitted (JUN-2001) to the EMBL/GenBank/DDBJ databases.  
Clark H.F., et al. *Genome Res.* 13:2265-2270(2003).  
Nusbaum C., et al. *Nature* 439:331-335(2006).  
Mural R.J., et al. Submitted (JUL-2005) to the EMBL/GenBank/DDBJ databases.