

FH / Fumarase / MCL Antibody (aa89-365)
Rabbit Polyclonal Antibody
Catalog # ALS16204

Specification

FH / Fumarase / MCL Antibody (aa89-365) - Product Information

Application	WB, ICC, IHC
Primary Accession	P07954
Reactivity	Human, Mouse, Rat
Host	Rabbit
Clonality	Polyclonal
Calculated MW	55kDa KDa

FH / Fumarase / MCL Antibody (aa89-365) - Additional Information

Gene ID 2271

Other Names

Fumarate hydratase, mitochondrial, Fumarase, 4.2.1.2, FH

Target/Specificity

Human FH / Fumarase

Reconstitution & Storage

Keep as concentrated solution. Aliquot and store at -20°C or below. Avoid multiple freeze-thaw cycles.

Precautions

FH / Fumarase / MCL Antibody (aa89-365) is for research use only and not for use in diagnostic or therapeutic procedures.

FH / Fumarase / MCL Antibody (aa89-365) - Protein Information

Name FH {ECO:0000303|PubMed:27037871, ECO:0000312|HGNC:HGNC:3700}

Function

Catalyzes the reversible stereospecific interconversion of fumarate to L-malate (PubMed:30761759). Experiments in other species have demonstrated that specific isoforms of this protein act in defined pathways and favor one direction over the other (Probable).

Cellular Location

[Isoform Mitochondrial]: Mitochondrion

Tissue Location

Expressed in red blood cells; underexpressed in red blood cells (cytoplasm) of patients with hereditary non-spherocytic hemolytic anemia of unknown etiology.

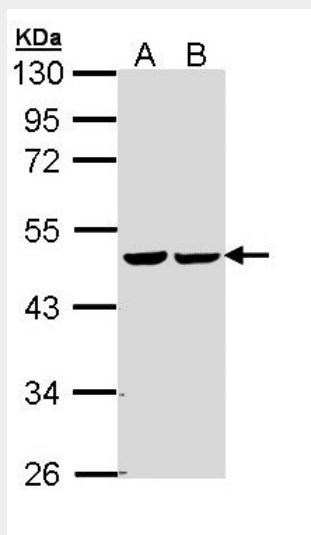
Volume
50 μ l

FH / Fumarase / MCL Antibody (aa89-365) - Protocols

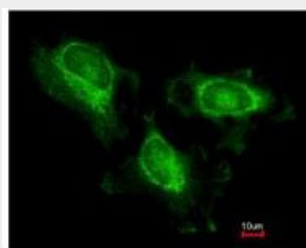
Provided below are standard protocols that you may find useful for product applications.

- [Western Blot](#)
- [Blocking Peptides](#)
- [Dot Blot](#)
- [Immunohistochemistry](#)
- [Immunofluorescence](#)
- [Immunoprecipitation](#)
- [Flow Cytometry](#)
- [Cell Culture](#)

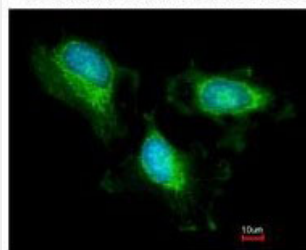
FH / Fumarase / MCL Antibody (aa89-365) - Images



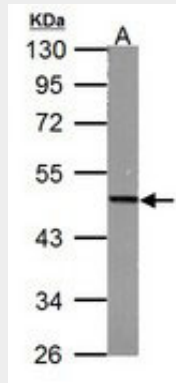
Sample (30 μ g of whole cell lysate).



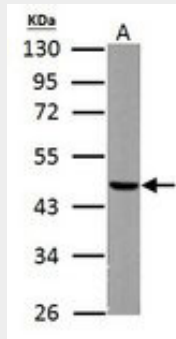
Costained with Hoechst 33342



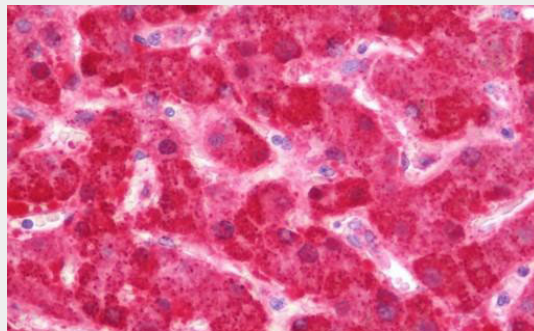
Immunofluorescence of methanol-fixed HeLa using Fumarate hydratase antibody at 1:200 dilution.



Fumarate hydratase antibody [N2C2], Internal detects FH protein by Western blot analysis.



Fumarate hydratase antibody [N2C2], Internal detects Fumarate hydratase protein by Western blot...



Anti-FH / Fumarase / MCL antibody IHC staining of human liver.

FH / Fumarase / MCL Antibody (aa89-365) - Background

Also acts as a tumor suppressor.

FH / Fumarase / MCL Antibody (aa89-365) - References

- Gellera C., et al. Submitted (MAY-1996) to the EMBL/GenBank/DDBJ databases.
- Bourgeron T., et al. Submitted (FEB-1996) to the EMBL/GenBank/DDBJ databases.
- Kalnine N., et al. Submitted (AUG-2003) to the EMBL/GenBank/DDBJ databases.
- Ota T., et al. Nat. Genet. 36:40-45(2004).
- Mural R.J., et al. Submitted (JUL-2005) to the EMBL/GenBank/DDBJ databases.