

LMNB1 / Lamin B1 Antibody (aa289-574)
Rabbit Polyclonal Antibody
Catalog # ALS16195**Specification**

LMNB1 / Lamin B1 Antibody (aa289-574) - Product Information

Application	WB, IHC
Primary Accession	P20700
Reactivity	Human
Host	Rabbit
Clonality	Polyclonal
Calculated MW	66kDa KDa

LMNB1 / Lamin B1 Antibody (aa289-574) - Additional Information**Gene ID** 4001**Other Names**

Lamin-B1, LMNB1, LMN2, LMNB

Target/Specificity

Human Lamin B1

Reconstitution & Storage

Keep as concentrated solution. Aliquot and store at -20°C or below. Avoid multiple freeze-thaw cycles.

Precautions

LMNB1 / Lamin B1 Antibody (aa289-574) is for research use only and not for use in diagnostic or therapeutic procedures.

LMNB1 / Lamin B1 Antibody (aa289-574) - Protein Information**Name** LMNB1**Synonyms** LMN2, LMNB**Function**

Lamins are intermediate filament proteins that assemble into a filamentous meshwork, and which constitute the major components of the nuclear lamina, a fibrous layer on the nucleoplasmic side of the inner nuclear membrane (PubMed: [28716252](http://www.uniprot.org/citations/28716252), PubMed: [32910914](http://www.uniprot.org/citations/32910914)). Lamins provide a framework for the nuclear envelope, bridging the nuclear envelope and chromatin, thereby playing an important role in nuclear assembly, chromatin organization, nuclear membrane and telomere dynamics (PubMed: [28716252](http://www.uniprot.org/citations/28716252), PubMed: [32910914](http://www.uniprot.org/citations/32910914)). The structural integrity of the lamina is strictly controlled by the cell cycle, as seen by the

disintegration and formation of the nuclear envelope in prophase and telophase, respectively (PubMed:28716252, PubMed:32910914).

Cellular Location

Nucleus lamina

Volume

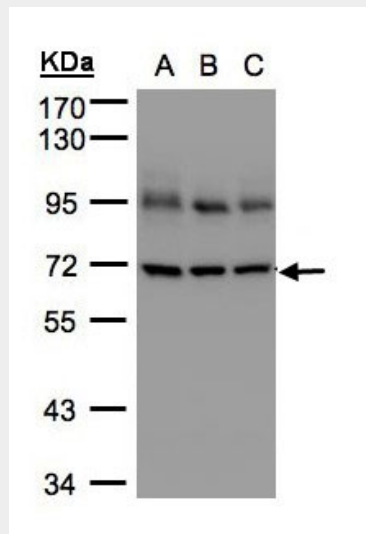
50 μ l

LMNB1 / Lamin B1 Antibody (aa289-574) - Protocols

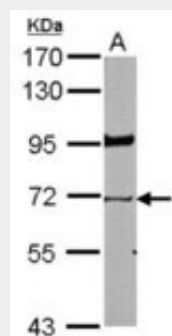
Provided below are standard protocols that you may find useful for product applications.

- [Western Blot](#)
- [Blocking Peptides](#)
- [Dot Blot](#)
- [Immunohistochemistry](#)
- [Immunofluorescence](#)
- [Immunoprecipitation](#)
- [Flow Cytometry](#)
- [Cell Culture](#)

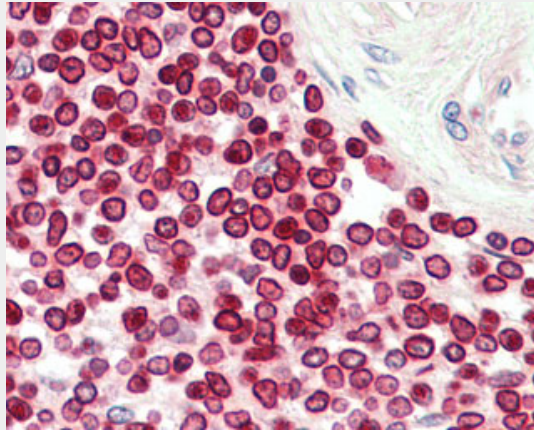
LMNB1 / Lamin B1 Antibody (aa289-574) - Images



Sample (30 ug whole cell lysate).



Sample (30 ug of whole cell lysate). A: NIH-3T3. 7.5% SDS PAGE. Lamin B1 antibody diluted at 1:5000.



Anti-LMN1 / Lamin B1 antibody IHC staining of human spleen.

LMNB1 / Lamin B1 Antibody (aa289-574) - Background

Lamins are components of the nuclear lamina, a fibrous layer on the nucleoplasmic side of the inner nuclear membrane, which is thought to provide a framework for the nuclear envelope and may also interact with chromatin.

LMNB1 / Lamin B1 Antibody (aa289-574) - References

- Pollard K.M., et al. Mol. Cell. Biol. 10:2164-2175(1990).
- Lin F., et al. Genomics 27:230-236(1995).
- Ota T., et al. Nat. Genet. 36:40-45(2004).
- Mural R.J., et al. Submitted (SEP-2005) to the EMBL/GenBank/DDBJ databases.
- Bienvenut W.V., et al. Submitted (DEC-2008) to UniProtKB.